



## Changing Places Product Schedule

## Changing Places Overview

CHS Healthcare is a leader in the health care industry, providing quality and innovative patient transfer solutions and hygiene systems to the Australian market. At CHS Healthcare we go above and beyond to ensure that the best outcomes are achieved in a simple, concise and cost effective way.

We understand the market and have produced this schedule to help designers, planners and the construction industry navigate the complex Changing Places design and construct process. CHS Healthcare is proud to have been involved in the Changing Places initiative since its introduction to Australia in 2012. We are actively involved on a national level, supplying and installing equipment in every state of Australia, and have been involved in more than 70%\* of all accredited facilities.. Our expertise in this field is valued by clients and Changing Places alike, resulting in CHS Healthcare being crowned 'Industry Champions'.

We look forward to helping you out on your Changing Places project in anyway possible. Even if we don't have access to what you need we have key relationships with numerous associated suppliers, architects, access consultants and other valuable contacts to make your job simpler.

Kind Regards,

Andre Jensen | Project Consultant  
P: 1300 789 420 | M: 0448 741 367  
E: [andre@chshealthcare.com.au](mailto:andre@chshealthcare.com.au) | W: [www.chshealthcare.com.au](http://www.chshealthcare.com.au)

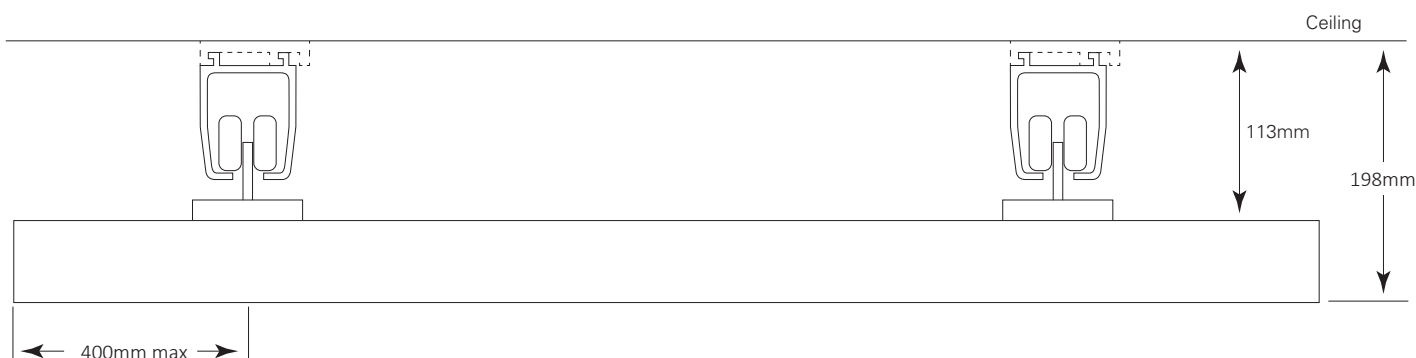
Signature: \_\_\_\_\_



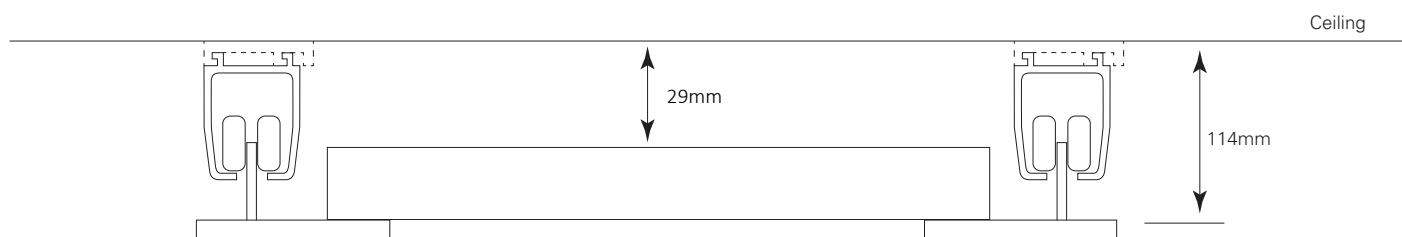
Correct at time of writing 1/08/2019

## Changing Places Hoist Ceiling Clearances

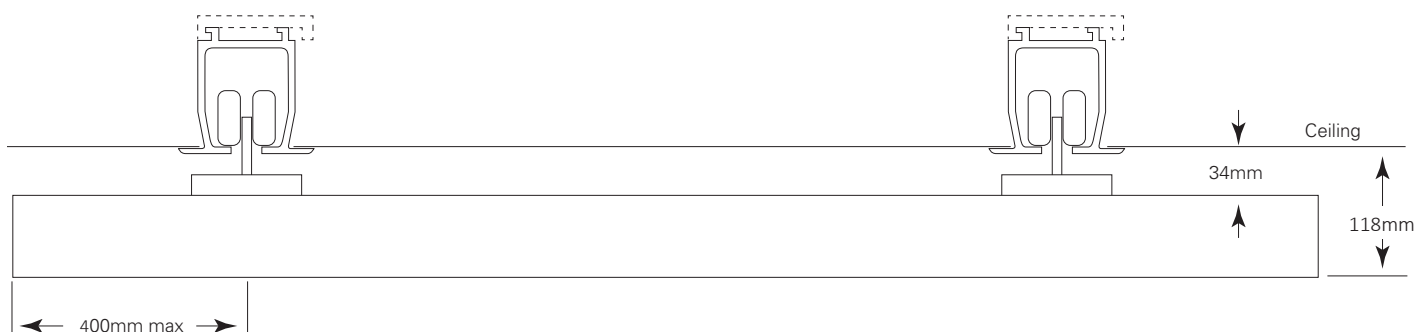
### A. SUPA RAIL PARALLEL RAIL AND SUPA RAIL TRAVERSE RAIL - XY TROLLEY MANUAL STANDARD



### B. SUPA RAIL PARALLEL RAIL AND SUPA RAIL TRAVERSE RAIL - XY TROLLEY ABOVE MOUNT

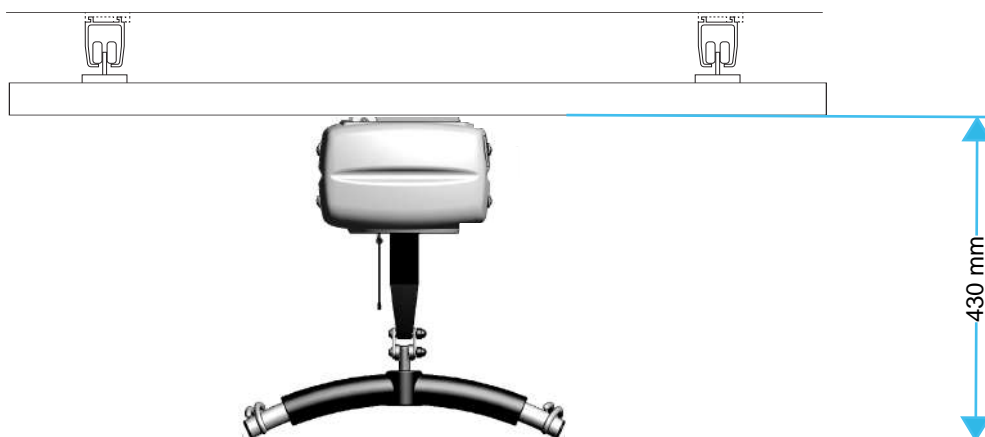


### C. FINELINE (CONCEALED) PARALLEL RAIL AND SUPA RAIL TRAVERSE RAIL - XY TROLLEY MANUAL STANDARD

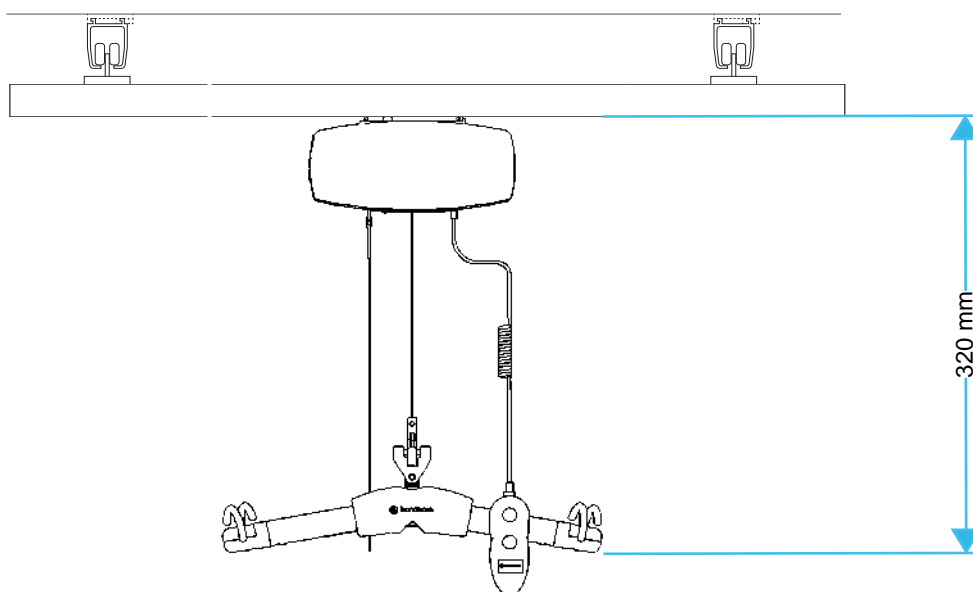


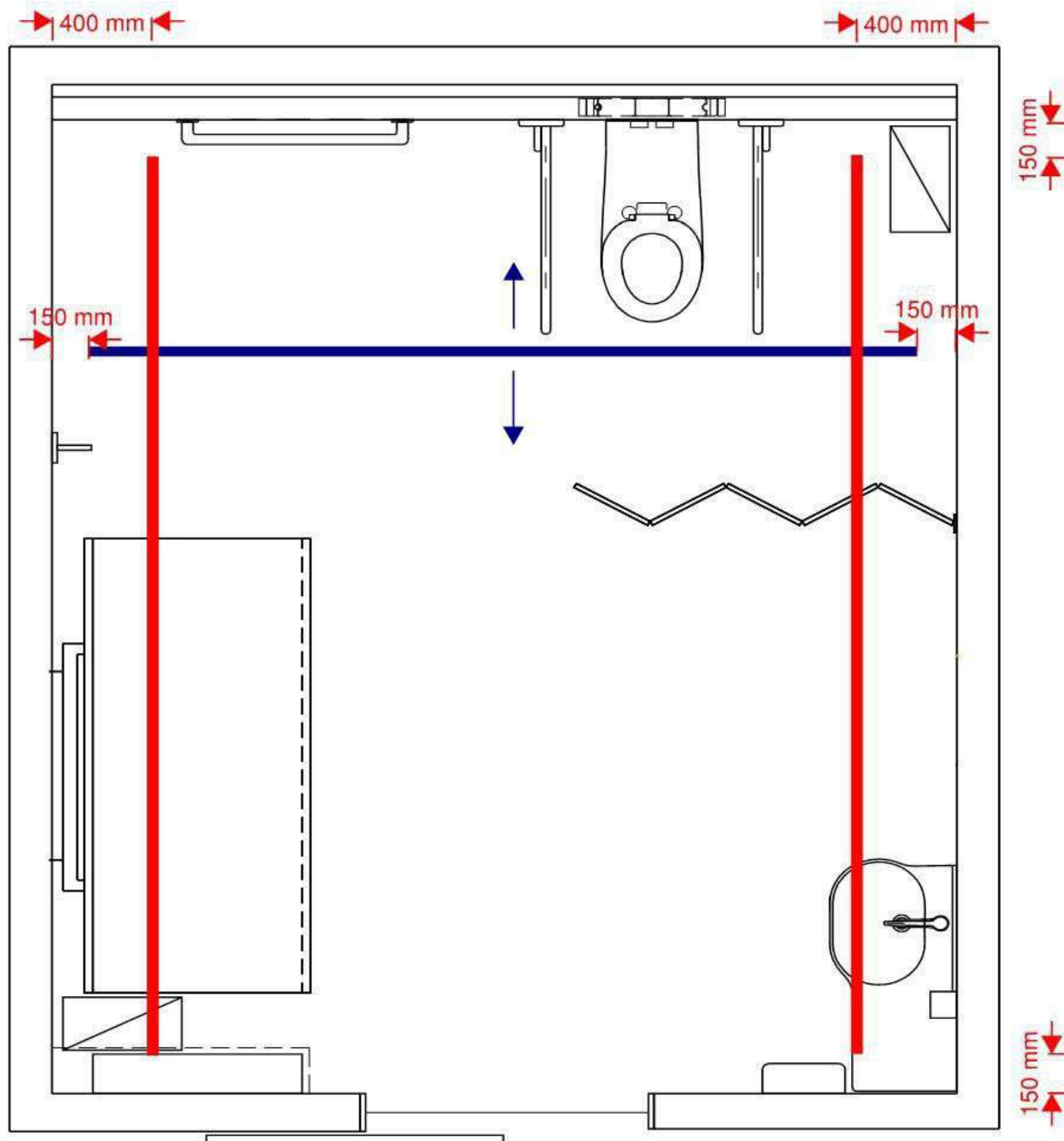
## Changing Places Hoist Clearances

### Stellar 440F



### C450M





Rail locations are indicative only, other configurations are possible to avoid clashes

Dimensions detailed based on an underslung traverse (blue) rail. If an inset above mount traverse (blue) rail is required to save height, the parallel (red) rails must be pushed out from 400mm to 100-200mm off the finished walls.

Maximum span and cantilevers for Slimline and Supa Rails detailed in the chart below:

Rail Type	Maximum Span	Maximum Cantilever
Slimline Rail	2200 mm	400 mm
Supa Rail	4500 mm	500 mm

Larger spans are achievable with the use of a Piggyback rail



1300 789 420  
sales@chshealthcare.com.au

**Project**  
Ceiling Hoist Systems

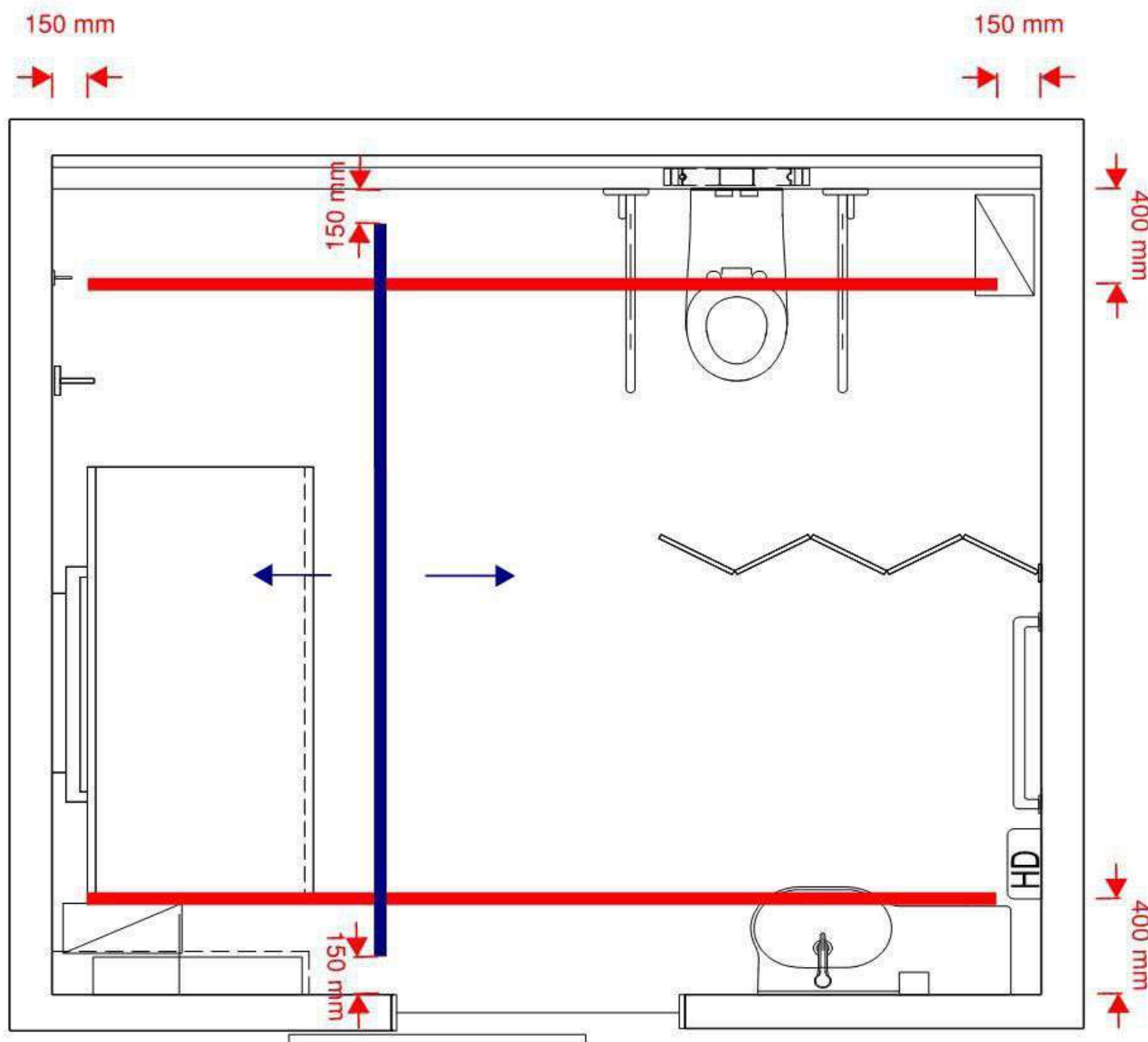
**Client**

**Drawing**  
TYPICAL RAIL LOCATIONS

Design	Drawn	Check
Date	Scale NTS	Sheet
Project No	Drawing No	Rev.

Design	Drawn	Check
Date	Scale NTS	Sheet
Project No	Drawing No	Rev.





Rail locations are indicative only, other configurations are possible to avoid clashes

Dimensions detailed based on an underslung traverse (blue) rail. If an inset above mount traverse (blue) rail is required to save height, the parallel (red) rails must be pushed out from 400mm to 100-200mm off the finished walls.

Maximum span and cantilevers for Slimline and Supa Rails detailed in the chart below:

Rail Type	Maximum Span	Maximum Cantilever
Slimline Rail	2200 mm	400 mm
Supa Rail	4500 mm	500 mm

Larger spans are achievable with the use of a Piggyback rail



1300 789 420  
sales@chshealthcare.com.au

**Project**  
Ceiling Hoist Systems

**Client**

**Drawing**  
TYPICAL RAIL LOCATIONS

Design	Drawn	Check
Date	Scale	Sheet
	NTS	
Project No	Drawing No	Rev.



## CHS Supa Rail

### Rail Systems & Accessories

---

The thicker profile of the Supa Rail allows for extended spans between supports, making it suitable for XY traverse rails and wall mount situations. Reduced depth provides a more aesthetically pleasing finish without loss of lift height.

#### Technical Specifications

**Height:** 84mm

**Width:** 76mm

#### Features

- Suitable for extended spans
- Suitable for XY traverse rails & wall mount situations
- Reduced depth allows for polished finish

#### Product Code:

4M (CHSSR04), 6M (CHSSR06)





## CHS Fineline Rail

### Rail Systems & Accessories

---

CHS Fineline rails are designed to be built into closed ceilings, giving a beautiful integral appearance. This concealed lightweight rail is suitable for systems up to 450kg SWL and suits CHS's full range of fixed and portable hoist units. Neat moulded access panels at rail end provide for hoist servicing needs.

#### Technical Specifications

**Height:** 76mm

**Width:** 58mm

**Track Opening:** 18mm

**Base Width:** 81mm

#### Features

- Suitable for systems up to 450kg SWL
- Suits all CHS Fixed & Portable Hoist Range
- Concealed appearance

#### Product Code:

2.0M (LFL02), 3.0M (LFL03), 4.0M (LFL04), 6.0M (LFL06), 7.2M (LFL072)



## CHS Stellar 440F

### Fixed Ceiling Hoist

The CHS Stellar 440F fixed ceiling hoist offer a cost-effective, flexible solution for patient lifting. The hoist offers the new Kinetic Charge System and automatically recharges whenever the hoist is lowered. The CHS Stellar 440F is equipped with a quick and safe emergency lowering system and an SWL of 200Kg. Easy and cost-effective, the CHS Stellar 440F range of hoists can be serviced without removal from the ceiling tracks. The hybrid automatic recharging system allows CHS Stellar 440F & 880F units to automatically recharge, giving more battery life as well as reducing service costs and lowering its environmental impact. The CHS Stellar 440F has an on-rail service capability that enables the availability of a powered traverse.

### Features

- The hybrid automatic recharging system allows CHS Stellar 440F & 880F units to automatically recharge, giving more battery life than any other ceiling hoists
- Heavy duty capacity system with a single lifting motor, allows for the lifting, transferring and positioning of virtually every patient
- Manual or power traversing models available
- Strong and highest quality build
- Quick change battery pack whilst on the rail
- Emergency stop and emergency lowering
- In-built service counter and diagnostics

### Technical Specifications

**Drive:** 24 V motor

**Battery:** 2 x 12V Batteries

**Lifting range:** 2,500 mm

**Max. patient weight:** 200 kg



## Prism Medical C450

### Fixed Hoist

The Prism Medical C450 Hoist delivers innovation, affordability and quality. Ceiling hoists dramatically reduce injuries resulting from the handling of patients and residents in both institutional and home care settings. The C450 has been designed with a full set of standard features and can be safely operated by a single caregiver. Built for quiet operation, the hoist provides a smooth & effortless transfer. The C Series will lift up to a maximum of 205kg, allowing the greatest flexibility in the type of patients that can be transferred. For additional flexibility, powered traversing options can be included.

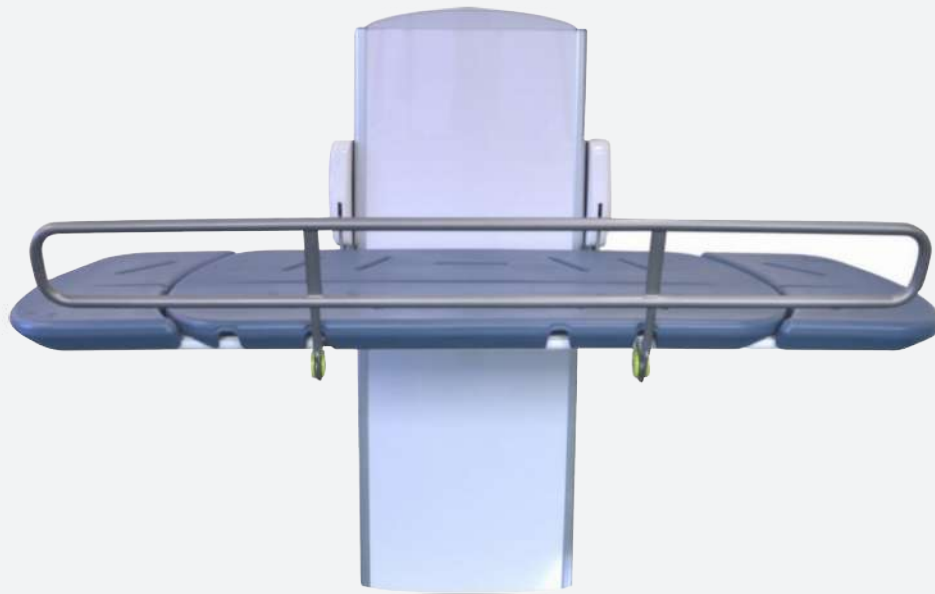
#### Technical Specifications

- Lift Motor 24V DC
- Traverse Motor 24V DC
- Charger Input 240V AC, 1.0 Amps
- Charger Output 24V DC, 1.5 Amps
- Battery 24V (2 x 12V DC), 5.0AH
- Hoist Case Flame Retardant ABS
- Hand Control Pneumatic 100% waterproof
- Yoke Stainless Steel
- Lifting Height up to 213cm
- Unit Weight Under 10kg
- Max Load 205kg
- Lift Speed 46mm/sec

#### Features

- Smallest Hoist of its class which allows for 180mm of additional lifting height
- Quick lifting speed
- Emergency pull cord
- Modular design for simplified maintenance
- Quick charge batteries for reduced service time
- Audible low battery indicator & visual battery/charge level display
- Digital readout
- Auto shut off when not in use, to save battery life
- 2.2 strap vertical movement allows you to easily lift from the floor
- Pneumatic Hand Controls – 100% waterproof
- Manual option – for emergency raising or lowering
- Available with return to charge option

**Product Code: 323100 / 323149**



## CTX

### Change Tables & Shower Trolleys

The CTX is the ultimate wall mounted changing table that allows the complex needs of daily care giving to be conducted in a comfortable and relaxed manner for both the care giver and cared for.

The height of the bed can be easily adjusted up or down via the handset, which also controls the integrated lighting. This combines to give a calm and relaxed environment for transferring and changing. Tilting head rests also offer enhanced comfort. The CTX changing tables are designed to withstand high usage in wet and humid environments with the inclusion of stainless-steel parts, a durable and comfortable moulded polyurethane bed with drain holes and an integrated water collection tray.

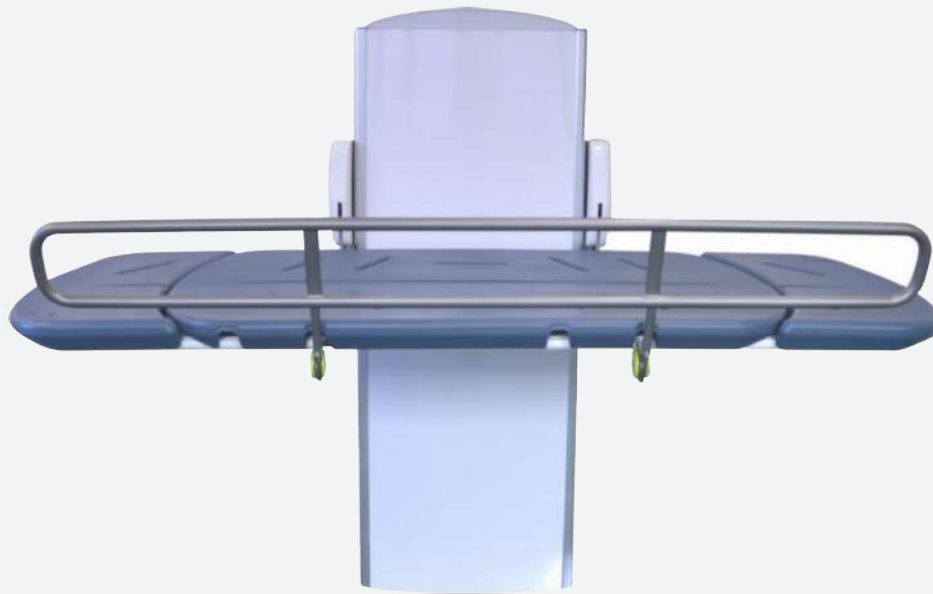
The innovative CTX can be floor or wall mounted and stows neatly when not in use to maximise room space, held in place with twin gas struts. It features battery back-up for safe lowering in the event of a power failure.

### Features

- Rust-free stainless-steel bed frame & components
- Moulded polyurethane padded bed/platform
- Integrated water collection tray with drain hose
- Integrated colour changing LED light
- 1x Integrated tilting headrest (1500mm model)
- 2x Integrated tilting headrests (1800mm model)
- 3 Year warranty (Terms and conditions apply)
- Calming ambience through integral lighting
- Comfortable polyurethane padded bed
- Discreet integrated water collection tray
- Flexible support with tilting headrests
- Added safety via optional guards
- Height Adjustable
- Mains Electric
- Battery Backup
- 200kg/31½st SWL
- LED Strip Light
- 3 Year Warranty

### Product Code:

00.036.00.1500 (1500mm) 00.036.00.1800 (1800mm)



## CTX

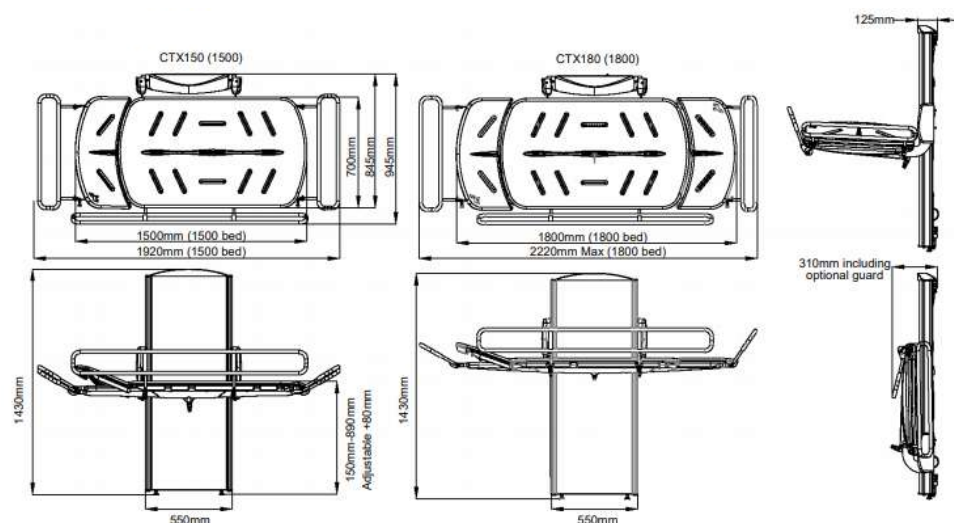
### Change Tables & Shower Trolleys

#### Optional Extras

- Bed sizes 1500 or 1800 x 700mm
- Fold away front safety guard
- Twin position side safety guards
- Front and end guards
- Protective padded guard bumper
- Range of service and maintenance packages

#### Application

- Private home
- School
- Leisure centre
- Care home
- Nursing home
- Respite home
- Hospital
- Changing places





## Nivano CTE Changing Table

### Change Tables & Shower Trolleys

Our easy-to-operate multi-purpose height-adjustable shower and changing tables come in standard lengths from 1200mm to 1900mm, with a weight capacity of 200kg. Non-standard sizes are also available.

The Nivano CTE changing table can easily lift a client up to 200kg from near floor level to a convenient height for washing and changing. It folds away very neatly when not in use, protruding just 220mm from the wall and features battery back-up for safe lowering in the event of a power failure.

#### Technical Specifications

**Standard Lengths from:** 1200 to 1900mm

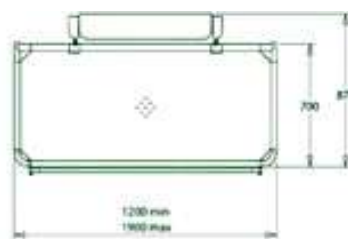
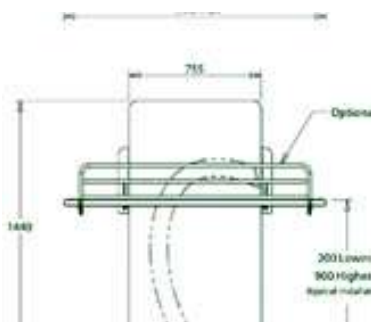
**Weight Capacity:** 200kg

**Travel Range:** 920mm

**Folded Width:** 1440mm

#### Features

- Folds neatly away
- Battery back-up for safe lowering
- Lifts from near floor level
- Optional fold out guard & guard bumper
- Optional removable mattress
- Optional padded top
- Optional anti-splash skirt
- Optional tilting backrest



**Product Code:** CTE



## CHS Wipe Dispenser

### Change Tables & Accessories

The CHS wipe dispenser is a wall mounted, super sleek, streamlined and fully functional in various applications. The stainless steel wall mounted stand works with many equipment wipes and is easy to refill. The unique sturdy Silicon valve allows a single wipe to be dispensed minimising wastage as wipes are dispensed.

#### Technical Specifications

**Height:** 300mm

**Width:** 240mm

**Depth:** 230mm

#### Features

- Easy fastening
- Modern and sanitary stainless steel
- Wipes not included

**Product Code:**  
**CHSWWD01**





## ROPIMEX RFW

### Privacy Curtains & Screens

The Ropimex RFW can be used flexibly as a screen or partition in a hospital and or care facility. This robust and impact-resistant folding wall can be brought into position swiftly and just as quickly returned to its storage position on the wall. The number of leaf sections can be extended later as required.

#### Features

- Space-saving, fold-away and ready to use again in seconds
- Non-see-through but translucent material creates a pleasant and light atmosphere
- Easy clean and scratch resistant surfaces
- Modern designs and colours to add an individual touch

#### Technical Specifications

**Height:** 1,450 – 1,850 mm (min. – max.)

**Leafs quantity:** 3 -10 (min. – max.)

**Rotation:** 360°



## ROPIMEX RTS

### Privacy Curtains and Screens

This model is a telescopic arm that has the ability to swivel ensuring you won't trip over anything hanging on the wall. This is the best reason for the use of telescopic arms - the screening system is only there when it is needed. Following use of the screen, simply push together and turn toward the wall. Your room is then restored to its usual appearance. Ropimex RTS extends up to 2100mm. For longer rail or connections, contact us.

### Features

- Can be folded out of the way when not in use giving the room a normal appearance
- Compatible with CHS Healthcare systems unlike normal rail and curtain systems
- Simple and easy to use with many varying installation features to suit every situation
- Optional curtain styles and colours to match or brighten any room

### Technical Specifications

**RTS 2.1 length:** 850 – 2,100 mm (min. – max.)

**RTS 1.5 length:** 650 – 1,500 mm (min. – max.)

**RTS 1.2 length:** 550 – 1,200 mm (min. – max.)



## Ropimex Curtains - TCS Trevira

### Privacy Curtains and Screens

Ropimex® curtains TCS Trevira are made from Trevira®CS / Trevira®CS BIOACTIVE. They have passed every fire test world wide, for that extra safety.

They are ideal for protecting privacy in healthcare and care facilities, as attractive room partitions and as a room divider covering.

#### Features:

- Trevira®CS has an antibacterial effect
- The physiological and dermatological properties are excellent
- Trevira®CS Bioactive is also permanently antimicrobial
- Curtains made of Trevira®CS are washable up to 60°C with disinfectant
- Available in 11 colours- lilac, heather, sun yellow, melon, peach, azure, light blue, white, light green, rose and champagne.

Width X Height in cm	
TCS 110	110 X 175
TCS 121	140 X 120
TCS 122	140 X 140
TCS 123	140 X 175
TCS 151	170 X 120
TCS 152	170 X 140
TCS 153	170 X 175
TCS 200	200 X 175
TCS 211	230 X 120
TCS 212	230 X 140

Width X Height in cm	
TCS 213	230 X 175
TCS 215	250 X 175
TCS 217	270 X 175
TCS 300	300 X 175
TCS 330	330 X 175
TCS 360	360 X 175
TCS 390	390 X 175
TCS 420	420 X 175
TCS 460	460 X 175
TCS 500	500 X 175

# Ceiling Hoist

## Help Guide



**Changing Places**  
**Transforming Lives**

### 1 The STELLAR Ceiling Hoist. What to do & how it works?

- Hold and use the spreader bar to pull the hoist into a clear area for safe use. Make sure there are NO obstructions around you.
- Take care to familiarise yourself with the features of this hoist.
- Max user weight 200kg.

### 2 The hand control, spreader bar and your sling

- The hoist has 2 buttons - up and down
- Do not pull hard on the hand control cord
- When the hand control is not in use clip the hand control over the spreader bar (left) to keep it safely out of the way
- Keep all obstructions clear when lifting

### 3 Emergency STOP & Lower

- On the hoist is **red emergency** stop cord. This cord is only for emergencies. Pulling this cord will stop power to the hoist and the hoist motor will stop sharply.
- To **emergency lower** pull and keep hold of the chord at the lowered position.
- To **reset** the switch press the metal button back up.

### 4 Slings

- Unfasten slings to disengage after emergency stop & lowering.



Need assistance? Call CHS Healthcare

**1300 789 420**

[www.chshealthcare.com.au](http://www.chshealthcare.com.au)

Proudly supported by



**CHS Healthcare**  
We're Here For You

# Ceiling Hoist

## Help Guide



**Changing Places**  
**Transforming Lives**

### 1 Product description:

This ceiling hoist is intended for lifting children and adults up to 200kg. This equipment must not be used for any other purpose.

### 2 Pre use checks:

Hold and pull the carry bar, moving the hoist to an area free of obstructions. Take care to familiarise yourself with the functions and controls (see fig 1).

### 3 Instructions for use

The hoist is controlled via the hand control (see fig 2). Do not pull the hand control with force. When the hand control is not in use, clip over the carry bar. Keep all obstructions clear during lifting.

### 4 Slings

This hoist is designed for use with loop style slings only. If unsure do not use your sling.

### 5 Trouble shoot

If the hoist is not working check to see if the emergency stop cord has been pulled into the down position, disabling the hoist (see fig 3).

To re-enable push white clip, attached to the top of the red cord, up toward the hoist. If unable to reach use the carry bar.

FIG.1

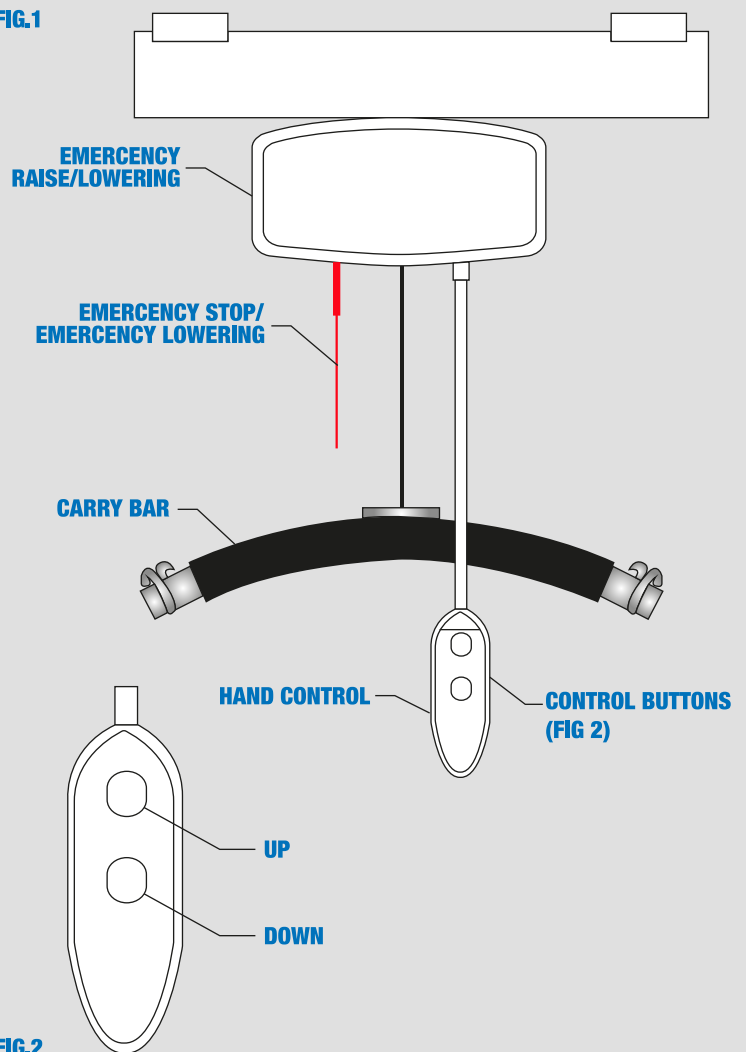


FIG.2

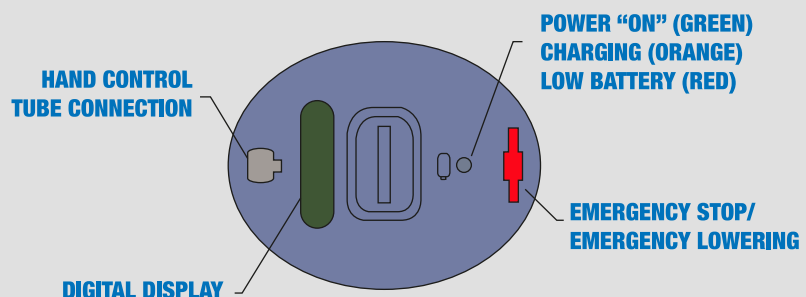
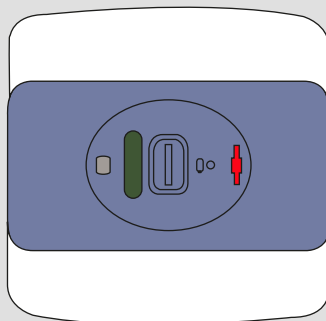


FIG.3

### 6 Emergency lowering

If the hoist becomes stuck or won't lower, pull the red cord and press the down button on the hand control simultaneously to lower the carry bar to the desired height. Use this function only in an emergency.



# Change Table

## Help Guide



**Changing Places**  
**Transforming Lives**

### 1 Product description:

This changing table is intended for showering and changing children and adults weighing up to 200kg, the table must not be used for any other purpose.

### 2 Pre use checks:

Check for obstructions or items that may become trapped when the changing table is operated. Check the changing table will raise and lower properly using the handset

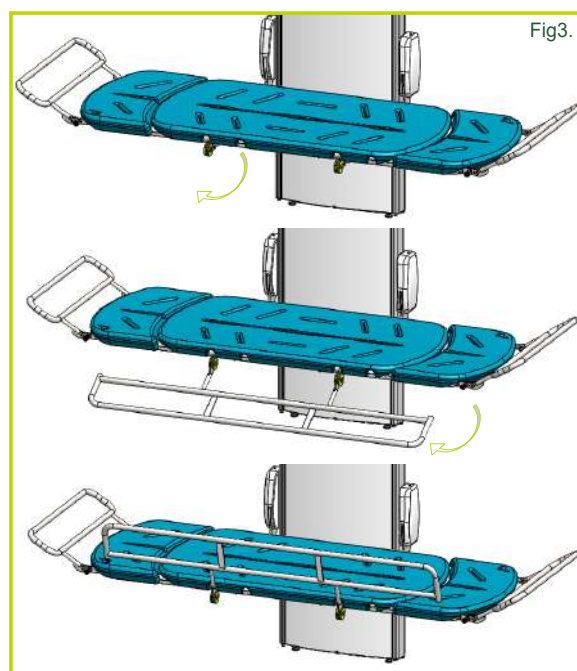
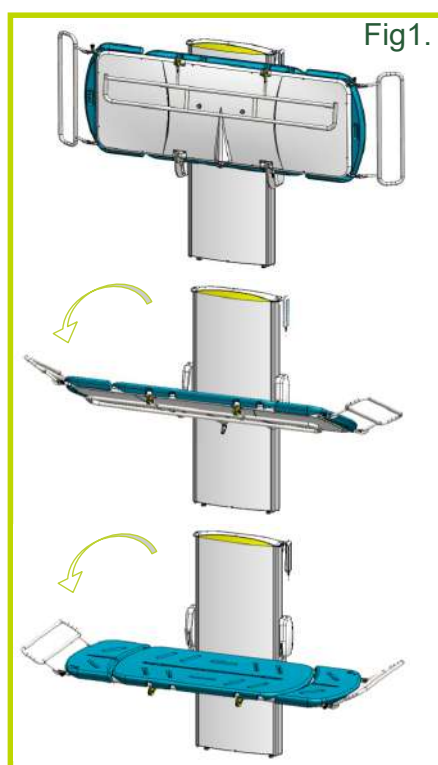
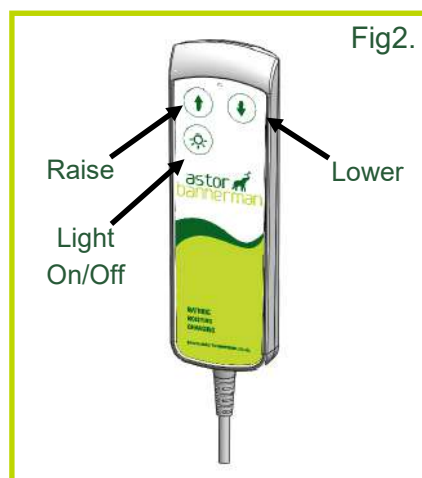
### 3 Lowering the bed:

To fold the bed to the useable position, simply hold the bed and lower as indicated in figure 1. To stow the bed lift and fold bed until parallel with the cover.

### 4 Instruction for use:

Operation of the change bed is via the hand control. See figure 2.

To use the guard, pull on it from the stowed position and rotate it around to the upright position. Once upright it will drop and lock in place (see figure 3). To stow, lit up until it can be rotated backward. Rotate under the bed until the magnets hold it.



Need assistance? Call CHS Healthcare

**1300 789 420**

[www.chshealthcare.com.au](http://www.chshealthcare.com.au)

Proudly supported by



**CHS Healthcare**  
We're Here For You

# Change Table

## Help Guide



**Changing Places**  
**Transforming Lives**

### 1 Product description:

This changing table is intended for showering and changing children and adults weighing up to 200kg, the table must not be used for any other purpose.

### 2 Pre use checks:

Check for obstructions or items that may become trapped when the changing table is operated. Check the changing table will raise and lower properly using the handset.

### 3 Lowering the bed:

To fold down the bed to the usable position, simply hold the bed and lower as indicated by the arrow in Fig 2. To stow bed, lift and fold bed upwards until parallel with cover.



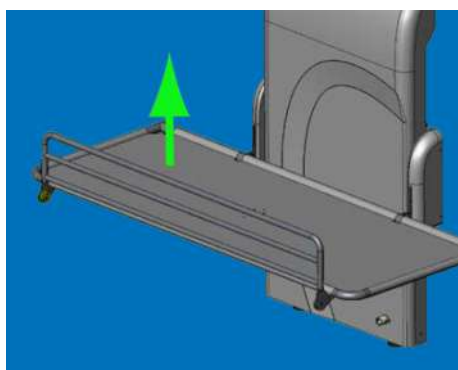
Fig 1



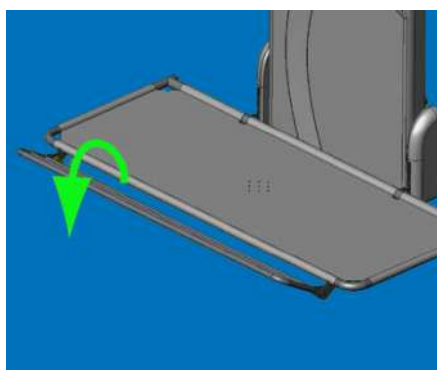
Fig 2

### 4 Instruction for use:

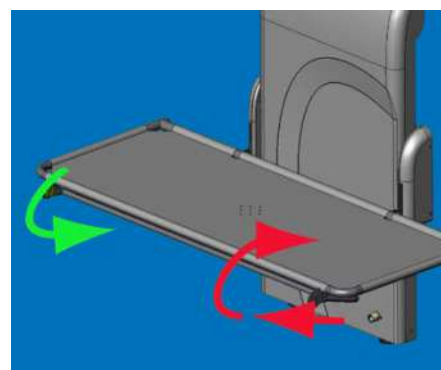
Operation of the change bed is via the two button hand control. Position the bed at a comfortable height. See Fig 1



Operating the guard (where fitted). Folding the guard. Lift the guard upwards.



Then rotate it towards you and then fold under the bed.



It will then lock under the bed. To replace the guard lift it slightly towards you, it will then release, rotate upright and drop into position.