



Changing Places **Transforming Lives**

Information Guide & Technical Standard

JUNE 2017

We need **changing** **places** to go places



Index

Changing Places design specification, accreditation, costings and guidelines

Association for Children with a Disability	4
Foreword	5
Proven model	6
Angela's story	8
Liz's story	9
Andy's story	10
Brendan's story	11
Changing Places Technical Standard	12
Design Specification	13
Accreditation of Changing Places	15
Design options	16
Layout guidelines	17
Ceiling height	17
Ceiling hoist	18
Accessible toilet & grabrails	18
Hand wash basin	20
Fixtures & fittings	21
Change table	21
Changing rails	22
Shower	22
Flooring	24
Automated door	25
Signage	27
Design plans	30
Alternative Layouts	33
Variations to the Requirements	33
Changing Places design & development costs	35
Guidelines for the use of slings in Changing Places toilets	45
Key schemes	46
Changing Places Supporters	
Supporters	48
Changing Places Technical Advisory Team	49

Association for Children with a Disability

The Association for Children with a Disability (ACD) is an information, support and advocacy organisation for families of children with a disability. ACD coordinates the Changing Places initiative and can provide support in terms of:

- Responding to enquiries related to building a Changing Place (in conjunction with the Changing Places Technical Advisory Team)
- Marketing and promotion of existing Changing Places
- Developing partnerships to foster the growth of the initiative
- Management of accreditation for use of the Changing Places symbol

For further information, please contact ACD on 03 9880 7000 or visit our website www.acd.org.au



Association for
Children with a
Disability

Support Educate Influence Achieve





Foreword

The Association for Children with a Disability (ACD) is a not-for-profit community based organisation that was established in 1980. ACD works to improve the lives of children with a disability and their families by influencing public policy and advancing worthy initiatives.

Under the national building code, accessible toilets do not meet the need of all people with a disability.

For too long we have seen families confronted by social isolation due to not having adequate toilet facilities that meet the needs of their children and family members.

Some families in desperation to live a life outside of four walls, find themselves with no choice but to change their child on the cold floor of a public toilet. This option is unhygienic, undignified and presents health risks for both recipient and carer. Sitting in soiled clothing is the alternative but is undignified, unhealthy and often leads to urinary infection.

Can you imagine having to face such choices on a daily basis?

For these reasons, we have introduced Changing Places toilets to Australia.

Changing Places Toilets are a real improvement on standard accessible toilets. Each Changing Places toilet provides: a height adjustable adult-sized changing table, a tracking hoist system, enough space and a safe and clean environment.

The Changing Places Information Guide & Technical Standard provides a description of Changing Places facilities and why they are needed as well as the design specifications and costings needed to build a Changing Place.

The Changing Places website also provides advocates, disability service providers, people with a disability and their families with the tools to advocate for the installation of a Changing Places toilet in their local community.

The Changing Places concept was introduced successfully in the UK in 2006 with over 970 Changing Places toilets spread across the country. This has transformed the lives of hundreds of thousands of people, enabling them to be far more engaged in their own local communities.

Changing Places was introduced to Australia in 2012 with the establishment of a consortium called “Changing Places Victoria”. The Consortium, led by Maroondah City Council, developed an early relationship with Changing Places UK and set about developing designs for Changing Places toilets in Australia. It has since evolved into a nationwide initiative aimed at breaking down one of the fundamental barriers to inclusion for people with severe and profound disabilities.

The Technical Standard has been developed with the assistance of a range of professionals. I would particularly like to thank the following individuals for their invaluable assistance: Bruce Bromley (Equal Access), Lee Wilson (Philip Chun), Helen Fearn-Wannan and Francesca Davenport (Architecture and Access) and Jack Mulholland (Maroondah City Council). ACD is indebted to the Victorian State Government, Maroondah City Council and Jack for their respective support and leadership with the Changing Places project. ACD especially acknowledges the Victorian Government and the Department of Health and Human Services (DHHS) whose ongoing support to the Changing Places initiative and to the creation of several Changing Places facilities in key locations across Victoria has helped to create valuable momentum for the campaign, and has been an excellent demonstration of leading by example when it comes to inclusion of people with disabilities.

Finally, ACD would like to acknowledge the dozens of individuals and organisations across Australia who are working hard to advocate for Changing Place facilities in their community.

For further information on how to support Changing Places and to find a list of current Changing Places facilities in Australia, please contact ACD or visit www.changingplaces.org.au

I trust you will find the CHANGING PLACES INFORMATION GUIDE & TECHNICAL STANDARD to be a valuable and useful resource.

Eddie Chapman

Chief Executive Officer Association for Children with a Disability

Proven model

Changing Places was launched in the UK in 2006 where there are now over 970 Changing Places toilets located in shopping centres, tourist attractions, airports and other major public spaces in the UK.

Changing Places became a British Standard in 2009 and are acknowledged in the building codes as best practice. The concept is a proven model for improving social inclusion for people with severe disabilities.

Changing Places in Australia

The first official Changing Place in Australia opened at Ringwood Lake, Victoria in September 2014. Changing Places have now been built in key locations including the Melbourne Cricket Ground, Melbourne Zoo, Victoria Park Ballarat and the St Kilda Lifesaving Club. In total, 20 accredited Changing Places facilities are now operational across Australia.

The Victorian State Disability Plan known as Absolutely Everyone: State Disability Plan 2017-2020 features Universal Design prominently, with Changing Places considered a best practice example of universal design principles. This undertaking includes a commitment to build Changing Places, embed them in Victorian Government policy and identify current and future Victorian Government infrastructure projects where a Changing Places facility can be included.

We have also seen the Changing Places initiative begin to make significant progress in other states and in particular, Western Australia, where the state government has allocated funding to roll out several Changing Places in the next two years.

“We went to the Melbourne Zoo having heard that a Changing Places toilet had just been opened. We felt like a normal family for a change. We didn’t have the worry of our daughter drinking too much before we went out, we didn’t have to leave our family gathering early, we didn’t have to strain our backs lifting her onto a toilet. What we did do was have a fantastic time knowing we could access a clean, fully equipped toileting facility with ease when we needed to.”

Exact figures are difficult to come by, but the Australian Bureau of Statistics estimates that up to 1.3 million* Australians have a profound or severe core limitation and may require some or all of the equipment in a Changing Places toilet. Lack of appropriate toilet facilities is a major social barrier preventing families and individuals as it limits the places they can go and the time they spend out.

With the introduction of the National Disability Insurance Scheme, Australians with a disability will have access to more resources and opportunities than ever before, but what good is this new found freedom if they cannot enjoy a day at the beach or a trip to the shopping centre?

Changing Places will help enhance existing investment in accessibility and provide the final piece in the puzzle by enabling people with a disability to engage and participate fully in society.

National Disability Strategy 2010-2020 (NDS)

The National Disability Strategy 2010-2020 states that “people with disability may experience restricted access to social and cultural events and to civic, political and economic opportunities because of inaccessible attributes of the built and natural environment”. Changing Places toilets are an effective way to remove a key barrier to participation and contribute to the following NDS policy directions:

- Increased participation of people with a disability, their families and carers in the social, cultural, recreational and sporting life of the community
- Improved accessibility of the built and natural environment through planning and regulatory systems, maximising the participation and inclusion of every member of the community
- A public, private and community transport system that is accessible for the whole community.

Carers

The Wellbeing of Australians - Carers Health and Wellbeing (Deakin University, 2007) the following was identified:

- Carers have an average rating on the depression scale that is classified as moderate depression.
- Carers are highly likely to be carrying an injury presumably caused by their caring activities.
- Carers are more likely than is normal to be experiencing chronic pain as a result of repetitive and unassisted lifting.

Changing Places toilets enhance the carer's physical wellbeing through removing the need to lift the person with a disability. The carer's wellbeing will also be enhanced through increased social opportunities and the removal of the everyday stress of planning around the bathroom needs of the person they are caring for.



* Australian Bureau of Statistics, *Disability, Ageing and Carers, Australia: Summary of Findings, 2015. Table 2.1 Persons with a profound or severe core activity limitation, by age and sex - estimate.*

Angela's story



My youngest daughter has cerebral palsy. She uses a wheelchair and needs to be hoisted from her chair to the toilet, bed etc. Usually, any outings we do as a family need to be planned around going to the toilet and are much shorter than we would like them to be. However two weeks ago we went to the Melbourne Zoo having heard that a changing places toilet had just been opened. Well, we felt like a normal family for a change. We didn't have the worry about our daughter drinking too much before we went out, we didn't have to leave our family gathering early, we didn't have to strain our backs lifting her onto a toilet.

What we did do was have a fantastic time knowing we could access a clean, fully equipped toileting facility with ease when we needed to. We have also used the changing places toilet at the MCG, again this was great as we were celebrating my husband's 50th Birthday there and it would have been very disappointing to leave his own party early.

We need more and more of these facilities available in many more public places. How easy would it be to put in one or two of these facilities in a major shopping centre? Everyone deserves the right to leave their home to access the community and know that a toilet is available for them to use as others do.

Liz's story

Liz is 28 has a Bachelor of Social Work but finds employment opportunities are almost non-existent as we have a community without toilets that meet her needs.

For the last two years Melbourne has been crowned as the most livable city in the world - that is if you don't have a disability". "We have Australian Building Standards for accessible toilets which unfortunately are discriminating in that they do not meet the needs of all people with a disability.

As everything is built to standards, like so many other people with a disability, I'm left to try and engage in the community without the availability of toilets.

This is extremely limiting where leaving early has become all too familiar. Missing a concert I paid for, leaving meetings half way through, missing the end of the movie, leaving the shops without acquiring what you came for is very emotionally draining.

There are no alternatives as there is a no lifting policy for support staff so if you cannot stand up, like me, public accessible toilets are not an option, sitting in soiled pads it is not only humiliating but has impacted on my health resulting in infections and bleeding.

Before Changing Places the only alternative was to not go out at all and stay at home. With Changing Places being built around Australia and at popular sporting arenas like the MCG, I can now comfortably go out and see my favorite football team without having to worry about my toileting needs.

The idea of being stuck inside four walls is soul destroying for me as I am an extrovert by nature with a love of people. I feel like a bird with my wings clipped.

Having Changing Places toilets has changed everything and now provides me with opportunities for employment, shopping, movies, concerts, visiting family and friends rather than being stuck online at home. Best of all it now provides me with a life, a life outside of four walls.

I have a dream!!!!

Andy's story

Hi my name is Andy and I have worked within the disability field for over 20 years, the last five with people with a disability that use wheelchairs.

This includes supporting people to be involved in special events, that we all enjoy, from the Australian Tennis Open, test match cricket, Puffing Billy, AC-DC in concert to Buddy Holly story on stage.

Our day would start at 9am at a centre with a meet and greet and a cuppa.

We then take care of any personal needs of the people we support at the centre, using a change table and hoist, and by 10am we would be on a bus or using public transport, packed with lunch for the day and all the necessary items to have a great day out; including medication, sunscreen and emergency information folder. And as we left, we would all quietly hope that we didn't have any toilet requirements.

While on an outing, we would assist the people we support with lunch. However some of the people we support will refuse drinks while on outings, because they are scared that they would need to go to the toilet. Going to the toilet means sitting in extreme discomfort and indignity with soiled pads or turning around and going back home. By about 2pm there is no alternative but to arrange to return to the centre to attend to personal care needs as we have to balance the enjoyment of such outings with the risk of urinary infections.

Considering the travel time and time spent at such outings as the tennis, cricket and concert how long could you hold off from going to the toilet? Imagine the anxiety of knowing at some stage your enjoyment and comfort will change dramatically as nature calls.

So desperate to make the most of their limited opportunity some look to refuse a drink even on a 37 degree day. This presented us with another health issue as we look to ensure their safety and welfare.

Going back to the centre can be really tough as you can feel the change as yet another potential memorable day has been cut short. The smiles of joy seen not that long ago have all but disappeared.

If we had Changing Places, the health and well being of the people I support would be better because they wouldn't be sitting in soiled pads waiting for us to get back to the centre to change, or having to hold for long periods of time. Outings such as the Australian Tennis Open, concerts, the football we could stay for the entire day ensuring we maximise the opportunity for the people we support and they could finally get to enjoy the tense moments of the conclusion of a match or an encore of a concert, imagine that!. Outings would no longer be cut short.

It sometimes means that the choice for the people we support becomes: do I go out and enjoy myself until the moment of needing to go or do I stay at home or in the centre and miss out on one of the highlights of my year? And is it worth the money if I miss the ending anyway?

Brendan's story

Hi my name is Brendan and I am 26. I enjoy a busy life doing lots of things like part-time courses, choir, going to the footy to see the Tigers play, singing, church, live concerts, local festivals and hanging out with my friends. Singing is my passion and I enjoy it. I get about in my van and use public transport alot.

It's fantastic when I can go out with my friends but doing that is complicated because we all have different needs. Without Changing Places my day becomes restricted to being close to home so I can have my personal care needs met. This really limits where I can go.

I am also a passionate self-advocate and I want you to know how important Changing Places are to me, not only for myself and my friends but also for tens of thousands of other children and adults with disabilities. Some people are "changed" on the floor of a disabled toilet, I don't want this so I have to go home to have my personal care needs met. What a waste of my time when I could have the same convenience and spontaneity as you if there were Changing Places. We need Changing Places with an adjustable height change table and hoist. You and I deserve the same right to dignity, hygiene and safety. This would happen if there were Changing Places available.

Living at home with mum, dad, my brothers and sister is great but I really like to get out and enjoy life. I do pretty much the same as my brothers and sister, but I have better taste in music. One of the major differences is I know they don't plan their days out around the only toilet they can use in the city.

Having Changing Places all over Australia would be great. They would give me the freedom to live a life with more choices about what I can do, where I can go and when I can do it – we really do need Changing Places to go places.



Changing Places Technical Standard



Design specification



Overview

The need

Changing Places toilets have been introduced to provide suitable toilets for people who cannot use standard accessible toilets. A Changing Places toilet allows people with high support needs to enjoy the day to day activities many of us take for granted. This may include people with an acquired brain injury, cerebral palsy, multiple sclerosis, spina bifida, motor neurone disease and their carers, as well as many other people with a disability.

Each Changing Places toilet needs a toilet pan, an adult size adjustable changing table, a ceiling hoist, sufficient circulation space and a safe, clean environment. However, the current version of Australian Standard AS1428.1 does not require such adult changing equipment in standard accessible sanitary toilets.

The provision of a Changing Places toilet is a great step towards meeting the intent of the Disability Discrimination Act by creating an inclusive built environment for all people with disability. Organisations and building owners who provide a Changing Places toilet, can proudly promote their awareness of community needs and commitment to their social responsibility on company websites and promotional materials.

Each Changing Places toilet is required to provide:

- A height adjustable adult sized changing bench
- A constant charging ceiling track hoist system
- A centrally located peninsula toilet
- Circulation spaces as defined in the design specifications
- Automatic door with a clear opening of 950mm at a minimum
- Other fixtures and fittings as detailed in the design specifications.

IMPORTANT NOTE

Changing Places toilets are to be provided in addition to and separate from standard accessible toilets

It is important to note that Changing Places toilets are not AS1428.1 accessible toilets and are based on Changing Places best design practice. They are not “required” toilets under the “deemed-to-satisfy” provisions of the Building Code of Australia (BCA) or Disability (Access to Premises - Buildings) Standards 2010 (Premises Standards). They are designed to meet the needs of people who require toilets that include features with alternative design and circulation space that current regular accessible toilets do not provide.

As such, the provision of any Changing Places toilet is considered to be above and beyond the current legislated requirement within each State or Territory in Australia and MUST be provided in addition to the “required” accessible toilets. Combining Changing Places toilets with regular accessible toilets compromises the needs of both user groups, therefore, they are required to be separate.

In order to be classified as a Changing Places toilet and use the Changing Places logo, facilities MUST undergo Changing Places Accreditation by an Accredited Access Consultant who has completed Changing Places Accreditation Training. They will assess if a facility complies with Changing Places design requirements or meets the key requirements in terms of circulation space and features. This is to ensure that any toilet advertised as a Changing Places toilet consistently meets the needs and expectations of the people who use them as well as their carers.

Design specification



Revisions since November 2015:

A few requirements have been added to the Changing Places designs based on key learnings from Changing Places currently in operation. These changes will apply after 30th June 2017. This change will not affect facilities accredited or substantially designed prior to this date.

- Constant charge ceiling hoist – The ceiling hoist shall have the ability to be permanently on charge to avoid flat batteries when the hoist has not been returned correctly to the charger
- Wall mounted, motorised height adjustable change table – Due to safety concerns freestanding fixed in place change tables will no longer be approved for Changing Places accreditation
- Privacy screen – A wall-mounted privacy screen installed 900mm from the front of the toilet pan
- Minimum 950mm wide entrance with either a manual or automatic door, 1100mm wide entrance for Changing Places that require beach wheelchair access
- Change table sanitizing wipe dispenser to clean the table before and after use (as an alternative to the paper table cover)
- Incontinence pad disposal bin- placed next to change table to ensure incontinence pads can be disposed of in a hygienic manner
- Option 1B layout has changed, see drawings for changes
- Green Changing Places facilities have been removed. Accessible toilets previously referred to as GREEN Changing Places will be recognised as an Adult Change Facility as these facilities do not meet the technical design requirements for a Changing Place. Adult Change Facilities are included on the Changing Places and National Toilet Location Map
- Changing Places design development costs have been updated
- All references to Australian Standard AS1428.1:2009 Design for access and mobility Part 1: General requirements for access – New building work have been deleted to avoid confusion with Changing Places design requirements.

Recommended extras:

The following features are suggested optional extras, but not required features for a Changing Place:

- MLAK key or swipe card locking system – To protect the facility from misuse or vandalism, it is recommended that the facility be locked
- Emergency management – It is recommended that the emergency occupant warning system to alert building occupants of an evacuation is extended to inside the Changing Place. An alarm speaker/sounder shall be installed inside the facility, with a visual alarm (strobe light), in accordance with 'AS1603.11-2010, Automatic fire detection and alarm systems - Visual warning devices'.

Accreditation of Changing Places



Facilities bearing the Changing Places logo are those built according to one of the three standard plans detailed in this guide or are based on alternative or modified plans which have been approved by Changing Places.

Please note: It is required that accredited Changing Places facilities be built in addition to and separate from required Unisex Accessible Toilets. This is to ensure that the needs of both groups of toilet users are met without compromise.

The Changing Places initiative will continue to support Adult Change Facilities which do not meet the requirements for accreditation by including them on the Changing Places and National Toilet location map.

Why is accreditation necessary?

Until Changing Places design specifications become a building code requirement, Changing Places Australia must ensure design consistency and quality control. In order to be classified as a Changing Places, facilities MUST undergo accreditation. This process ensures that all facilities which bear the Changing Places logo meet necessary standards and consistently meet the expectations of the people who use them as well as their carers.

Who can accredit Changing Places?

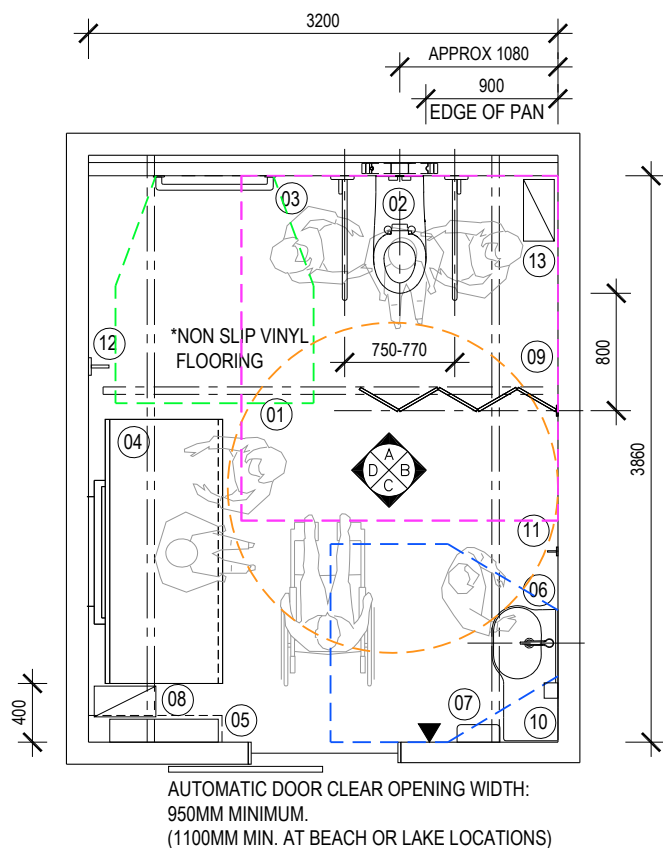
Please contact ACD to find an appropriate person to accredit your facility.

For any enquiries related to accreditation, please email info@changingplaces.org.au

Design options

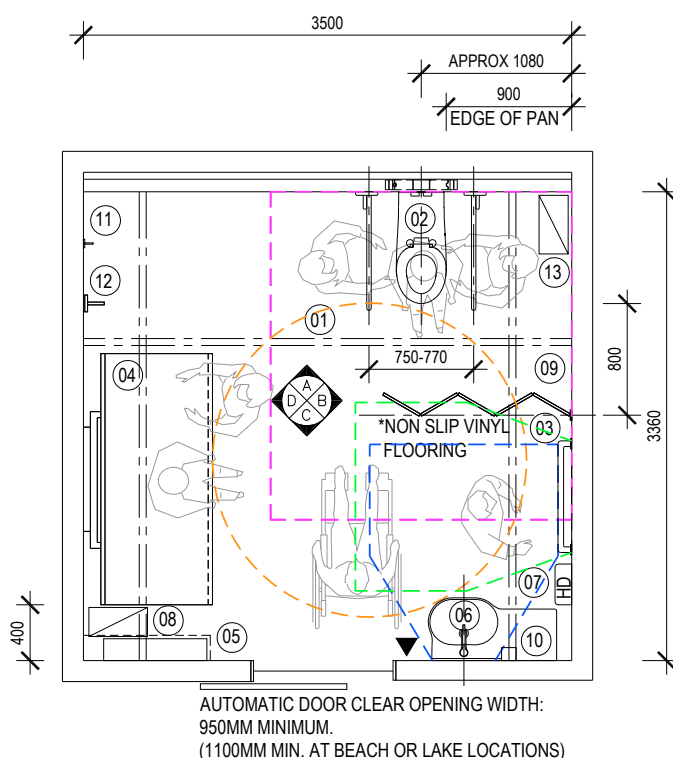
The Changing Places Consortium in Australia has developed three typical design options for use as follows. Exact measurements for fittings and fixtures are stipulated on the following pages.

The AutoCAD files for each design can be found on www.changingplaces.org.au/build-a-toilet/designs/



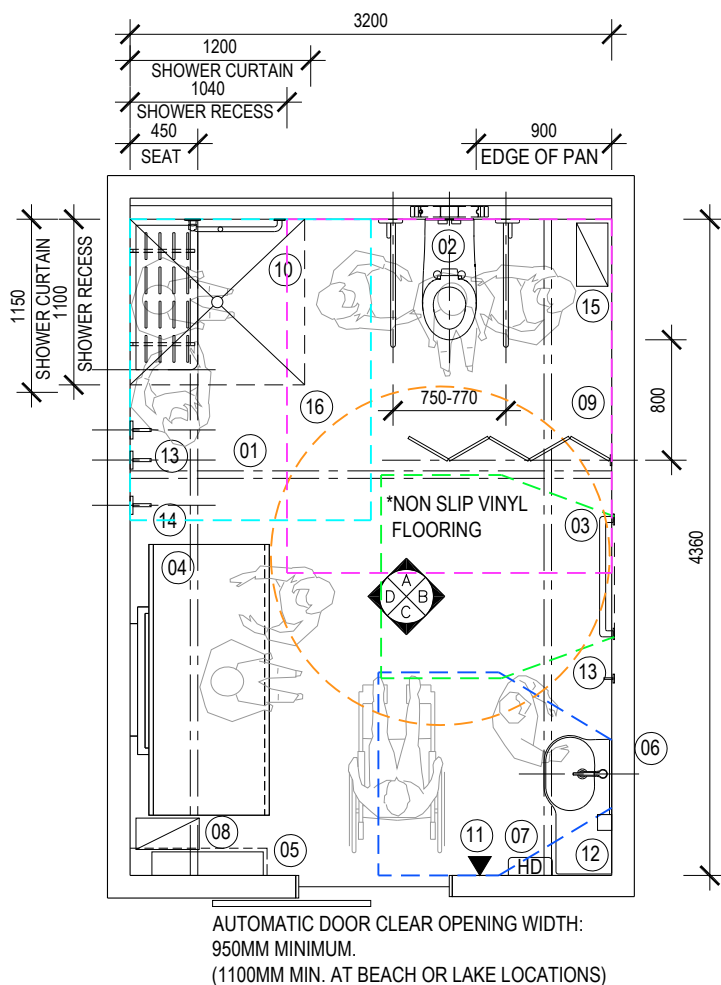
Type 1A

- 01 Constant charge room coverage hoist
- 02 Accessible peninsula style toilet and pan including backrest and two drop down grab rails
- 03 Wall mounted changing rails
- 04 Wall mounted, motorised height adjustable change table with side safety rail
- 05 Shelf and sanitizing wipe dispenser
- 06 Hand wash basin with integrated shelf
- 07 Hand dryer or paper towel dispenser
- 08 Incontinence pad disposal bin
- 09 Wall mounted retractable privacy curtain
- 10 Soap dispenser
- 11 Clothes hook
- 12 Large sling hook
- ▼ Automatic door control



Type 1B

- 01 Constant charge room coverage hoist
- 02 Accessible peninsula style toilet and pan including backrest and two drop down grab rails
- 03 Wall mounted changing rails
- 04 Wall mounted, motorised height adjustable change table with side safety rail
- 05 Shelf and sanitizing wipe dispenser
- 06 Hand wash basin with integrated shelf
- 07 Hand dryer or paper towel dispenser
- 08 Incontinence pad disposal bin
- 09 Wall mounted retractable privacy curtain
- 10 Soap dispenser
- 11 Clothes hook
- 12 Large sling hook
- ▼ Automatic door control



Type 2

- | | |
|----|--|
| 01 | Constant charge room coverage hoist |
| 02 | Accessible peninsula style toilet and pan including backrest and two fold up grab rails |
| 03 | Wall mounted grab rail |
| 04 | Wall mounted, motorised height adjustable change table with side safety rail |
| 05 | Shelf and sanitizing wipe dispenser |
| 06 | Hand wash basin with integrated shelf |
| 07 | Hand dryer or paper towel dispenser |
| 08 | Incontinence pad disposal bin |
| 09 | Wall mounted retractable privacy curtain |
| 10 | Accessible shower with wall mounted folding shower seat, grabrails and hand held shower. |
| 11 | Soap dispenser |
| 12 | Clothes hook |
| 13 | Large sling hook (must accommodate for 4 x 30mm wide straps) |
| ▼ | Automatic door control |

Layout guidelines

Ceiling height

The minimum ceiling height of the facility is to be determined by the design of the ceiling hoist specified for the facility. However the facility must achieve the following as a minimum requirement, with regard to the ceiling hoist installation and track system:

1. A minimum height of 2400mm clear unobstructed vertical height from the finished floor level.

Ceiling hoist

Provide a constant charge in-line room coverage hoist system, also called XY system or gantry, including 2 parallel fixed rails and a moving traverse rail. This provides coverage over the entire room for greatest flexibility when using the facility. Ensure full coverage of the bathroom, including toilet and change table, is provided.

Performance details

Track system equivalent to:

1. Rail system with a safe working load (SWL) equal to or greater than 180kg
2. Two fixed parallel rails
3. One moving traverse rail
4. Continuous in-line charging.

Hoist system equivalent to:

1. Fixed hoist
2. Lifting height up to a min 2100mm
3. Safe working load equal to or greater than 180kg.

Ensure lights, fans, sprinklers and other fixtures are located after the position of the hoist tracks has been determined.

Ceiling fittings are to be recessed or the hoist tracks are to provide sufficient clearance under the fittings to allow the free movement of the hoist track.

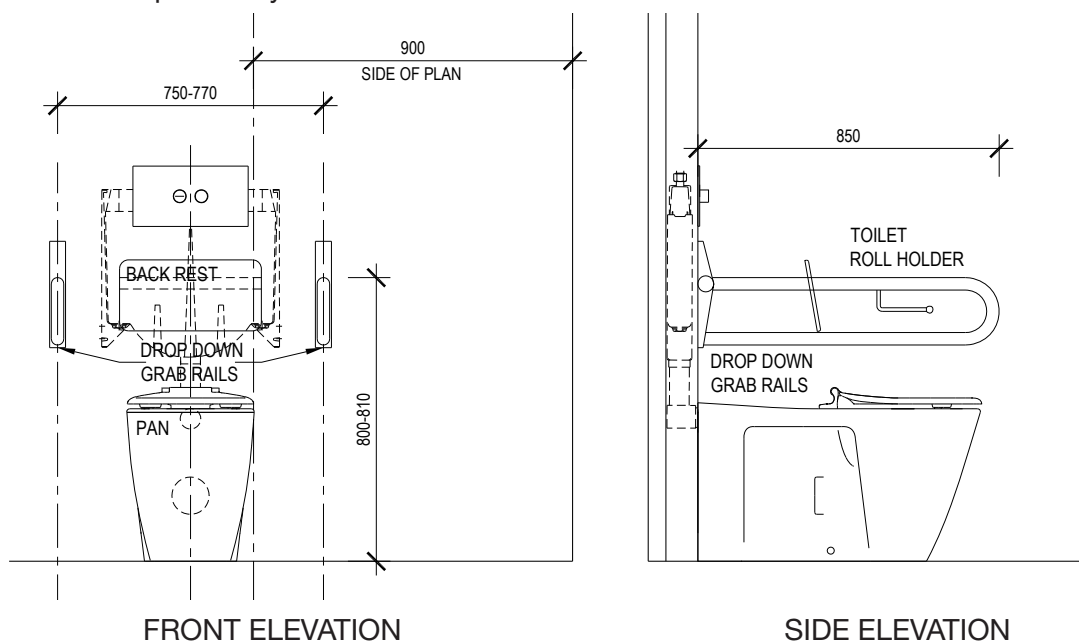
Accessible toilet & grabrails

Pan

A toilet pan with a wall mounted or concealed cistern shall be provided as detailed. The toilet pan shall be installed so that:

1. The front edge of the pan is 800mm \pm 10mm from the rear wall
2. The top of the seat is 460-480mm above floor level
3. A minimum 900mm wide circulation space is provided between the pan and the side wall and privacy screen.

Important note: A centrally located/peninsula toilet is a key feature of the Changing Places design to allow two carers to assist with the transfer. It may not meet the needs of individuals who can self transfer independently.



Seat

A toilet seat shall be provided that meets the following requirements including:

1. Be of the full-round type, (i.e., not open fronted) and with minimal contours to the top surface
2. Be securely fixed in position when in use
3. Have seat fixings that create lateral stability for the seat when in use
4. Be load-rated to 150 kg
5. Have a minimum luminance contrast of 30% with the background (e.g., pan, wall or floor against which it is viewed)
6. Remain in the upright position when fully raised.

Flushing controls

Flushing controls shall meet the following requirements, including:

1. Where hand-operated flushing controls are used, they shall be centred on the centre-line of the toilet (min height 600mm, max height 1100mm), as located in the relevant drawings. The position of the flushing control within this zone shall not be within the area required for any grabrails or backrest
2. The flushing control shall be proud of the surface and shall activate the flush before the button becomes level with the surrounding surface. If an automatic flush is being used then this is not required.

Backrest

A backrest shall be provided that meets the following requirements including:

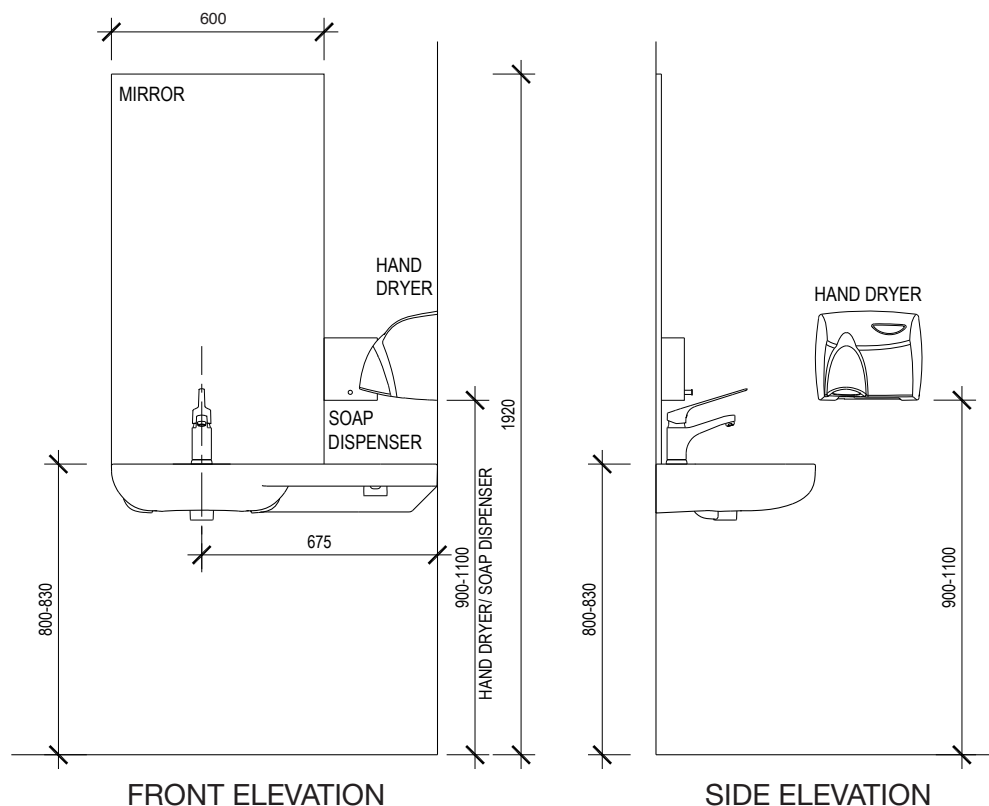
1. Be capable of withstanding a force in any direction of 1100 N
2. Have a height, at the lower edge of backrest to the top of the WC seat, of 120mm to 150mm
3. Have a vertical height of 150–200mm and a width of 350–400mm
4. The front edge of the centre of the backrest be positioned to achieve an angle of between 95° to 100° back from the seat hinge.

Toilet Grabrails

Drop down grabrails shall be provided and shall be:

1. Located at a height of 800-810mm to the top of the rail
2. Centreline of grabrails to be located 750-770mm apart and located equi-distance from the centreline of the WC pan, as indicated
3. 850mm minimum long
4. 30-40mm diameter
5. Securely fixed to withstand a force in any direction of 1100 N
6. At least one grabrail is to contain a toilet paper holder
7. Capable of being lifted up or swung away to allow unimpeded access to the WC pan.

Hand wash basin



Hand wash basin

A wash basin shall be provided that meets the following requirements:

1. The wash basin shall be installed within the height range to 800mm – 830mm
2. Exposed hot water supply pipes shall be insulated or located so as not to present a hazard
4. Water supply pipes and waste outlet pipes shall not encroach on the required clear space under the washbasin
5. Hand wash basin is to have an integrated shelf area of 300mm - 400mm long.

Tap

Water taps shall be provided that meet the following requirements:

1. Taps shall have single lever flickmixer handles, sensor plates, or other similar controls
2. Lever handles shall have not less than 50mm clearance from an adjacent surface
3. Hot water is to be provided. The water shall be delivered through a mixing spout, and temperature controlled with a thermostatic mixing valve.

Fixtures and fittings

Mirror/s

The mirror shall be one that meets the following requirements, including:

1. Provide a vertical mirror with a reflective surface not less than 600mm wide and shall extend from a height of not more than 900mm to a height of not less than 1850mm above the plane of the finished floor
2. Where provided, a second vertical mirror shall extend from a height of not less than 600mm to a height of not less than 1850mm above the plane of the finished floor.

Towel dispensers, hand dryers and similar fittings

Soap dispensers, towel dispensers, hand dryers and similar fittings shall be provided in compliance with following requirements. Each fitting shall be operable by one hand, and be:

1. Installed with the height of their operative component or output not less than 900mm and not more than 1100mm above the plane of the finished floor
2. No closer than 500mm from an internal corner.

Soap dispensers

1. Soap dispenser fitting shall be located as detailed.

Clothes hook

One clothes hook shall be installed between 1200mm to 1350mm above the plane of the finished floor located near the hand washbasin. This must be located no closer than 500mm from an internal corner.

Sling hook

One large clothes hook shall be installed beside the change table at 1500mm above the finished floor level and must be able to accommodate 4 x 30mm-wide straps.

Disposal Bins

The sanitary disposal unit shall be located as follows:

1. Sanitary disposal unit in the corner beside the pan
2. Incontinence pad disposal bin in the corner next to change table.

Change table

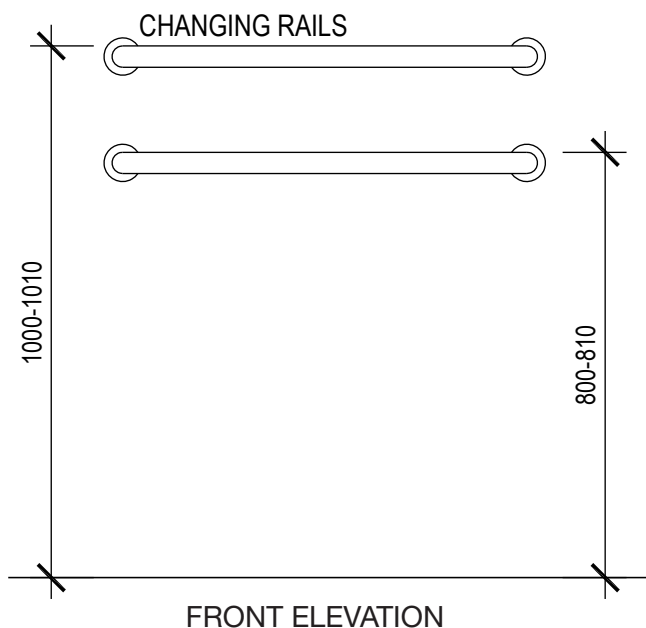
The general requirements for the wall mounted, motorised height adjustable change table are as follows:

1. Height adjustability from max. 450mm to min. 900mm above finished floor level
2. Minimum 700mm table width
3. A safety rail that can be folded up or down easily
4. Weight loading capacity to be min 180 kg.

Shelf beside change table with a fixed sanitary wipe dispenser

1. Provide sanitary wipes for cleaning of the table
2. Provide a shelf for storage of supplies by users of the room. Shelf to be a minimum 400mm long x 150mm wide.

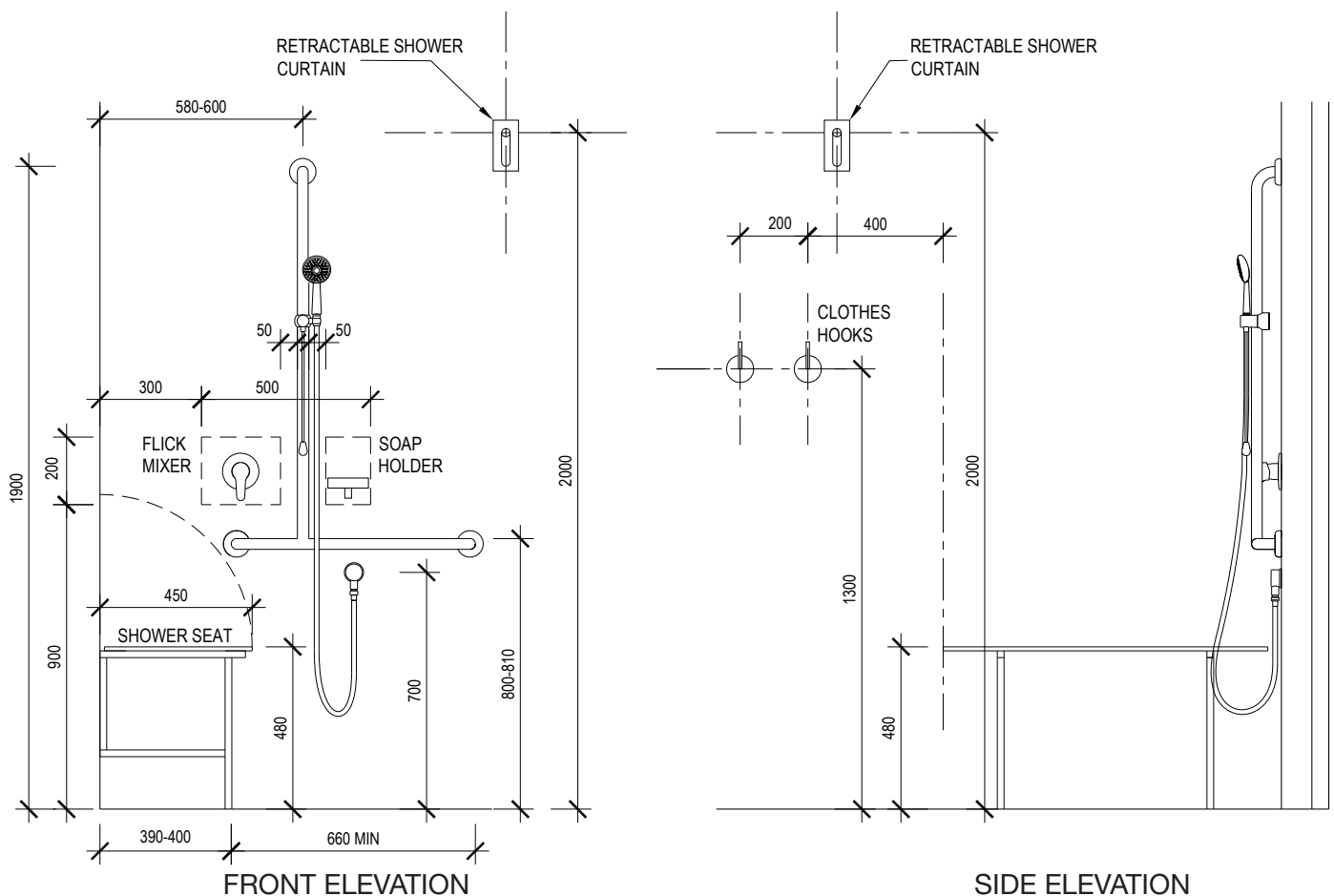
Changing rails



Provide two 32mm diameter, 800mm long changing rails installed horizontally at 800-810mm and 1000-1010mm above the plane of the floor level that allow users to hold onto whilst standing to have clothes adjusted.

Shower

Where included, shower installations shall comply with the following requirements.



Floor and waste outlet

The requirements for the floor and waste outlet are to be as follows:

1. The floor of the shower recess and associated circulation space shall be self draining and without a step-down, raised step kerb or hob at the entry to the recess
2. The waste outlet for the shower shall be provided in accordance with the floor plans
3. The slope of the floor of the shower recess shall have a gradient between 1 in 60 and 1 in 80
4. The slope of floor of the remainder of the sanitary facility shall have a gradient between 1 in 80 and 1 in 100.

Grabrails

Provide 32mm diameter grabrail/s which shall be fixed on the walls in the positions shown as detailed including top of the horizontal rail to be 800-810mm above the plane of the floor level.

Shower head support grabrail

A shower head support grabrail shall be fixed on the wall in the position as detailed including the top of the vertical rail to be at 1880-1900mm above the floor level. Where the horizontal and shower head support rails are not provided as a single unit, the lower edge of the shower head support rail shall be located 1000-1100mm above the floor level.

Shower head

A hand-held shower head shall be provided that meets the following requirements, including:

1. A flexible hose with a minimum length of 1500mm
2. An adjustable shower head holder shall be provided to support the shower head and shall:
 - a. Be installed on the shower head holder support grabrail as shown
 - b. Allow the graspable portion of the shower head to be positioned at various angles and heights
 - c. Allow the graspable portion of the shower head to be located at heights between 1000mm and 1800mm above the plane of the finished floor
 - d. Allow access and adjustment from a seated position.

Water outlet

The water outlet shall be located at 700mm +/- 5mm as detailed and be provided with a back-flow prevention device if required by plumbing standards.

Soap holder

The soap holder shall be located within the zone as detailed.

Taps

Flick mixer tap shall be located within the zone as detailed.

Folding seat

A 960mm long, 450mm deep foldable seat shall be provided inside the shower recess, as detailed and shall:

1. Be slip-resistant
2. Have front corners that are rounded to a radius of 10 to 15mm
3. Have top edges that are rounded with a minimum radius of 2 to 3mm
4. Shall fold in an upwards direction clear of the grab rail
5. Shall not be slatted.

Where drainage is provided by holes or slots in single unit seats, the diameter of the holes, the width of the slots shall be between 4 to 6mm.

The fastenings, materials and construction of the seat shall be able to withstand a force of 1100 N applied at any position and in any direction without failing or loosening of fastenings.

Clothes hooks for shower

Provide no less than two clothes-hanging devices, installed 1200mm to 1350mm above the plane of the finished floor and shall be fitted outside the shower recess.

One such device shall be located within 400mm+/-10mm and the other within 600mm+/-10mm of the folding seat.

Shower curtain

Two telescopic shower curtains shall be provided in the locations indicated in the drawings.

Flooring

The flooring shall have a minimum R10 or P3 slip resistance rating.

“I have to lay him down on dirty public toilet floors with his head under the pan where someone else has just peed. I don't like putting my handbag down on some floors; why on earth should I be expected to lie my precious son on them.”

Automated Door

Door Threshold

The threshold at the entry door shall incorporate a smooth transition without a step or lip.

Door Opening

The door shall have a clear opening of minimum 950mm. At beach or lake locations, provide a minimum clear opening of 1100mm to accommodate beach wheelchairs.

Contrast of doorway

The door must achieve a minimum luminance contrast of 30% between the following components as detailed below:

- door leaf and door jamb
- door leaf and adjacent wall
- architrave and wall
- door leaf and architrave
- door jamb and adjacent wall.

Door control locations

The automatic door controls shall comply as detailed and be installed in accordance with the design specifications. This requires the door controls to be:

1. Installed between 900–1200mm above the level of the finished floor level
2. Located at least 500mm from any internal corner or internally located a minimum 300mm from the basin as shown in the drawings.

Door control safety features

The automatic door shall be provided with the following safety features:

1. The automated door must be calibrated to have sufficient 'dwell' time to allow people to safely travel through the doorway with a gentle opening and closing operation to reduce the risk of impact to users of the facility
2. The automated door must be fitted with a fail-safe opening mechanism that opens the door if an object is detected during its closing operation.

Door control Braille and tactile text

The automatic door control signage shall include Braille and raised tactile text characters in compliance with Specification D3.6 of the Building Code of Australia.

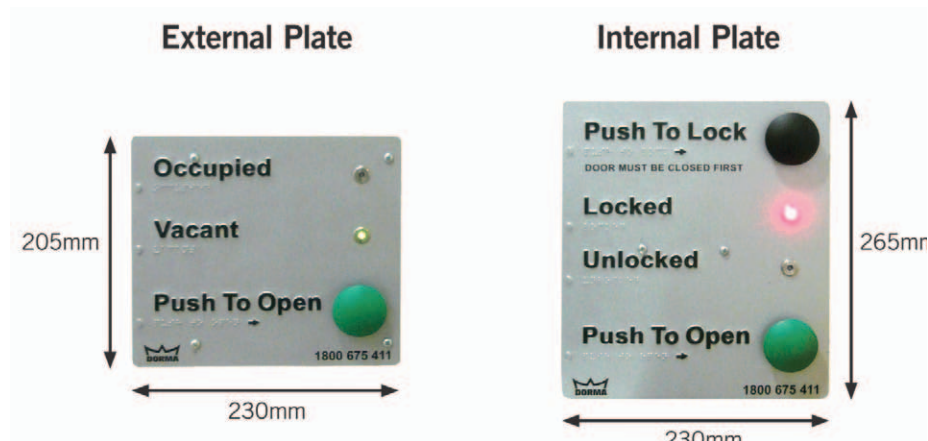
Door control operational requirements

The automatic door control plate signage shall achieve compliance with the following operational requirements (as a minimum):

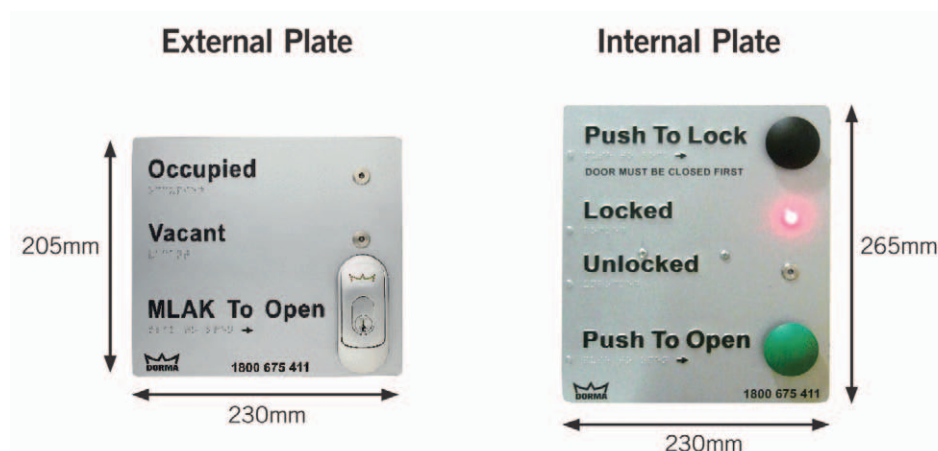
1. The “Push to Open” and “Push to Lock” buttons shall have a minimum dimension of 25mm diameter and be proud of the surrounding surface and shall activate the door before the button becomes level with the surrounding surface
2. All buttons shall be of a contrasting colour to the plate background
3. The external “Push to Open” button may be replaced with a Master Locksmiths Access Key (MLAK) where there is a risk of damage or vandalism to equipment. The MLAK is a locking system that enables people with disabilities to gain access to a network of public facilities as and when required

See <http://www.masterlocksmiths.com.au/mlak.php> Further information about MLAK systems is available on page 43

4. The external door control plate must indicate the method of opening the door (i.e. by way of a “Push to Open” button as shown in the image below, or by the use of an MLAK*)
5. “Occupied” and “Vacant” indicator lights are required on the external plate
6. “Locked” and “Unlocked” indicator lights are required on the internal plate.



An example of suitable standard door controls and signage is pictured left.



An example of suitable MLAK door controls and signage is pictured left.

Signage

External facility signage

Once a facility has passed Changing Places accreditation, a sign will be provided as part of your accreditation pack. The sign provided by Changing Places is compliant with specification D3.6 of the BCA. This sign is to be installed outside the facility doorway as detailed below:

1. Located on the wall on the latch side of the door between 50mm and 300mm from the architrave (BCA, D4.2 (c) (i))
2. Braille and tactile sign is to be located between 1200mm and 1600mm AFFL (BCA, Clause 2 Specification D3.6).

Changing Places are now trademarked in Australia. Further information about signage requirements and costs can be obtained by contacting Association for Children with a Disability.



Changing Places

Braille representation of the text 'Changing Places'.

“When we do go out we have to return home within 1-2 hours so he can be changed. No-one likes to sit at home staring at four walls.”

Internal signage

Change table operating instructions

The facility must provide signage detailing operating instructions for the hoist and change table. Please refer to the guidelines below to ensure your signage provides all necessary information.

These are only guides and we recommend you contact your equipment supplier to obtain brand specific operating instructions.

Change table operating instructions

The Safe Working Load for the bench is 200 kgs, this table is not to be used by persons above this weight.

The following instructions **MUST** be complied with each time the change table is used.

1. Gently unfold the table from the upright position.
2. Do not raise or lower the table whilst in the folded up position.
3. Nothing should stand in the way of the table when in motion.
4. Press the \wedge button to raise the table and the \vee button to lower the table.
5. Clean the table with the sanitizing wipe.
6. Raise the side safety rail when the person has been placed on the table. To unlock the side safety rail, pull out pin on right side and unfold.
7. After use, wipe down table with antiseptic spray and wipes /dispose of paper table cover.
8. Fold the side safety rail back to the flat position after use. Use pin to secure in place.
9. Fold the table up into the upright position.

Remember

- This table is not to be played with at any time. The table is to be used for the purpose for which it is designed.
- Children are not to operate the bench at any time.
- If the table is out of order, it must not be used.
- Reporting Maintenance - Signage should advise users of where to report maintenance issues to, including contact phone numbers.

Internal signage

Ceiling hoist operating instructions

To provide a sign detailing operating instructions for the ceiling hoist.

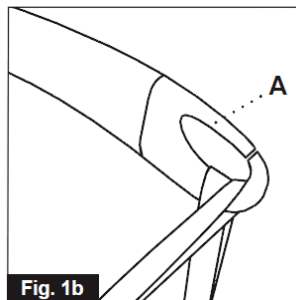
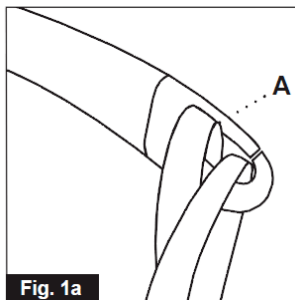
Refer typical signage layout.

Ceiling hoist operating instructions

The maximum Safe Working Load of this hoist is 180kg reduce weight recommended by manufacturer. This hoist is not to be used by persons above this weight.

If the red light is on, do not use this hoist. If there is any doubt about the safety of using this hoist, it MUST NOT be used. *(Picture of hoist with emergency light on, example outline below)*

1. Use the control to raise or lower the spreader bar to the required height.
2. Attach the hooks of the sling in the lifting hanger's hooks. Check the sling is securely attached before lifting the person. *(Fig. 1a & 1b)*

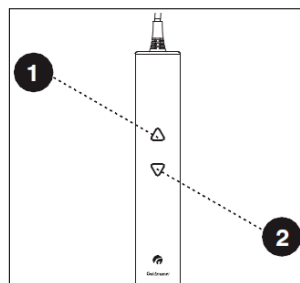


3. Check nothing will stop the hoist from lifting the person.

4. Use the control buttons to raise the person.

1 – Lift

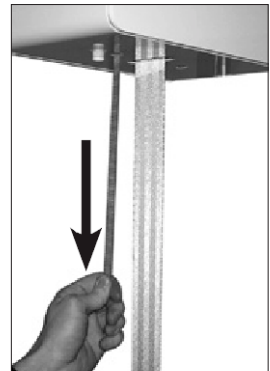
2 – Lower



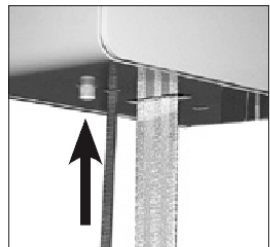
5. After use, return hoist to charging station.

(Picture needed)

6. Emergency lowering strap can be used to lower a person in an emergency. Pull the red strap (once/continuously).



Once activated the hoist will not operate until the yellow button is manually pressed in.



7. Warning lights

Green light – hoist is ready to use

Yellow light is on – hoist battery is low or flat. Hoist must be charged before using.

Red light – do not use

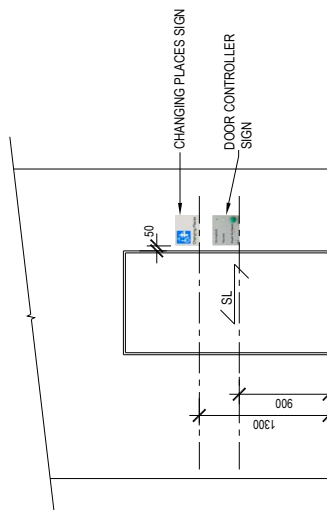
(or whatever is relevant for the chosen hoist)



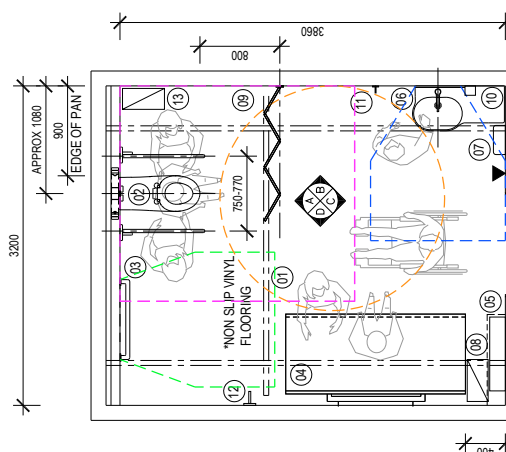
OPTION 1A DESIGN



EXTERNAL DOOR ELEVATION

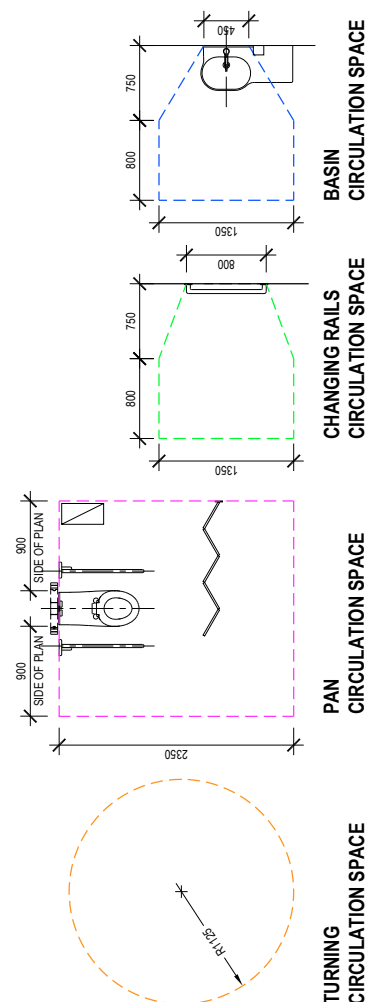


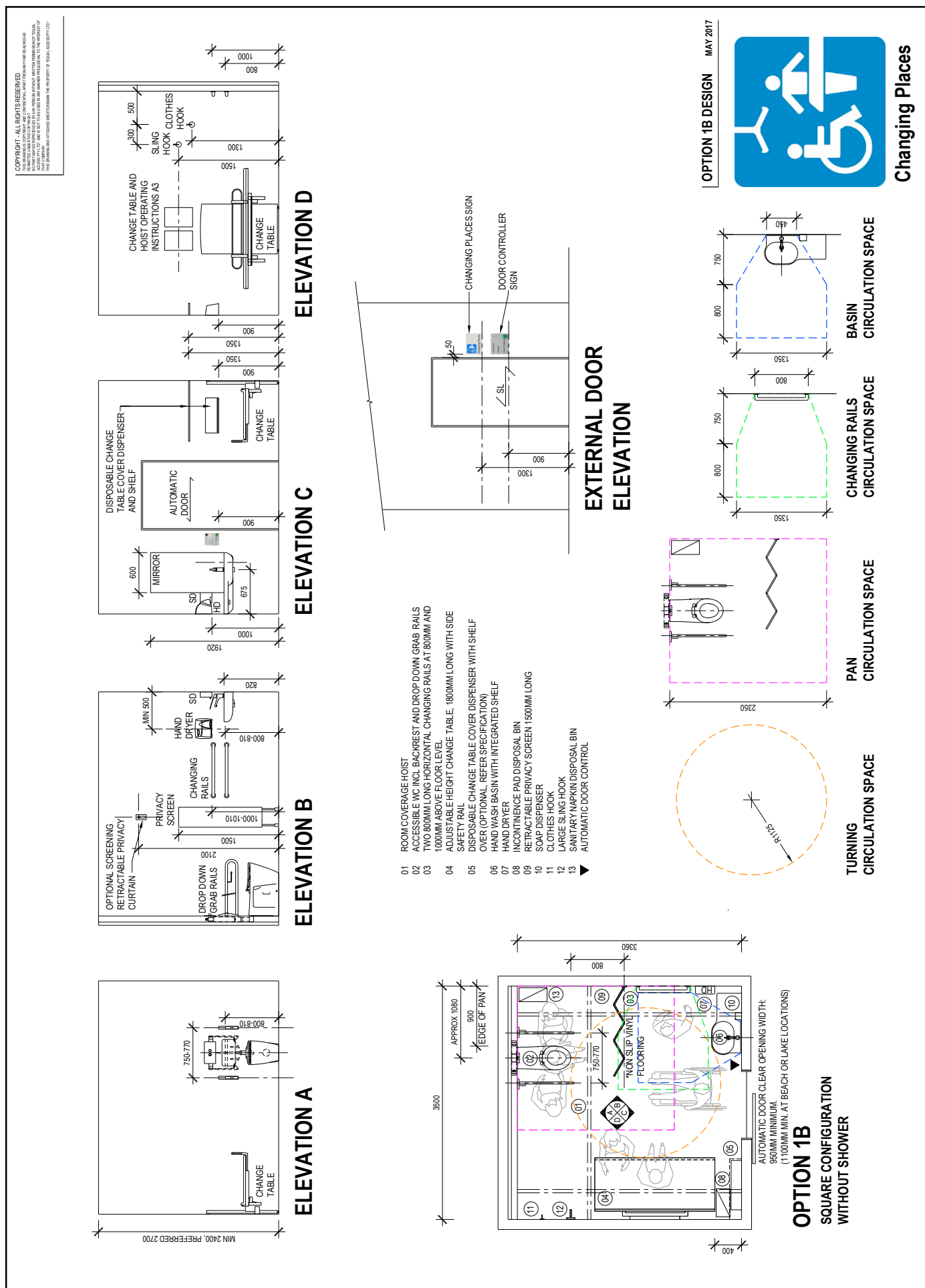
- | | |
|----|--|
| 01 | POOR COVERAGE HOIST |
| 02 | ACCESSIBLE W/INCL BACKREST AND DROP DOWN RAILS |
| 03 | TWO 600MM LONG HORIZONTAL CHANGING RAILS AT 800MM |
| 04 | AND 1000MM ABOVE FLOOR LEVEL |
| 05 | ADJUSTABLE HEIGHT CHANGE TABLE, 1000MM LONG WITH |
| 06 | SIZE SAFETY RAIL |
| 07 | DISPOSABLE CHANGE TABLE COVER DISPENSER WITH SHELF |
| 08 | OVER (OPTIONAL, REFER SPECIFICATION) |
| 09 | HAND WASH BASIN WITH INTEGRATED SHELF |
| 10 | HAND DRYER |
| 11 | INCONTINENCE PAD DISPOSAL BIN |
| 12 | RETRACTABLE PRIVACY SCREEN 1500MM LONG |
| 13 | SOAP DISPENSER |
| 14 | CLOTHES HOOK |
| 15 | LARGE SLING HOOK |
| 16 | SANITARY WIPERIN DISPOSAL BIN |
| 17 | AUTOMATIC DOOR CONTROL |

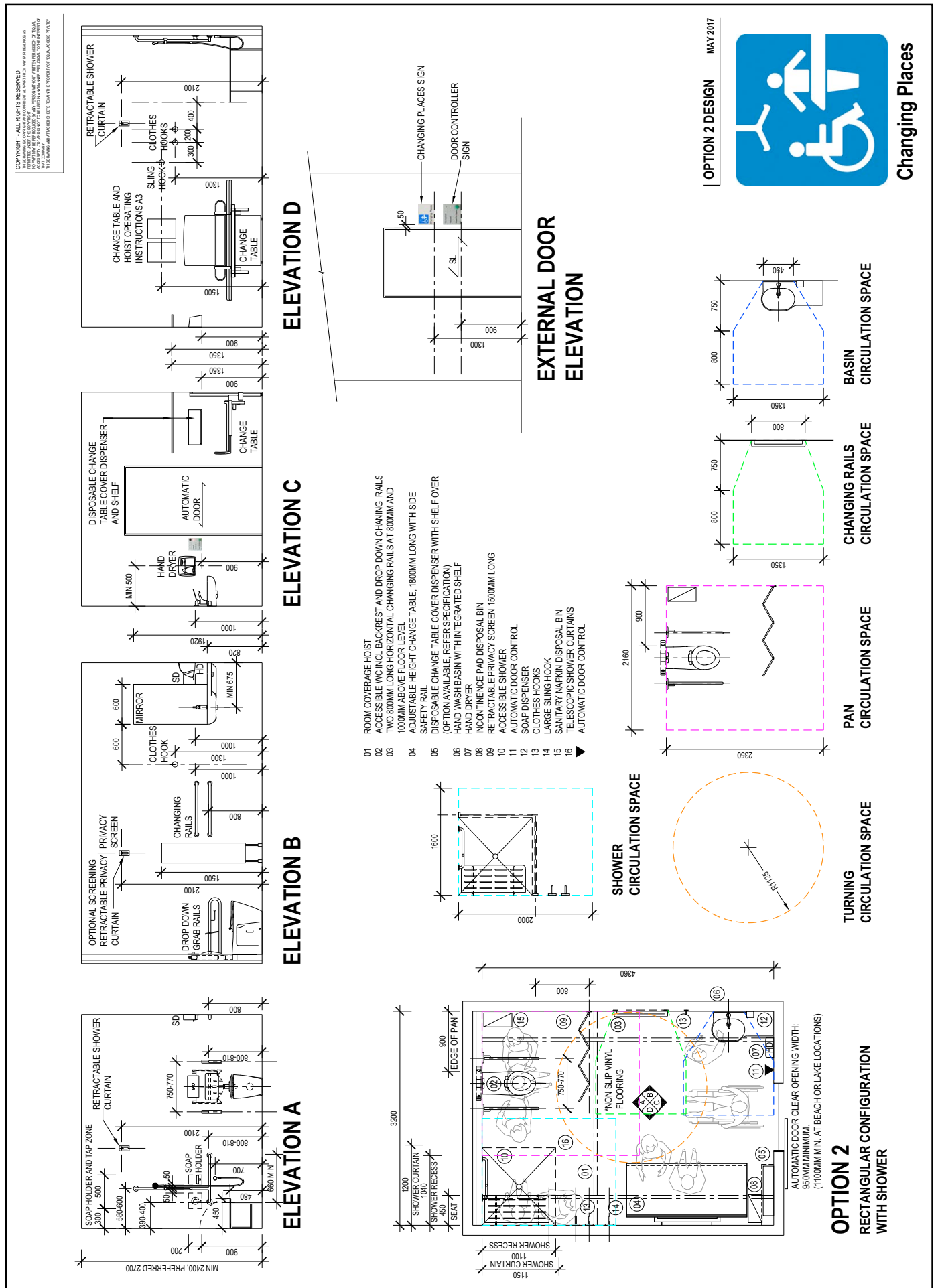


AUTOMATIC DOOR CLEAR OPENING WIDTH:
150MM MINIMUM.
1100MM MIN. AT BEACH OR LAKE LOCATIONS)

OPTION 1A
RECTANGULAR CONFIGURATION
WITHOUT SHOWER







Alternative Layouts

It is recognised that a variety of situations and building constraints may not allow the construction of Changing Places as detailed in one of the option layouts. The information provided in this section is to allow alternative layouts to be developed which still meet the intent and the purpose of Changing Places.

For this reason, circulation spaces have been outlined to define the clear unobstructed circulation spaces that are required around each fitting and fixture in the Technical Standard. Circulation spaces may be overlapped. Where an alternative layout achieves the required circulation spaces and includes hoist coverage of the required areas, the facility can be accredited as a Changing Place.

Unobstructed circulation spaces are to be provided from finished floor level to a height of not less than 2000mm except for the following fittings which are allowed to intrude into the circulation spaces:

- Wash basin
- Drop down grabrails
- Changing rails
- Disposable change table cover, where provided
- Other wall mounted fittings which shall have 900mm minimum height clearance from the finished floor level and a maximum projection of 150mm from the finished wall surface.

The turning area circulation space must be included in all layouts.

The hoist must cover the circulation spaces of the turning area, toilet, change table and shower.

Variations to the requirements

Where a design varies from the requirements detailed in this Technical Guide, an assessment by an Accredited Access Consultant who has completed Changing Places Accreditation Training must be sought if the owner wants to have the facility accredited as a Changing Place.

This assessment will consider if the facility meets the intent and purpose of Changing Places and can be registered as an accredited Changing Place or as an Adult Change Facility. For further details of this process please contact an Accredited Access Consultant who has completed Changing Places Accreditation Training.

Details can be found on our website:

<http://changingplaces.org.au/build-a-toilet/find-a-consultant/>.

We need **changing** **places** to go places



Changing Places design development costs

(As of JUNE 2017)



Disclaimer: These product specifications have been provided as indicative pricing only and are subject to change. The following costings are based on full construction and fit out of Changing Places facilities and not retrofit of an existing space. The products and suppliers listed here are suggestions only – for a list of alternative suggestions please contact info@changingplaces.org.au.

Option 1A

Option 1A - Change Facility				
Item Description	Qty	Unit	Rate	Amount \$
Area				
Base Area	14.30	m2		
Shell Construction:-				
Prepare substrate	14.30	m2	15.00	214.50
Perimeter wall incl. stud frame, insulation, plasterboard, paint & skirting externally				
Frame	39.00	m2	60.00	2,340.00
Insulation	39.00	m2	15.00	585.00
Plasterboard	78.00	m2	40.00	3,120.00
Paint external	39.00	m2	13.00	507.00
Skirting	15.00	m	20.00	300.00
New suspended ceiling (possible existing)	15.00	m2	75.00	1,125.00
Misc works	1.00	Item	58.50	58.50
Shell Construction:-				8,250.00
Option 1 Fit-Out				
Construction:-				
1000 x 2100 high disabled person door, frame & hardware	1.00	No	3,250.00	3,250.00
Automatic release button fully installed	1.00	No	2,750.00	2,750.00
Frame service duct wall	9.00	m2	80.00	720.00
Support frame for change table	6.00	m	80.00	480.00
Ditto for ceiling hoist	9.00	m	245.00	2,205.00
Installation	1.00	Item	1,500.00	1,500.00
Non slip vinyl flooring	13.00	m2	100.00	1,300.00
Coved skirting	14.00	m	25.00	350.00
Vinyl splashback basin/WC	4.00	m2	80.00	320.00
Paint walls	35.00	m2	13.00	455.00
Misc wks	1.00	Item	170.00	170.00
Builders Wks & Finishes				13,500.00

Option 1A - Change Facility				
Item Description	Qty	Unit	Rate	Amount \$
Equipment				
01 - Ceiling hoist	1.00	No	17,000.00	17,000.00
04 - Adjustable change table wide side safety rail	1.00	No	13,000.00	13,000.00
05 - Disposable change table cover dispenser & shelf over	1.00	No	800.00	800.00
Sanitary Fittings				
Safe - Assist TL-850-B - Lift up grab rails	1.00	No	525.00	525.00
Safe - Assist TL-850 - Lift up grab rails with toilet roll	1.00	No	550.00	550.00
Metlam MLR119 - Backrest	1.00	No	450.00	450.00
Bradley 812-001 38mm x 800 horizontal grab rails	2.00	No	150.00	300.00
Dryson DB airblade - AB14	1.00	No	1,650.00	1,650.00
Robrick B270 Sanitary disposal unit	1.00	No	125.00	125.00
Soap dispenser	1.00	No	125.00	125.00
Mirror nom. 900 x 1100 h	1.00	No	650.00	650.00
11 - Clothes Hook	2.00	No	90.00	180.00
09 - Retractable privacy curtain wall mounted - Silentia Screens	1.00	No	3,000.00	3,000.00
Misc fixings	1.00	No	645.00	645.00
Fitments & Equipment				39,000.00
Services				
Sanitary Plumbing				
06 - Opal 920 wall basin & shelf	1.00	No	950.00	950.00
Modina bottle trap	1.00	No	550.00	550.00
Nordic Care Basin Mixer	1.00	No	600.00	600.00
Leda Care cleanflush inwall Invisic Series 11	1.00	No	2,500.00	2,500.00
Soil waste, vents, core holes etc connect to point outside wall	1.00	No	2,675.00	2,675.00
Cold water reticulation & connect to point outside wall	1.00	No	700.00	700.00
HWU	1.00	No	825.00	825.00
Hot water reticulation	1.00	No	550.00	550.00
Testing & Commissioning	1.00	No	650.00	650.00

Option 1A - Change Facility				
Item Description	Qty	Unit	Rate	Amount \$
Electrical Services				
Upgrade existing board	1.00	PS	500.00	500.00
Lighting	1.00	No	2,875.00	2,875.00
Power	1.00	No	1,575.00	1,575.00
Emergency lighting	1.00	No	400.00	400.00
EWIS & fire detection	1.00	No	750.00	750.00
Testing & Commissioning	1.00	No	400.00	400.00
Mechanical Services				
Exhaust ventilation to outlet outside wall	1.00	No	2,625.00	2,625.00
Minor alteration existing AC system	1.00		1,575.00	1,575.00
Testing & Commissioning	1.00	No	300.00	300.00
Services				21,000.00
Builders Site Preliminaries, Supervision, Site Establishment, Insurance, Overheads & Margin				
Builders Site Preliminaries, Supervision, Site Establishment, Insurance, Overheads & Margin	1.00	Item	12,900.00	12,900.00
Contingency Sum				
Design Contingency 5%	1.00	Item	4,175.00	4,175.00
Construction Contingency 6%	1.00	Item	5,900.00	5,900.00
Total Construction Cost Excl. GST				104,725.00
Consultant Fees	0.13	Item	105,225.00	13,153.13
Loose Furniture	1.00	Item		
Signage	1.00	Item	500.00	500.00
Other fees, levies etc	1.00	Item	1,784.07	1,784.07
Project Contingency Sum 10%	0.10	Item	118,378.00	11,837.80
Total Project Cost Excl. GST				132,000.00
Exclusions:-				
GST				
Cost Escalation from June 2017				
Equipment, Computers, Refrigerators, Microwaves etc				
Services Infrastructure from Rm Ext Wall Line incl. Mech. Plant, Electrical Switchboards etc				
Total:				132,000.00

Option 1B

Option 1B - Change Facility				
Item Description	Qty	Unit	Rate	Amount \$
Area				
Base Area	13.70	m2		
Shell Construction:-				
Prepare substrate	13.70	m2	15.00	205.50
Perimeter wall incl. stud frame, insulation, plasterboard, paint & skirting externally				
Frame	39.00	m2	60.00	2,340.00
Insulation	39.00	m2	15.00	585.00
Plasterboard	78.00	m2	40.00	3,120.00
Paint external	38.00	m2	13.00	494.00
Skirting	15.00	m	20.00	300.00
New suspended ceiling (possible existing)	12.00	m2	60.00	720.00
Misc works access hatches etc	1.00	Item	135.50	135.50
Shell Construction:-				7,900.00
Option 1B Fit-Out				
Construction:-				
1000 x 2100 high disabled person door, frame & hardware	1.00	No	3,250.00	3,250.00
Automatic release button fully installed	1.00	No	2,750.00	2,750.00
Frame service duct wall	10.00	m2	80.00	800.00
Support frame for change table	6.00	m	80.00	480.00
Ditto for ceiling hoist	9.00	m	245.00	2,205.00
Installation	1.00	Item	1,500.00	1,500.00
Non slip vinyl flooring	12.00	m2	100.00	1,200.00
Coved skirting	14.00	m	25.00	350.00
Vinyl splashback basin/WC	4.00	m2	80.00	320.00
Paint walls	34.00	m2	13.00	442.00
Misc wks	1.00	Item	103.00	103.00
Builders Wks & Finishes				13,400.00

Option 1B - Change Facility				
Item Description	Qty	Unit	Rate	Amount \$
Equipment				
01 - Ceiling hoist	1.00	No	17,000.00	17,000.00
04 - Adjustable change table wide side safety rail	1.00	No	13,000.00	13,000.00
05 - Disposable change table cover dispenser & shelf over	1.00	No	800.00	800.00
Sanitary Fittings				
Safe - Assist TL-850-B - Lift up grab rails	1.00	No	525.00	525.00
Safe - Assist TL-850 - Lift up grab rails with toilet roll	1.00	No	550.00	550.00
Metlam MLR119 - Backrest	1.00	No	450.00	450.00
Bradley 812-001 38mm x 800 horizontal grab rails	2.00	No	150.00	300.00
Dryson DB airblade - AB14	1.00	No	1,650.00	1,650.00
Robrick B270 Sanity disposal unit	1.00	No	125.00	125.00
Soap dispenser	1.00	No	125.00	125.00
Mirror nom. 900 x 1100 h	1.00	No	650.00	650.00
11 - Clothes Hook	2.00	No	90.00	180.00
09 - Retractable privacy curtain wall mounted - Silentia Screens	1.00	No	3,000.00	3,000.00
Misc fixings	1.00	No	645.00	645.00
Fitments & Equipment				39,000.00
Services				
Sanitary Plumbing				
06 - Opal 920 wall basin & shelf	1.00	No	950.00	950.00
Modina bottle trap	1.00	No	550.00	550.00
Nordic Care Basin Mixer	1.00	No	600.00	600.00
Leda Care cleanflush inwall Invisic Series 11	1.00	No	2,500.00	2,500.00
Soil waste, vents, core holes etc connect to point outside wall	1.00	No	2,675.00	2,675.00
Cold water reticulation & connect to point outside wall	1.00	No	700.00	700.00
HWU	1.00	No	825.00	825.00
Hot water reticulation	1.00	No	550.00	550.00
Testing & Commissioning	1.00	No	650.00	650.00

Option 1B - Change Facility				
Item Description	Qty	Unit	Rate	Amount \$
Electrical Services				
Upgrade existing board	1.00	PS	500.00	500.00
Lighting	1.00	No	2,875.00	2,875.00
Power	1.00	No	1,575.00	1,575.00
Emergency lighting	1.00	No	400.00	400.00
EWIS & fire detection	1.00	No	750.00	750.00
Testing & Commissioning	1.00	No	400.00	400.00
Mechanical Services				
Exhaust ventilation to outlet outside wall	1.00	No	2,625.00	2,625.00
Minor alteration existing AC system	1.00		1,575.00	1,575.00
Testing & Commissioning	1.00	No	300.00	300.00
Services				21,000.00
Builders Site Preliminaries, Supervision, Site Establishment, Insurance, Overheads & Margin				
Builders Site Preliminaries, Supervision, Site Establishment, Insurance, Overheads & Margin	1.00	Item	12,900.00	12,900.00
Contingency Sum				
Design Contingency 5%	1.00	Item	4,100.00	4,100.00
Construction Contingency 6%	1.00	Item	5,900.00	5,900.00
Total Construction Cost Excl. GST				104,200.00
Consultant Fees	0.13	Item	104,200.00	13,025.00
Loose Furniture	1.00	Item		
Signage	1.00	Item	500.00	500.00
Other fees, levies etc	1.00	Item	1,502.50	1,502.50
Project Contingency Sum 10%	0.10	Item	117,725.00	11,772.50
Total Project Cost Excl. GST				131,000.00
Exclusions:-				
GST				
Cost Escalation from June 2017				
Equipment, Computers, Refrigerators, Microwaves etc				
Services Infrastructure from Rm Ext Wall Line incl. Mech. Plant, Electrical Switchboards etc				
Total :				131,000.00

Option 2

Option 2				
Item Description	Qty	Unit	Rate	Amount \$
Area				
Base Area	16.00	m2		
Shell Construction				
Prepare substrate	16.00	m2	15.00	240.00
Perimeter Wall Incl. Stud Frame, Insulation, Plasterboard, Paint & Skirting Externally				
Frame	42.00	m2	60.00	2,520.00
Insulation	42.00	m2	15.00	630.00
Plasterboard	84.00	m2	40.00	3,360.00
Paint external	42.00	m2	13.00	546.00
Skirting	16.00	m	20.00	320.00
New suspended ceiling (possible existing)	14.00	m2	75.00	1,050.00
Misc works	1.00	Item	34.00	34.00
Shell Construction:-				8,700.00
Option 2 Fit- Out				
Construction				
1000 x 2100 high disabled person door, frame & hardware	1.00	No	3,250.00	3,250.00
Automatic release button fully installed	1.00	No	2,750.00	2,750.00
Frame service duct wall	9.00	m2	80.00	720.00
Support frame for change table	6.00	m	80.00	480.00
Ditto for ceiling hoist	9.00	m	245.00	2,205.00
Installation	1.00	Item	1,500.00	1,500.00
Non slip vinyl flooring	14.00	m2	100.00	1,400.00
Coved skirting	15.00	m	25.00	375.00
Vinyl splashback basin/WC	4.00	m2	80.00	320.00
Ditto shower	6.00	m2	100.00	600.00
Upgrade substrate	10.00	m2	40.00	400.00
Waterproof treatment	6.00	m2	50.00	300.00
Paint walls	29.00	m2	13.00	377.00
Misc wks	1.00	Item	123.00	123.00
Builders Wks & Finishes				14,800.00

Option 2				
Item Description	Qty	Unit	Rate	Amount \$
Equipment				
01 - Ceiling hoist	1.00	No	17,000.00	17,000.00
04 - Adjustable change table wide side safety rail	1.00	No	13,000.00	13,000.00
05 - Disposable change table cover dispenser & shelf over	1.00	No	800.00	800.00
Sanitary Fittings				
Safe - Assist TL-850-B - Lift up grab rails	1.00	No	525.00	525.00
Safe - Assist TL-850 - Lift up grab rails with toilet roll	1.00	No	550.00	550.00
Metlam MLR119 - Backrest	1.00	No	450.00	450.00
Bradley 812-001 38mm x 800 horizontal grab rails	2.00	No	150.00	300.00
Dryson DB airblade - AB14	1.00	No	1,650.00	1,650.00
Robrick B270 Sanity disposal unit	1.00	No	125.00	125.00
Soap dispenser	1.00	No	125.00	125.00
Mirror nom. 900 x 1100 h	1.00	No	650.00	650.00
11 - Clothes Hook	2.00	No	90.00	180.00
09 - Retractable privacy curtain wall mounted - Silentia Screens	1.00	No	3,000.00	3,000.00
Bradley shower seat 9555	1.00	No	700.00	700.00
Soap Dish	1.00	No	65.00	65.00
Misc fixings	1.00	No	880.00	880.00
Fitments & Equipment				40,000.00

“I had to lift him up from the ground myself and manoeuvre him into his chair outside the cubicle. I was nearly in tears, as I was so anxious not to drop him, or fall with him, in such an awkward position.”

Option 2				
Item Description	Qty	Unit	Rate	Amount \$
Services				
Sanitary Plumbing				
06 - Opal 920 wall basin & shelf	1.00	No	950.00	950.00
Modina bottle trap	1.00	No	550.00	550.00
Nordic Care Basin Mixer	1.00	No	600.00	600.00
Leda Care cleanflush inwall Invisic Series 11	1.00	No	2,500.00	2,500.00
Shower rail connection & heads	1.00	No	1,000.00	1,000.00
Shower mixer	1.00	No	500.00	500.00
Floor preparation, core hore & screed & regrading to shower waste	1.00	No	1,250.00	1,250.00
Installation of shower for connection	1.00	No	750.00	750.00
Soil waste, vents, core holes etc connect to point outside wall	1.00	No	2,675.00	2,675.00
Cold water reticulation & connect to point outside wall	1.00	No	1,000.00	1,000.00
HWU	1.00	No	825.00	825.00
Hot water reticulation	1.00	No	700.00	700.00
Testing & Commissioning	1.00	No	650.00	650.00
Electrical Services				
Upgrade existing board	1.00	PS	500.00	500.00
Lighting	1.00	No	2,875.00	2,875.00
Power	1.00	No	1,575.00	1,575.00
Emergency lighting	1.00	No	400.00	400.00
EWIS & fire detection	1.00	No	750.00	750.00
Testing & Commissioning	1.00	No	400.00	400.00
Mechanical Services				
Exhaust ventilation to outlet outside wall	1.00	No	2,625.00	2,625.00
Minor alteration existing AC system	1.00		1,575.00	1,575.00
Testing & commissioning	1.00	No	350.00	350.00
Services				25,000.00
Builders Site Preliminaries, Supervision, Site Establishment, Insurance, Overheads & Margin				
Builders Site Preliminaries, Supervision, Site Establishment, Insurance, Overheads & Margin	1.00	Item	14,000.00	14,000.00

Option 2				
Item Description	Qty	Unit	Rate	Amount \$
Contingency Sum				
Design Contingency 5%	1.00	Item	4,500.00	4,500.00
Construction Contingency 6%	1.00	Item	6,500.00	6,500.00
Total Construction Cost Excl. GST				113,500.00
Consultant Fees	0.13	Item	113,500.00	14,187.50
Loose Furniture	1.00	Item		
Signage	1.00	Item	500.00	500.00
Other fees, levies etc	1.00	Item	1,993.75	1,993.75
Project Contingency Sum 10%	0.10	Item	128,187.50	12,818.75
Total Project Cost Excl. GST				143,000.00
Exclusions:-				
GST				
Cost Escalation from December 2013				
Equipment, Computers, Refrigerators, Microwaves etc				
Services Infrastructure from Rm Ext Wall Line incl. Mech. Plant, Electrical Switchboards etc				
Total :				143,000.00

“Not many ordinary people truly understand what it is like being locked up with a person with a disability 24/7. So much of the time is just the two of us. It’s just wonderful if someone drops in, and it’s a chance to talk to someone other than each other.”

Guidelines for the use of slings in Changing Places toilets

Risks associated with providing a sling

The provision of permanent or disposable slings in Changing Places toilets present considerable risks and is not advisable. These risks include:

- cross-infection, which could not be fully eradicated even with the use of chemical wipes;
- difficulties associated with the compatibility of the sling in terms of its size and type; and
- the user and/or carers knowledge of how to use the sling.

Therefore, to minimise any potential risks, users should provide their own sling, which would have the advantage of both the user and carer being familiar with how to use the sling.

Signage and literature should clearly advise people that they need to provide their own sling for health and safety reasons.

Compatibility of slings with the hoist

If users bring their own sling there is the risk that it might be incompatible with the particular model of hoist provided in the toilet. To minimise this risk, the following can be undertaken:

- advertise the model of hoist on all promotional material, including prominent notices in the toilet, which should include pictorial or diagrammatic guidance and easy English text
- advise potential users to check the compatibility of the hoist with their sling by contacting the supplier, manufacturer, prescribing therapist or by calling the Independent Living Centres Advisory Service on (1300 885 886) for advice
- advise potential users which slings are compatible with the hoist provided, which can be obtained from the supplier of the hoist.

Potential users should be notified that if their sling is not compatible with the hoist or if compatibility has not been checked, and there is any uncertainty they should not use the Changing Places hoist.

If this was to occur, potential users should also be advised that they can request an assessment by an Occupational Therapist or Physiotherapist for a sling that meets their needs, and is also compatible with the hoist provided.



Competence of user and carer

There are risks associated with the user and/or carer not being competent in the use of the hoist. To minimise this risk all promotional material including notices in the toilet should state that **only users and carers accustomed to hoisting should use the hoist.**

All information should include pictorial or diagrammatic guidance and easy English text. It should also be made clear that there is no one on site available to assist, as currently available at Travellers Aid, and those requiring assistance should have a support person/carers with them.

The manufacturer's instructions for use of the hoist should also be displayed in a prominent position in the toilet.

Key schemes

It is up to each venue how they manage access to their Changing Places toilet.

Some venues choose to keep the Changing Places toilet unlocked. Other venues may keep it locked as a way to counter vandalism and misuse.

By providing a key operated system you are ensuring the toilet facilities are only used by people who require them, as a result most of these toilets have been found to be in a safe and clean environment.

In Victoria, the Master Locksmiths' Access Key (MLAK) is in use. If you are choosing to have the Changing Places facility locked you will need to install this system.

The Master Locksmiths' Access Key (MLAK) enables people with disabilities to gain 24/7 access to a network of public facilities.

MLAK has been fitted to elevators at railway stations, accessible toilets in Council municipalities and National Parks and in adaptive playground equipment (Liberty Swings) across Australia.

People with a disability are able to obtain a MLAK which will open all toilets, playgrounds and other facilities which are fitted with this specially designed lock.

MLAK are available for purchase from the Master Locksmiths Association of Australasia. To apply for and purchase MLAK online go to www.masterlocksmiths.com.au or telephone (03) 9338 8822.

Local councils should provide the MLAK key free of charge.

Who is eligible?

Eligibility is restricted to people who have a disability or have written authority from:

- a doctor
- a disability organisation
- community health centre
- the owner or management of a building with an accessible toilet on site.



For further information about MLAK keys, please contact the Master Locksmiths Association (03) 9338 8822.

Changing Places

supporters



Supporters of the Changing Places campaign



The Changing Places project is advocating for Changing Places toilets to be installed in all main public buildings across Australia.

Our Industry Supporters are individuals and organisations working in the building industry who have signed a support agreement with Changing Places Australia.

The following organisations have provided various forms of support to the Changing Places initiative in Australia.

If you would like to become a Changing Places supporter please email info@changingplaces.org.au to find out more.

Active Mobility
Annecto
Architecture & Access (Aust)
Association for Children with a Disability
Association of Consultants in Access Australia Inc
Australian Physiotherapy Association
BKK Architects
Braille Tactile Signs (Aust)
Carer Solutions Australia
Carers Victoria
CHS Healthcare
Centre for Developmental Disability Health
Cerebral Palsy Support Network
Children with Disability Australia
City of Melbourne
City of Port Phillip
City of Yarra
Disability Action Group Eastern Region
Disability Justice Advocacy Inc
DORMA Australia
Eastland Shopping Centre
Equal Access Pty Ltd
Envirodome
Enware Australia Pty Limited
Fruitbowl Productions
Functional Access Solutions
Gift Options
Greater Shepparton City Council
Grocon Group
Hede Architects
HLS healthcare
HSPC Disability Access Consultancy
Independence Australia
Independent Disability Services
Institute of Access Training Australia
Knox City Council
Leisure Options

Marillac
Maroondah City Council
Master Locksmiths Association of Australasia Limited
Melba Support Services
Melton City Council
Mode Design
Moodie Outdoor Products
Mornington Peninsula Shire Council
MS Australia – ACT/NSW/VIC
Nadrasca
National Disability Services Victoria
Obvious Access
Options Victoria
Outlook Vic
Ovens & King Community Health Service
Parents Support Network Eastern Region
Peninsula Access Support & Training Inc
Parks Victoria
Pressalit
Pureablue
Radius Disability Services
RuralAccess Gippsland
Scope
Simon Mattiske Building Surveyors & Building Inspectors
Spina Bifida Foundation Victoria
Travellers Aid Australia
Touch By Olivia Foundation
Variety – The Children's Charity (Victoria)
Victorian Chapter Royal Australian Institute of Architects
Victorian Equal Opportunity Human Rights Commission
WC Innovations
Yooralla

For a full list of Changing Places initiative supporters please visit www.changingplaces.org.au/our-supporters

Changing Places Technical Advisory Team

Changing Places would like to acknowledge the support received from its Technical Advisory Team who have kindly offered their time and expertise on a volunteer basis:

Bruce Bromley

Bruce has over 25 years experience in disability access, architectural design, documentation & project management. He formed Equal Access Pty Ltd in 2006 in response to a growing recognition, that whilst businesses were being urged to respond to their obligations under the Disability Discrimination Act, the majority of assistance available was focused almost entirely upon the needs of the individual with a disability without an understanding of the impacts and practicalities for building owners, managers and consultants. Bruce also specialises in evacuation procedures and policy for people with a disability and is a sitting member of the Fire Protection Association Australia, technical and advisory committee TAC17 for emergency workplace evacuation.

Helen Fearn-Wannan

Helen is an access consultant, accredited with the Association of Consultants in Access, Australia and a registered Occupational Therapist with over 15 years experience in the area of building access, design and modification. Helen previously worked with Scope where she had the opportunity to work closely with people with high support needs and the people who support them. It was here that Helen developed the specialist skills of understanding how people, space and technical equipment, including hoists and change tables, all need to work together to provide a change facility that meets everyone's needs with dignity and in safety. Helen works for Architecture & Access and consults at all stages of documentation on a broad range of building projects including community, educational, commercial, health and government projects. She has championed the inclusion of Changing Places facilities in many settings and has recently seen their inclusion in university, community, aquatic, commercial and health projects.

Francesca Davenport

Francesca Davenport is an architect and an accredited member of the Association of Consultants in Access, Australia. She was Chair of the National Access Work Group of the Australian Institute of Architects from 2004 to 2014. In 2015 Francesca joined the team at Architecture & Access after leading Health Science Planning Consultants Disability Access Consultancy for over 11 years.



Association for
Children with a
Disability



Changing Places Transforming Lives



Association for
Children with a
Disability

For further information please contact
Joshua Derezyckj
Advisor, Marketing & Communications
JoshuaD@acd.org.au
ph: (03) 9880 7000
www.acd.org.au

www.changingplaces.org.au



www.facebook.com/ChangingPlacesAustralia



[@ChangingPlaceAU](https://twitter.com/ChangingPlaceAU)