



Specialist Disability Accommodation (SDA)

By CHS Healthcare

 approved



How to ensure SDA compliance

Specialist Disability Accommodation (SDA)

Accommodation for people who require specialist housing solutions and designs



To be NDIS compliant you need to provision for;

1. Constant charge fixed hoist or portable hoist
2. Ceiling or wall mounted XY railing system (also called H Track) providing full room coverage
3. Constant charge fixed hoist or portable hoist with min load capability of 250kg

SDA Infrastructure Requirements

Every CHS Healthcare SDA package adheres to the NDIS Specialist Disability Accommodation Design Standard.. We supply and install everything ourselves to ensure the finished room is fully compliant!

ndis NDIS Specialist Disability Accommodation Design Standard

CEILING HOISTS

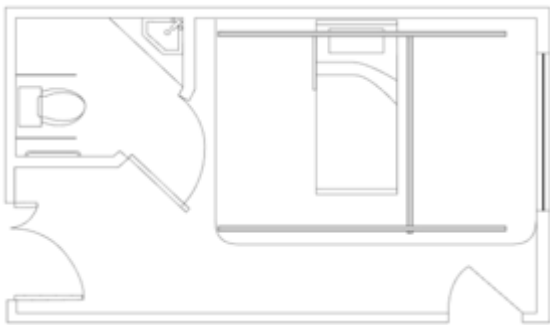
Clause	Design Requirement	Meaning
20.1	Bedrooms shall have a provision for power and inbuilt structure, capable of installation of a constant charge ceiling hoist. The hoist shall be capable of going across the bed and down the bed. Min load capacity of the hoist shall be 250kg. Hoist is to be capable of being either ceiling mounted or wall mounted.	<ul style="list-style-type: none">• Hoist – constant charge fixed hoist or portable hoist with min load capability of 250kg• Track – Ceiling or wall mounted XY (also called H Track) providing full room coverage
20.2	Evidence / Certification document shall be provided for the building structure to be able to provide for a ceiling hoist in the future: <ul style="list-style-type: none">• For design stage assessments, the notation of the requirements on the assessed drawings or specifications is adequate.• For final-as-built stage of SDA certification, the structure shall be inspected and certified by a qualified structural engineer as being suitable for ceiling hoists with minimum load capacity of 250kg.	Providing the relevant support infrastructure for the installation of a ceiling hoist system with the structural integrity required under the standard.



BEDROOM

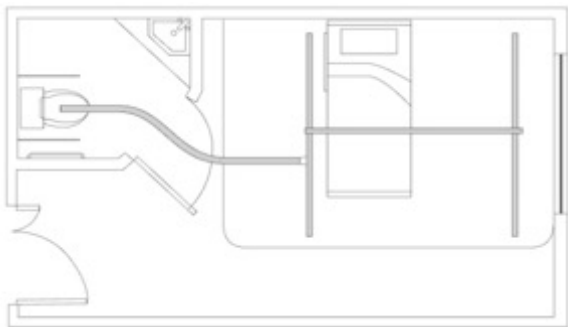
It is important to understand that putting just a rail across the bed is not compliant. The NDIS requirement stipulates the rail system must be a ceiling or wall mounted XY (also called H Track) providing full room coverage.

Please note: You cannot do a room transfer with a wall mounted system. If you want this now or as an option in the future, you must install a ceiling mounted XY system.



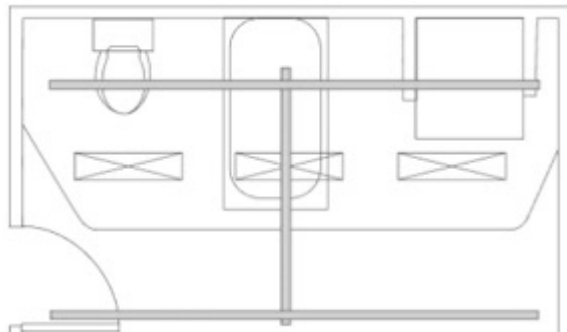
ROOM TRANSFERS

You cannot do a room transfer with a wall mounted system. If you want this now or as an option in the future, you must install a ceiling mounted XY system.



BATHROOM

An XY system is preferable in the bathroom from a safety perspective as it provides for multiple client lift points.



SINGLE STOREY TIMBER FRAME

With a single storey and a man hole you can do the droppers after construction as you have access to the ceiling cavity. Considerations are;

- Load bearing structure mounted in ceiling capable of holding 250kg safe working load
- Consideration of a charge point with safe access. Specifics determined by room layout.



DOUBLE STOREY TIMBER FRAME

With a double storey the first-floor mounting system must be pre-installed prior to plaster as you will have limited access after completion.

- . Considerations are;
- Load bearing structure mounted in ceiling capable of holding 250kg safe working load
- Consideration of a charge point with safe access. Specifics determined by room layout.



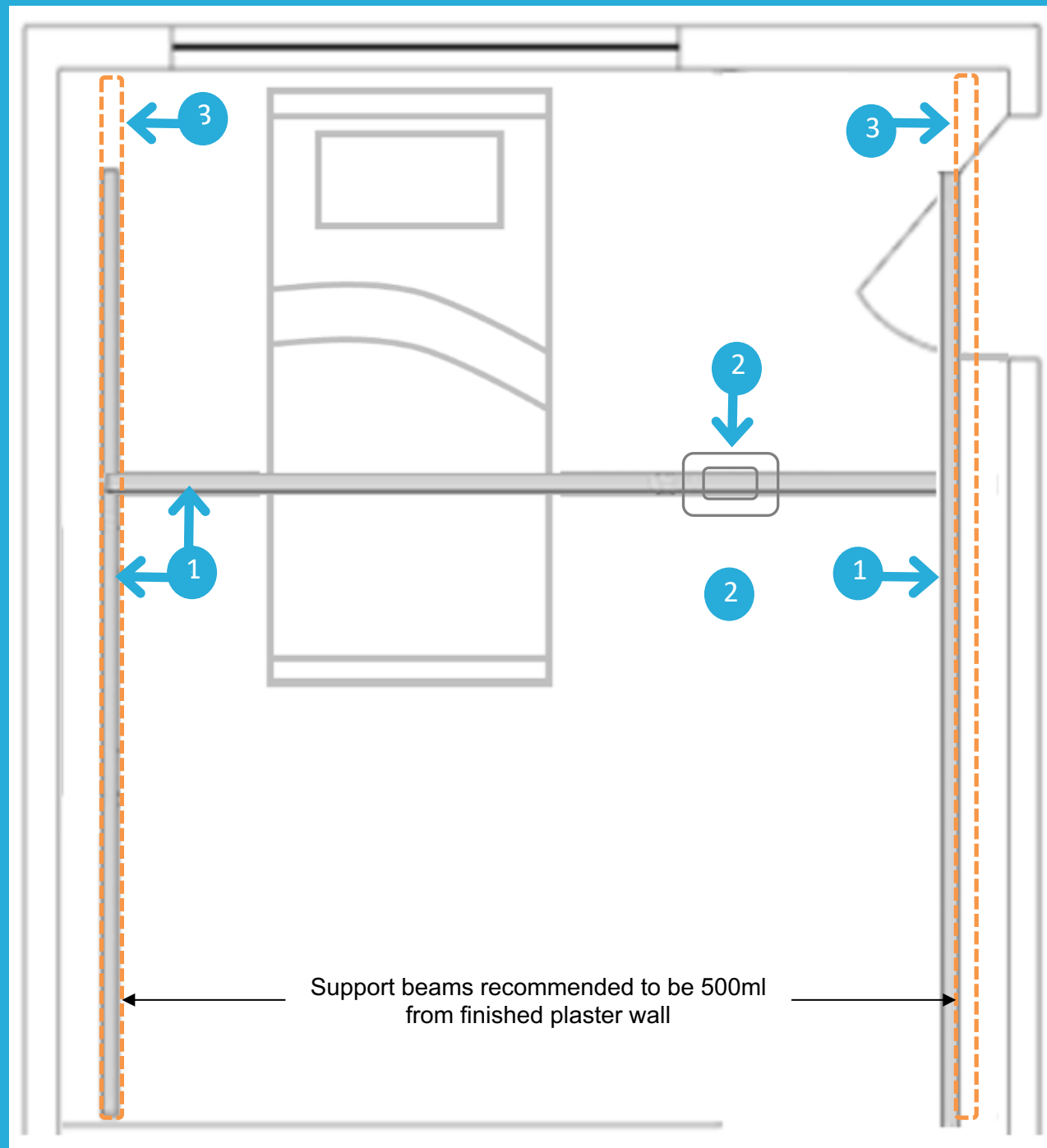
MULTIPLE LEVEL CONCRETE SLAB

Where there is a concrete slab above each room the process is as follows;

- We produce shop drawings initially,
- Pre-plaster we install our proprietary support system and set it just above the finished ceiling line.
- CHS then tests the installation to AS/NZS ISO10535:2011 standards and produce a set of as built drawings.
- The builder is then able to close the ceilings and if or when a participant moves into the apartment and requires a ceiling hoist, we can locate the specific supports and fit a ceiling hoist system to them.



Building considerations – beam support positioning for compliance



Single or double storey timber frame

1

XY Ceiling Hoist Rail System providing full room coverage

2

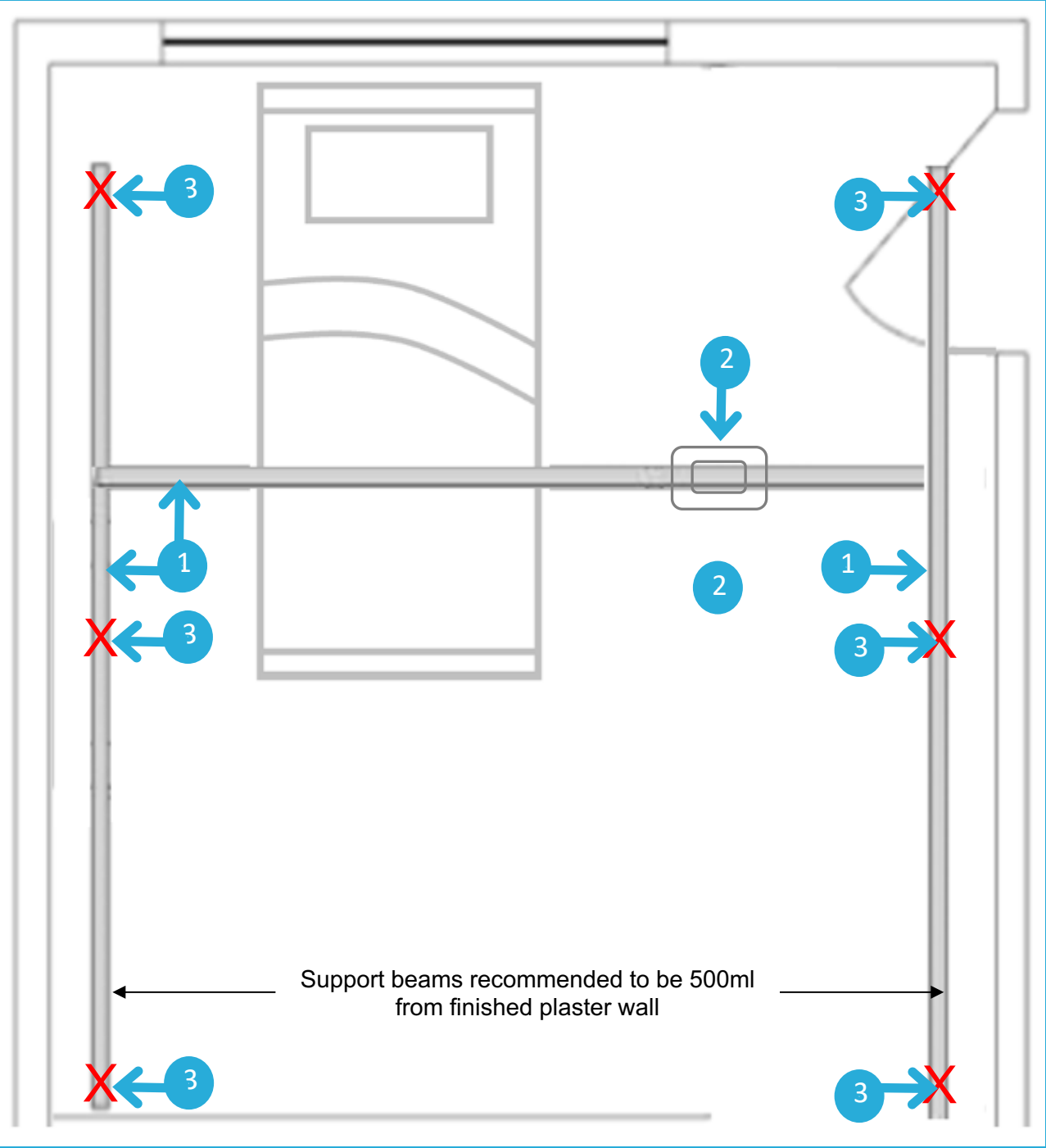
Fixed hoist located on the Transverse rail

3

To support XY rail system installation 2 beams are required. We suggest placement of 500ml on each side from finished plaster wall.

Please note: One beam in the middle of the room is not enough to support the installation of an XY system.

Building considerations – support system positioning for compliance



Concrete Slab

- 1 XY Ceiling Hoist Rail System providing full room coverage
 - 2 Fixed hoist located on the Transverse rail
 - 3 To support XY rail system installation - pre-plaster we install our proprietary support system and set it just above the finished ceiling line.
- CHS then tests the installation to AS/NZS ISO10535:2011 standards and produce a set of as built drawings.
- The builder is then able to close the ceilings and if or when a participant moves into the apartment and requires a ceiling hoist, we can locate the specific supports and fit a ceiling hoist system to them.

Equipment Required For Compliance

Every CHS Healthcare SDA package adheres to the NDIS Specialist Disability Accommodation Design Standard.. We supply and install everything ourselves to ensure the finished room is fully compliant!

FIXED HOIST

The Prism Medical C625 Hoist delivers innovation, affordability and quality. Ceiling hoists dramatically reduce injuries resulting from the handling of patients and residents in both institutional and home care settings. The C625 has been designed with a full set of standard features and can be safely operated by a single caregiver. Built for quiet operation, the C625 provides a smooth and effortless transfer, which safely enhances the working conditions of caregivers. At the press of a button, the C625 will lift up to a maximum of 283kg (625lbs), allowing for the greatest flexibility in the type of patients that can be transferred. For additional flexibility, powered traversing options can be included.



PORTABLE HOIST & TROLLEY

The Etac Molift Nomad is a flexible and user-friendly portable ceiling hoist which is intuitive and easy to operate. Characterised by an innovative design and user friendliness, the Etac Molift Nomad has a unique and attractive design. The curved shape is designed to accommodate the user's head with ample space, while the integrated 4-point yoke provides ultimate safety, comfort and dignity during the lift and transfer.

Ergonomically designed, this large 2 shelved floor trolley with the reacher holder is a must for transporting a portable ceiling hoist unit from room to room.



STANDARD SDA

Optional for standard homes seeking quality and value.

SLIMLINE RAIL

The CHS Slimline rails are used in both linear & XY applications. Lightweight & aesthetically pleasing, this rail is suitable for systems up to 450kg SWL and may be recessed into the ceiling if required. Suits all CHS hoist units, bends, turntables, XY systems and accessories.



PREMIUM SDA

Optional for homes seeking luxury design with no compromise.

FINELINE RAIL

The thicker profile of the Super Rail allows for extended spans between supports making it suitable for XY traverse rails and wall mount situations. Reduced depth provides a more aesthetically pleasing finish without loss of lift height. For bracket details, see later in this section



Product Options

Product	Description	Code		Safe Working Load
NDIS QUALIFICATION				
Fixed Hoist	Prism Medical C625 fixed hoist	323149		283kg
Portable Hoist & Trolley	Etac Molift Nomad portable hoist	NOMAD 255		250kg
	Large Floor Trolley	LFT01		
Slimline Rail	CHS slimline rail – linear & XY applications	LSL02-072		450kg
Fineline Rail	CHS fineline rail – built into closed ceilings	LFL02-072		450kg
OPTIONS				
Baths	AVERO Comfort	AC 001		250kg
	AVERO Motion	AC 002		210kg
Slings	General purpose	CHS GP		300kg
	General purpose with head support	CHS GPHS		300kg
	Care toileting sling	CHS CTS		300kg



More About CHS Healthcare

Leading manufacturer and supplier of patient lifting and handling solutions.

01

DESIGN

CHS is experienced in the complex process of designing a ceiling hoist system that will be beneficial for both the disabled and their carers.

02

SUPPLY

CHS specializes in the supply of patient lifting rail systems, portable & fixed hoists, floor lifters, change tables, therapy baths, privacy screens and bariatric solutions.

03

INSTALLATION

CHS has a trusted network of fully qualified & insured installation technicians which ensures your rail system is installed to safety requirements & will perform to optimum efficiency every time.

04

TRAINING

We will work with you to ensure your staff are fully trained in the use of our equipment. We have enabled our business to provide training in a live streaming format and / or pre-recorded videos on yours our platform.

05

MAINTENANCE

CHS healthcare supports, educates and adheres to Australian and International Standards for your safety and peace of mind, and we offer exclusive CHS Care Plans for preventative maintenance.

Australian Owned & Operated



An Australian family owned and operated company providing patient lifting and handling solutions since 1997.

“We unpack the specific details around SDA requirements and what they mean for your project including structural requirements, and design elements so that your SDA home is able to be certified by an Accredited SDA Assessor, is future proofed and participant ready.”

Brett Lindqvist, Managing Director

A registered provider of



Case Studies

From small to medium and large developments, we have been helping more venues across Australia become accessible for everyone. Here are a few examples of our SDA installations.



PROJECT FRIDAY

CHS Healthcare is working with Project Friday on a number of projects with the provision of hoist and rail systems. Their aim is to bring development and design standards to the way SDA is built.

As an NDIS registered provider, Project Friday believes it is critical that the physical surrounding has been designed with the participant’s mobility and functionality in mind. In essence, providing independent living solutions without sacrificing the overall architectural design.



ABILITY SDA

Ability SDA (Specialist Disability Accommodation) was established in 2016. The family-owned business specialises in building high-quality housing for Australians with disabilities. Their view is for too long, many people have had to live in accommodation facilities not adequately suited to their specialised needs. Since their inception CHS Healthcare has assisted Ability SDA with over 30 apartments.

When 68-year-old Alan Williams moved into his new Ability SDA apartment in Gosford Central he said “I’ve got a beautiful open-plan apartment with two bedrooms. I’ve got an overhead hoist which I’ve never had before. I’ve got a beautiful, big kitchen that’s set at the right heights for me, and I’m on the 11th floor – I get a magic view”.



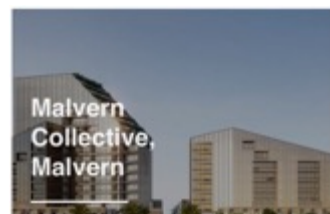


SUMMER HOUSING

CHS Healthcare has assisted Summer Housing in over 20 projects delivering in excess of 200 apartments.

Summer Housing's aim is to deliver better quality of life, increased independence and reduced lifetime care costs for people with disability and complex care needs.

They do this through the provision of high quality and well-located housing, incorporating appropriate design, technology and support provision with companies like CHS Healthcare.



How We Can Help You

We understand the market and have a proven ability to help designers, planners and the construction industry navigate the Specialist Disability Housing design and construct process.



1. Consultation

We'll talk through all of your requirements, timelines, and arrange site visit if needed.



2. Plan & Design Assistance

We will provide all of the tools required (CAD & BIM files) to assist with your drawings and layouts.



3. Installation

We specify all the equipment and our experienced team install on a date that suits you.



4. Education

How the equipment works.



5. Maintenance

As part of our service contract, our engineers will perform regular tests.



1300 789 420

Sales@chshealthcare.com.au

www.chshealthcare.com.au

MELBOURNE

1 Technology Circuit
Hallam, Victoria, 3083

1300 789 420

SYDNEY

41 Edward Street
Riverstone, NSW, 2765

1300 789 420

BRISBANE

17 Machinery Street
Darra, QLD, 4076

1300 789 420