

Who Are CHS Healthcare

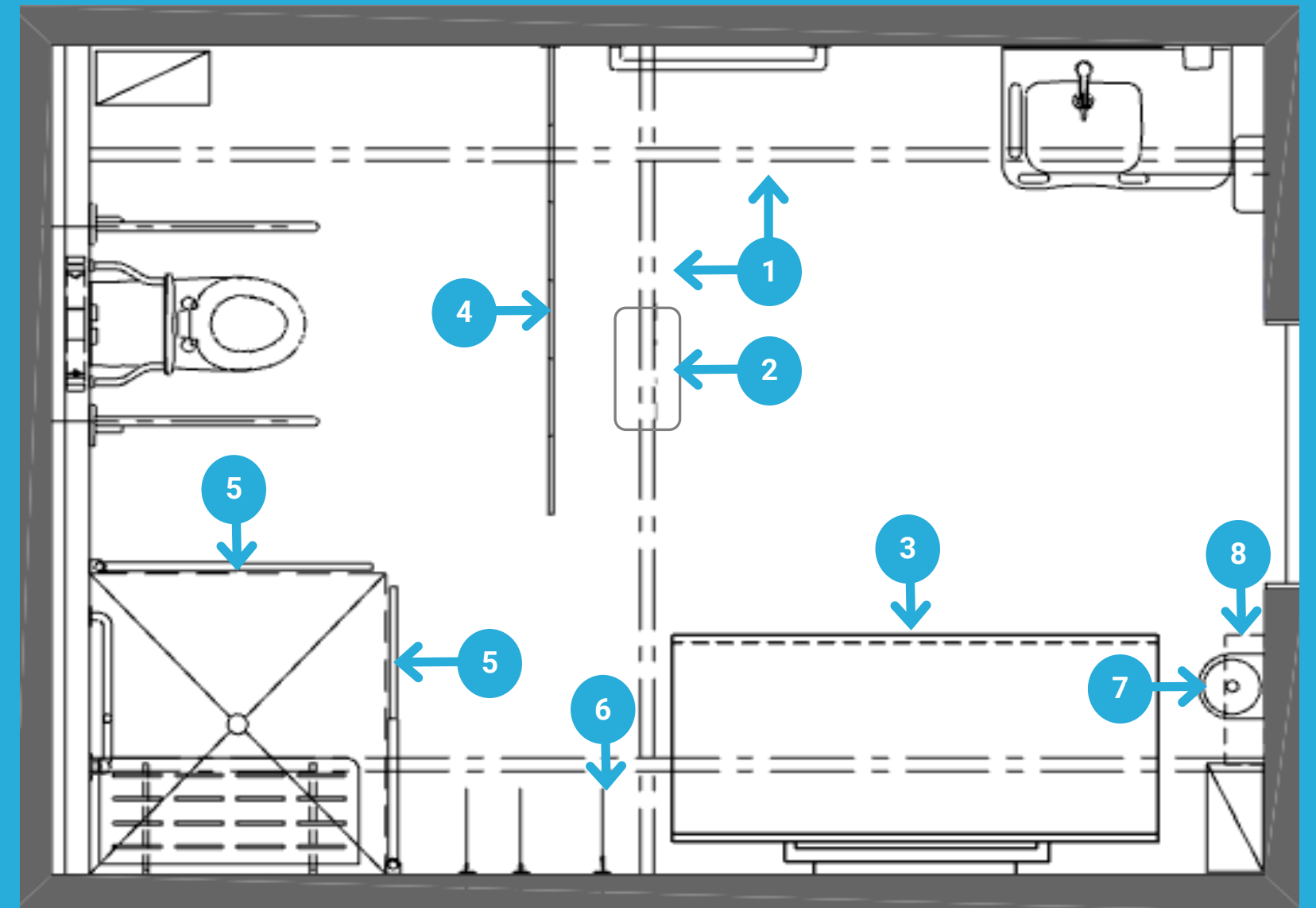
CHS Healthcare is a leading provider of quality and innovative patient transfer solutions and hygiene systems to the healthcare industry in Australia.

- CHS Healthcare installed the first Changing Places facility in Ringwood Lake Park, Victoria in 2014.
- With our expert knowledge of the healthcare industry, we have been involved in over 70% of accredited Changing Places facilities.
- Trusted by more than 60 Councils across Australia to help deliver Changing Places projects.





Example Floor Plan



- | | | | |
|---|-------------------|---|-----------------|
| 1 | Hoist rail system | 5 | Shower curtains |
| 2 | Fixed hoist | 6 | Sling hook |
| 3 | Changing table | 7 | Wipe dispenser |
| 4 | Privacy screen | 8 | Washroom shelf |

Changing Places Specifications

| Ceiling Hoist & Track System | |
|----------------------------------|--|
| Hoist coverage | Coverage to be provided over the turning circle, toilet, change table & shower seat. |
| Vertical height | Clear unobstructed vertical height from the finished floor level to the underside of the moving transverse rail of 2100mm (achievable with a ceiling height of 2400mm in most room layouts). Note: A ceiling height of 2700mm is preferred and will provide 2400mm clearance to the underside of the transverse rail. |
| Hoist System | Two fixed parallel rails & one moving transverse rail (also called XY system or gantry). |
| Hoist type | Fixed hoist. |
| Safe working load | SWL equal to or greater than 180kg Be capable of sustaining a static load of not less than 1.5 times the rated load |
| Charge function | Constant in-line charging shall be provided. |
| Hoist spreader bar | Hoist spreader bar is to extend from the hoist down to no more than 300mm from the floor level |
| Ceiling fittings | Recessed ceiling fittings (lights, fans, sprinklers) or the hoist tracks to provide sufficient clearance under the fittings to allow the free movement of the hoist track |
| Change Table | |
| Height range | A wall-mounted, motorised height adjustable change table shall be provided. As a minimum, it shall be adjustable between the heights of 400mm and 900mm above finished floor level. |
| Dimensions | Table is to be 700mm wide x 1800mm long minimum. |
| Safety | Side safety rail that can be folded up or down easily. |
| Load capacity | Weight loading capacity to be a minimum of 180 kg. The safe working load of the change table shall be equal to the safe working load of the hoist. |
| Privacy Screen & Shower Curtains | |
| Privacy screen | A wall mounted privacy screen to be provided and located no less than 900mm from the front or edge of the toilet pan |
| | Minimum height to achieve 1400mm |
| | Minimum 1750mm long, or as needed to provide sufficient screening for a person seated on the toilet pan from view of the doorway. |
| Shower curtains | Two pull out, swing away, wall mounted curtains are to be provided. |
| Fixtures & Fittings | |
| Shelf | A shelf for storage of supplies by users of the room shall be provided adjacent to the change table; |
| Sanitizing wipes dispenser | Sanitary wipes for cleaning of the table shall be provided adjacent to the change table. The outlet for the dispenser is to be located at 900-1200mm above the floor level. |
| Sling hook | One large sling hook shall be installed beside the changing table at 1500-1550mm above the finished floor level |
| | Sling hooks are to extend 50-75 from the plate of the hook |
| | The hook shall be located within 500mm of the end of the change table. |

For more detailed specifications see the full [Changing Places Design Specifications Document](#)

Changing Places Products

Every CHS Healthcare Changing Places package includes all required equipment as standard. We supply and install everything ourselves to ensure the finished room is fully compliant!

ASTOR INVINCIBLE CHANGE TABLE

The Astor Invincible height adjustable changing and showering table has been designed to withstand robust treatment in public settings yet provides a very comfortable and practical solution for the complex needs of daily caregiving. The height of this wall-mounted changing and showering table can be easily adjusted up or down to minimise carer strain.

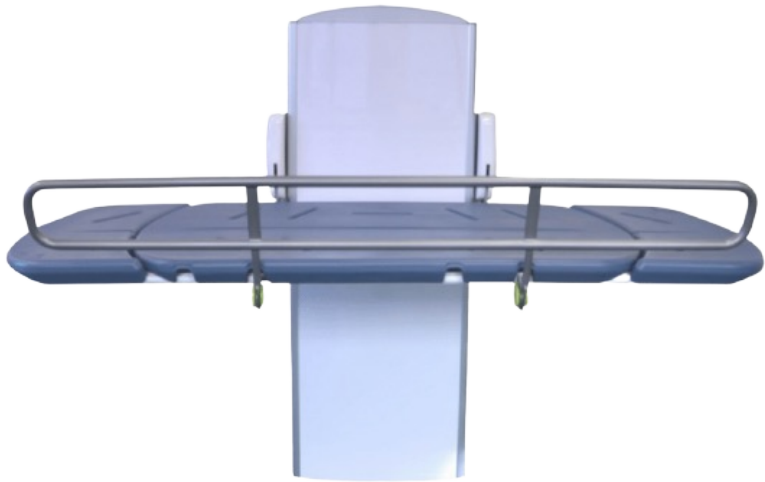


Designed specifically to use in Changing Places public environments

[Watch Video](#)

GRAFFITI PROOF

- The first and only changing table designed specifically to use in a Changing Places Toilet and public or shared environments.
- Cut resistant flexible stretcher 1800mm x 800mm / 70.9” x 31.5”.
- Emergency stop button.
- Safe working load (SWL) 200kg / 441 lbs
- IK10 tested product which is the highest level of rated protection against impact.
- Split guard independent operation to improve care, comfort & access.
- No exposed wires / fixings / controls.
- Battery back up in case of power outage.
- Vandal proof up & down buttons integrated into wall unit and stretcher.



CTX CHANGING TABLE

The CTX is the ultimate wall mounted changing table that allows the complex needs of daily care giving to be conducted in a comfortable and relaxed manner for both the care giver and cared for.

The height of the bed can be easily adjusted up or down via the handset, which also controls the integrated lighting. This combines to give a calm and relaxed environment for transferring and changing. Tilting head rests also offer enhanced comfort. The CTX changing tables are designed to withstand high usage in wet and humid environments with the inclusion of stainless-steel parts, a durable and comfortable molded polyurethane bed with drain holes and an integrated water collection tray.

CTE CHANGING TABLE

The Astor-Bannerman Nivano range of wall mounted height adjustable changing tables have been a popular choice in disabled bathrooms and Changing Places for many years. This is because they are easy to use, comfortable, reliable and look great in any room without having a clinical feel. It is simple to operate from a handset control and comes in a range of sizes from 1000mm right up to 1900mm to suit both paediatric and adult applications.

The durable stretcher material is comfortable as well as quick and easy to clean, saving precious time. This, along with part stainless steel construction means the CTE2 will give many years of worry-free use, even in wet and humid or multi-user environments



PRISM MEDICAL C450 FIXED HOIST

The Prism Medical C450 Hoist delivers innovation, affordability and quality. Ceiling hoists dramatically reduce injuries resulting from the handling of patients and residents in both institutional and home care settings. The C450 has been designed with a full set of standard features and can be safely operated by a single caregiver. Built for quiet operation, the hoist provides a smooth & effortless transfer. The C Series will lift up to a maximum of 205kg, allowing the greatest flexibility in the type of patients that can be transferred. For additional flexibility, powered traversing options can be included.



- Smallest Hoist of its class which allows for 180mm of additional lifting height
- Quick lifting speed
- Emergency pull cord
- Modular design for simplified maintenance
- Quick charge batteries for reduced service time
- Audible low battery indicator & visual battery/ charge level display
- Digital readout
- Auto shut off when not in use, to save battery life
- 2.2 strap vertical movement allows you to easily lift from the floor
- Pneumatic Hand Controls – 100% waterproof
- Manual option – for emergency raising or lowering
- Available with **constant** charge option (**this is required for Changing Places**)



CHS FINELINE RAIL

CHS Fineline rails are designed to be built into closed ceilings, giving a beautiful integral appearance. This concealed lightweight rail is suitable for systems up to 450kg SWL and suits CHS’s full range of fixed and portable hoist units. Neat molded access panels at rail end provide for hoist servicing needs.

CHS SLIMLINE RAIL

The CHS Slimline rails are used in both linear & XY applications. Lightweight & aesthetically pleasing, this rail is suitable for systems up to 450kg SWL and may be recessed into the ceiling if required. Suits all CHS hoist units, bends, turntables, XY systems and accessories.



CHS SUPER RAIL

The thicker profile of the Super Rail allows for extended spans between supports making it suitable for XY traverse rails and wall mount situations. Reduced depth provides a more aesthetically pleasing finish without loss of lift height. For bracket details, see later in this section



ROPIMEX RTS TELESCOPIC ARM

This model is a telescopic arm that has the ability to swivel ensuring you won't trip over anything hanging on the wall. This is the best reason for the use of telescopic arms - the screening system is only there when it is needed. Following use of the screen, simply push together and turn toward the wall. Your room is then restored to its usual appearance. Ropimex RTS extends up to 2100mm. For longer rail or connections, contact us.

ROPIMEX CURTAINS – TCS TREVIRA FABRIC

Ropimex® curtains TCS Trevira are made from Trevira®CS / Trevira®CS BIOACTIVE. They have passed every fire test world wide, for that extra safety. They are ideal for protecting privacy in healthcare and care facilities, as attractive room partitions and as a room divider covering.



ROPIMEX PRIVACY SCREEN

The Ropimex RFW can be used flexibly as a screen or partition in a hospital and or care facility. This robust and impact-resistant folding wall can be brought into position swiftly and just as quickly returned to its storage position on the wall. The number of leaf sections can be extended later as required.



CHS WIPE DISPENSER

The CHS wipe dispenser is a wall mounted, super sleek, streamlined and fully functional in various applications. The stainless steel wall mounted stand works with many equipment wipes and is easy to refill. The unique sturdy Silicon valve allows a single wipe to be dispensed minimising wastage as wipes are dispensed.

WASHROOM SHELF

The Bradley wall mounted Stainless steel shelf is extremely versatile and suitable for nearly any environment. Installation for the Bradley 756A shelf is extremely simple. Surface mount and secure to wall with screws. Designed with burr-free bevel edges



SLING / COAT HOOK

Stainless steel sling / coat hook with a concealed fix

Case Studies

From football stadiums, shopping centres and famous Australian Icons, we have been helping more venues across Australia become accessible for everyone. Here are a few examples of our Changing Places installations.



CHADSTONE SHOPPING CENTRE

The facility, located near Chadstone’s fresh food precinct, is designed in accordance with Changing Places Australia guidelines and specifications to ensure it meets the needs of people who will be using the amenities, including a change table and hoist.



“

"We’re pleased, on the eve of International Changing Places Day, we can now offer our customers and the broader community Changing Places at Chadstone, which will help make our centre more accessible to people with disabilities as well as their carers".

JOSEPH SEIDLER
**VICINITY REGIONAL DEVELOPMENT
MANAGER**

”



COLLINS PLACE – MELBOURNE CBD

Collins Place, together with the Department of Health and Human Services and the assistance of CHS Healthcare have come together to deliver the first 24/7 Changing Places bathroom facility in Melbourne's CBD. Changing Places is a new 24/7 accessible facility, designed to help serve the needs of all community members.

The new Changing Places facility is located on the Ground Floor, accessible by the Sofitel Driveway.

With all the features of a Changing Place, including an adjustable adult size change table, a track ceiling hoist system and central toilet with grabrails, the new Changing Place opens up Collins Place to everyone.



“

"One in five Australians has a disability. That’s a huge part of our population – which means it’s also a huge part of the market. We definitely have plans for more. I’d love to have one in every building. For me, it is creating spaces people love, that they want to be in, and being attractive to the broadest possible customer base. It’s good for us, it’s good for Melbourne, and it’s good for the community”.

CHRIS NUNN
**HEAD OF SUSTAINABILITY AT
AMP CAPITAL REAL ESTATE**

”

OPTUS STADIUM - PERTH

CHS Healthcare assisted the Western Australian Government with the incorporation of two Changing Places facilities available inside the Perth Optus Stadium designed to be secure and provide a safe place for people with disabilities, or those who require extra space and assistance for carers or wheelchairs to use specialized bathroom equipment.

There was also a Changing Places facility outside the stadium. So overall there are now 3 Changing Places toilets – The first stadium in Australia to have more than one. Features include:

- Height adjustable adult-sized changing bench
- Mobile hoist system
- Space for a user and up to two carers
- Electric doors

“

"There are three extra large toilets for people requiring specialised assistance. I'd like to think its better than most of the places in the southern hemisphere that I've been to, and potentially the northern hemisphere too".

CRISPIN ROBERTS

MEMBER OF THE STADIUM’S ACCESS AND INCLUSION GROUP

”

How We Can Help You

We understand the market and have a proven ability to help designers, planners and the construction industry navigate the complex Changing Places design and construct process. CHS Healthcare is proud to have been involved in the Changing Places initiative since its introduction to Australia in 2012. We are actively involved on a national level, supplying and installing equipment in every state of Australia, and have been involved in more than 70%* of all accredited facilities.. Our expertise in this field is valued by clients and Changing Places alike, resulting in CHS Healthcare being crowned 'Industry Champions'.



1. Consultation

We'll talk through all of your requirements, timelines, and arrange site visit if needed.



2. Plans and Designs

All drawings and layouts are created by our architectural engineer, in CAD and BIM. We also arrange all the building work.



3. Installation

We specify all the equipment and our experienced team install on a date that suits you.



4. Education

How the facility works.



5. Maintenance

As part of our service contract, our engineers will perform regular tests.

