



Imagine...
no boundaries



Patient Lifting Solutions

PRODUCT INFORMATION



Table of contents

<i>Introduction</i>	3
<i>Quality, Innovation, Safety</i>	5
<i>Providing you with the best tool for loving care</i>	6
<i>Architects & builders</i>	8
<i>PLS Ceiling Hoists</i>	10
<i>PLS Hoist Accessories</i>	12
<i>PLS Rail components</i>	14
<i>PLS Rail Profiles, Curves & Trolleys</i>	16
<i>Technical details</i>	20
<i>Detailed specifications about PLS Ceiling Hoists, Hoist Accessories, Traverse Trolleys and Rail-Fixings.</i>	
<i>Cryo-Lift</i>	28
<i>Bodyhoist</i>	29

A word of introduction

Have you ever had to work with something that you know could be so much better? Frustrating isn't it?

Working as a technician on servicing and installing patient lifting systems in the early 2000's I witnessed firsthand the shortcomings of products that were available to the market.

From this stemmed the desire to make better, more reliable products.

A more comfortable experience for patients and optimal ease of use for caregivers. It is this motivation that drives us still.

the desire to make better, more reliable products

From the start of development in 2008, the founding of PLS in 2011 to the flourishing company with a multitude of international distributors we are today it is this focus that customers reap the benefits of. Along the way we harnessed the power of innovation, such as with our unique PLS SENSOR-MOTION technology that enhanced the way patients are transferred. We optimized our internal processes which was awarded with our ISO13485

certification. In this brochure you'll find new and exciting products that are a testament to our efforts to make a step towards the healthcare of tomorrow. But at the root of it all is still that same motto.

We can do better and we will.

Marcel van den Brandt
CEO





Quality, Innovation, Safety

A new ceiling hoist system, it's a big deal.

At PLS we understand why you want the best deal for your facility. This doesn't just stop at an attractive price point, although we are happy to provide that as well. Let us take you through why we believe we have the best offer for you.

Quality is at the heart of what we do. We have a passion for durably engineered components that are easily serviceable. This keeps maintenance costs down but also prevents undesirable downtime situations in which ceiling hoist can't be used.

An unprecedented 5 year warranty shows our faith in the quality of our products. This all combines to provide the lowest Total Cost of Ownership in the market.

Our rigorous focus on quality control and certified ISO13485 management system ensures that our products arrive on time and are free from issues. All our products are manufactured by highly skilled technicians in our brand new facility in the Netherlands.

We have a proven safety record that gives you confidence that no harm can come to patients. Applying a risk based approach and an effective and certified management system we have left no stone unturned to make a product that is inherently safe to use.

PLS was born an innovator and we are committed to remain just that. We were the first with our sensor motion technology and the new AR-200P portable ceiling hoist is the latest example of our strive for ingenious products. We continuously invest in research & development to keep bringing new and exciting state of the art solutions to the market.

With the 3D printing solutions being more widely available nowadays, we managed to push innovation even further by producing and prototyping smaller parts in batches less fit for mass-production. This saves a lot of time in producing a better quality product. These solutions are part of what keeps PLS one step ahead of the curve.

This all combines to provide the lowest Total Cost of Ownership in the market.





Providing you with the best tool for loving care

The PLS ceiling hoist and rail system have been developed with the goal to create the smoothest system on the market. This means you can effortlessly move the patient from place to place. A gentle push on the spreader bar moves the patient through the room. For even more comfort a driven variant is available that pushes the patient motorized through the rail at the push of a button.

A system that is easy to use is a good system. The hand control has been designed with simplicity in mind. It comfortably fits your hand and features no more buttons than needed. No nasty corners and being waterproof means a simple wipe down ensures a clean hand control.

A swift lifting speed with slow start and stop has patients feeling at ease while still making sure that you can get the transfer done quickly and safely. PLS hoists can be easily combined with a range of different slings and accessories so the best fitting solution is always possible.

100% Ease of Use

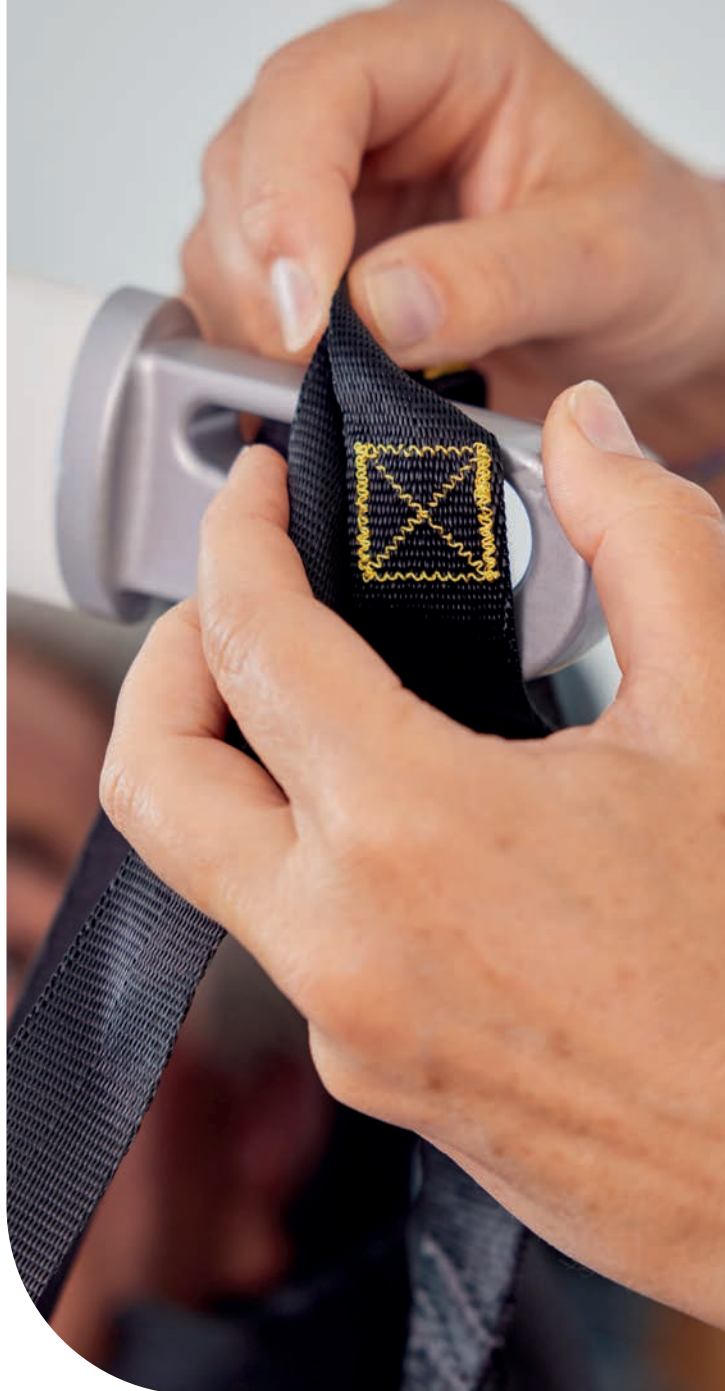
Clips or loops, electrical or manual spreader bar, configure it the way that works for you. Our special central suspension point makes changing out of spreader bars easy and foolproof. Superclear instructions are in our user manual or can be seen in our 'how to' videos on youtube. You'll have peace of mind that the patient is secure at every transfer.



All components of the PLS rail system are equipped with the unique Sensor-Motion technology. Because of this technology components like our Turntable, Track Switch and Coupling are extremely easy to operate. No wall switches or rail contacts but smart sensors detecting the hoist and activate a motion to change direction or connect segments of track. Effectively this means not only more comfort but also more attention for the patient instead of operating a track system.

Why a ceiling hoist?

A ceiling hoist takes up no floor space and is always out of the way when you don't need it, yet easily ready where you want it to be when you do need it. No more chairlegs or tight spaces you need to maneuver around! A ceiling hoist is also the most comfortable way of transfer for your patients while at the same time protecting your back from injury. Let PLS ceiling hoists do the heavy lifting so you can focus on giving that personal care that patients enjoy.





Architects & builders

Designing and building the care facilities of the future.

Ceiling hoist systems are intertwined with the structure of the building they are used in. PLS proactively supports architects and builders in their efforts for a seamless integration of mobility solutions in newbuilds and renovation projects.

✔ **Easy to reach for support.**

A real person that picks up the phone when you call.

✔ **A collection you can draw from.**

We can provide technical drawings, product renders, CAD & BIM files.

✔ **Flexibility in tailored solutions.**

We use a carefully selected network of suppliers and are flexible enough to provide tailored solutions to specific situations.

✔ **Sleek and discrete appearance.**

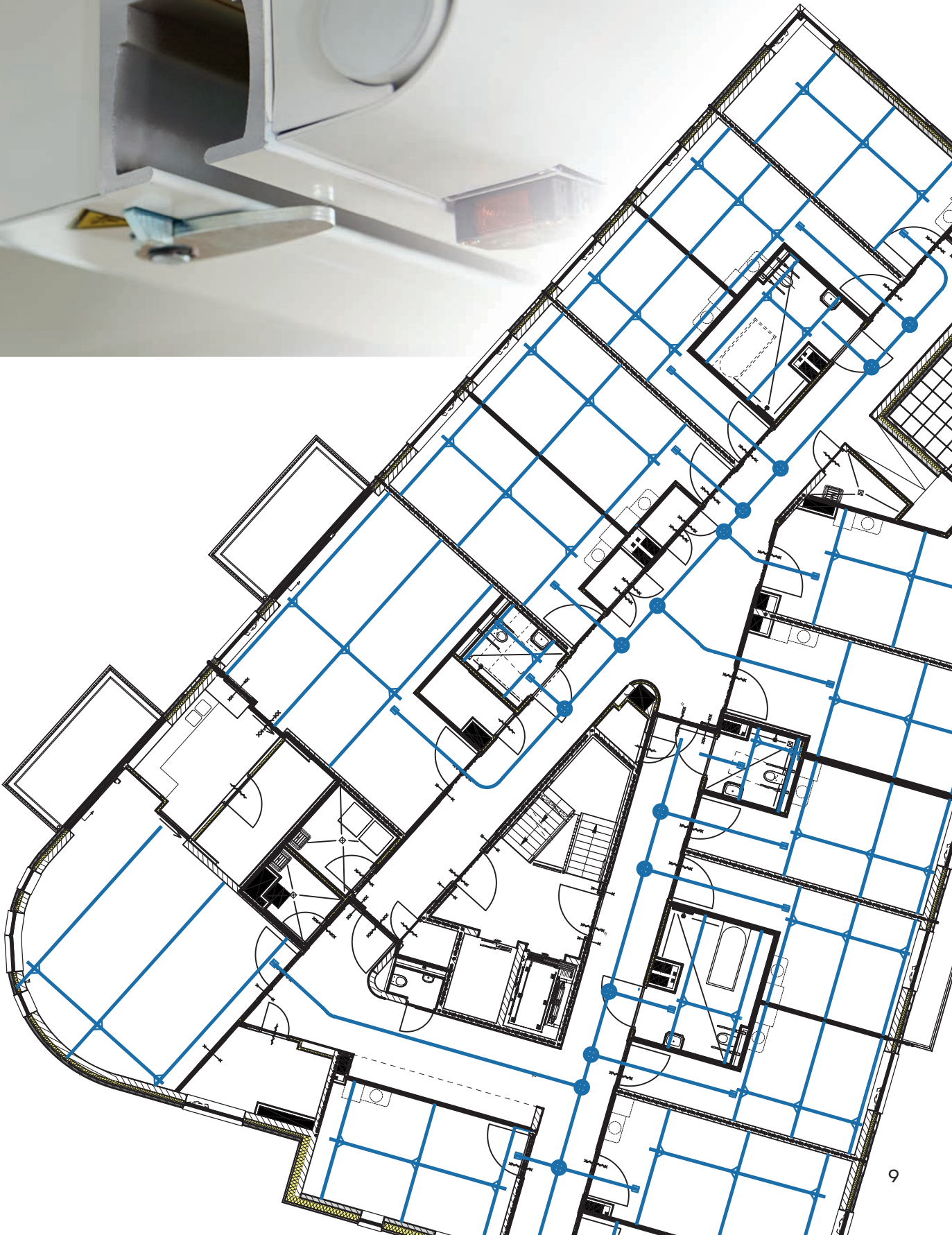
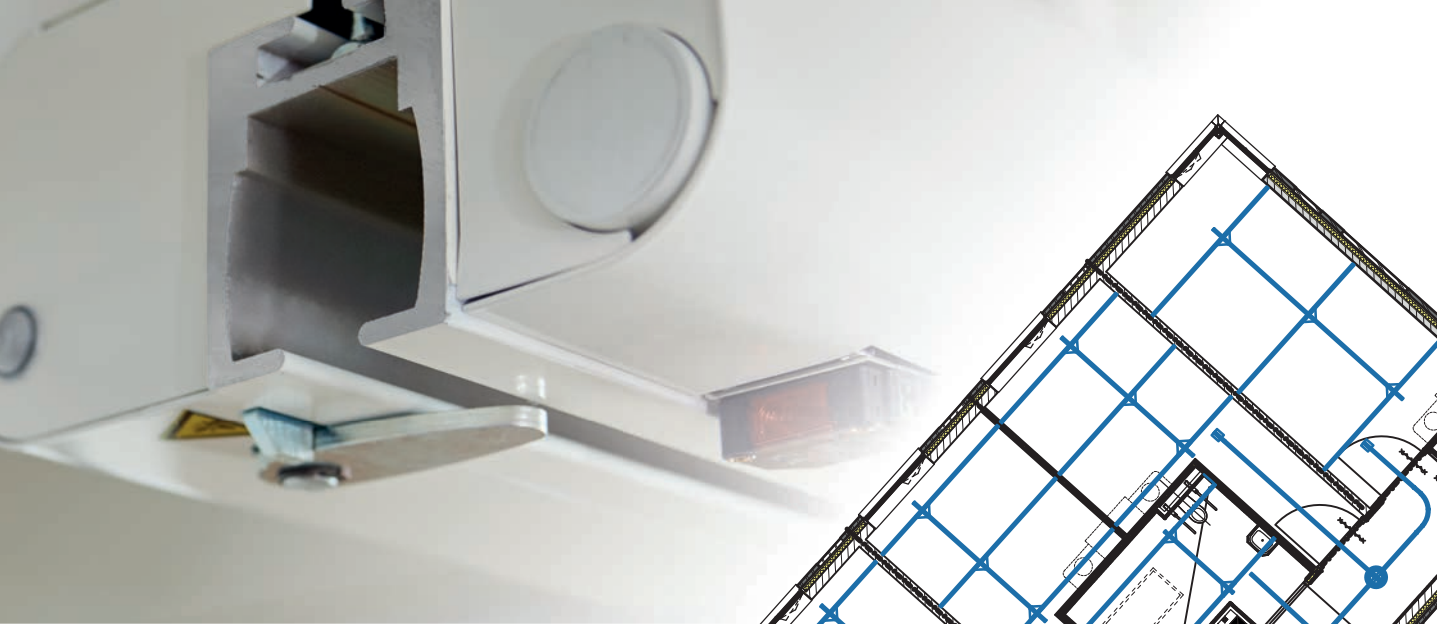
Effortlessly blends into the surroundings.

✔ **Low total cost of ownership through quality components that are built to last.**

Installation is done by technicians that are expertly trained under PLS supervision.

Our track features an exceptionally small turn radius of 480mm that combines perfectly with our smooth steering trolley. Our track can span big distances to provide a system that can fit in almost any building.





PLS Ceiling Hoists

We offer a wide range of ceiling hoists to suit your needs. Clever features and whisper quiet operation make them a joy to use.

All our hoists feature:

- ✓ **A double steering trolley**
Allows smooth and silent movement through even the tightest of turns.
- ✓ **A battery protection system**
Makes sure the battery never drains to a point where it will compromise battery longevity.
- ✓ **Auto standby**
The hoist automatically switches to a standby mode when not in use. There is no power consumption when in standby mode.
- ✓ **Slow start and stop**
For optimal lifting comfort.
- ✓ **LED indicator**
Clearly shows charging status and power modes.
- ✓ **Easy connectivity**
Comes with a connection for an optional electric spreader bar.
- ✓ **Overload alarm**
Sounds an alarm when there is too much weight being lifted.



AR-200P
a portable power-house

A solution for every situation

The striking sleek and modern design gives off a flair of premium elegance to your ceiling. The crisp white color scheme effortlessly blends in with its surroundings. Our hoists can take on maximum weights of 200 kg (440 lbs) up to an impressive 500 kg (1100 lbs). All models work together with our unique sensor-motion technology and come equipped with an emergency stop and lowering cord.

Optional features include a driven variant that make the ceiling hoist move through the rail with the push of a button. This removes the need for manually pushing the spreader bar during a transfer. The driven variants are equipped with a dedicated hand control. The AR-200 is also available in a detachable version that makes service and maintenance easier.



A new player in the field

With the AR-200P a new chapter in patient transfers starts. A compact and light mobile device that functions simultaneously as a hoist and a spreader bar through cleverly designed fold out hooks. Simply pick up the hoist by its handle and take it to the room where it is needed. Use the stick to latch the hook onto the trolley in the rail, fasten the sling and the hoist is ready to go. A dedicated wireless hand control or the control buttons on the hoist itself makes operating a breeze.

The versatility of our Hand Control

Our hoists are charged by placing the hand control on the wall charger. A wide range of different models that have only the buttons that are applicable to the specific ceiling hoist prevent operator confusion.

- ✓ **Easy to use**
Large, easy to understand and easy to press buttons with an ergonomic design that fits your hand.
- ✓ **Charging indication LED**
Shows the charging status.
- ✓ **Snaps into place.**
Magnets and a tapered shape make misplacing the hand control in the wall charger virtually impossible.
- ✓ **Contamination control**
Easy to clean with a range of cleaning products and a ridge-less design that prevents collection of dirt. Thanks to the sturdy build quality, the Hand Control is IP66 rated. This means it's waterproof and dustproof.



PLS Hoist Accessories

To go along with the PLS Ceiling Hoist you can choose from a broad range of accessories to tailor a hoisting system that meets your needs.

Every ceiling hoist comes equipped to match up with our PLS Central Suspension Point. Our design team has come up with a connection that is both easy to connect and remove as well as provide optimal safety.

The Central Suspension Point allows you optimal flexibility in putting together a lifting system.



Scale

For accurate weight measurements you can combine all spreader bars with the fully certified and free swiveling medical scale.

Capacity:
0-300 kg (660 lbs).
Capacity HD version:
0-400 kg (880 lbs).

Available with the quick release connection



Every situation covered

We offer a number of different spreader bars that can accommodate all sorts of situations. The 2-point spreader bar is the most popular of the range. Elegantly designed with all rounded surfaces that, together with its low weight, prevent injury. Easy to clean and with arms that are covered in a soft material that offers good grip for optimal control in handling the patient during transfers.



For children we have a special model that suits their size. This enables the sling to more effectively cradle around the child making for a safer transfer in pediatric care environments.

For bariatric care environments the 4-Point Cross Spreader Bar allows for more patient comfort. The 2 additional points for connecting the sling loops makes for a more even spread of the sling. The arms of this spreader bar are longer, giving a patient more space inside the suspended sling. Furthermore the 4-point Spreader bar can handle more weight with a maximum working load of 500 kg (1100 lbs).

Total control in positioning is offered by the 4 point spreader bars combined with clip fixing slings. The basic model allows to manually move someone from a laying to a seated position or vice versa with the help of a handle. It's wide design ensures plenty free space around the patient.

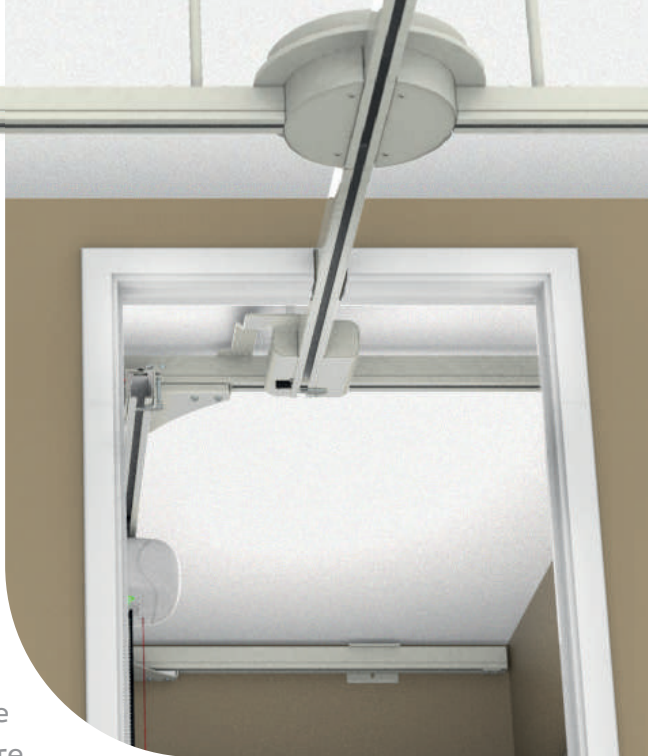
For a truly effortless experience we offer motorized electrical 4 point spreader bars. Controlled by the hand control of the hoist the positioning of a patient is at the tip of a button. An excellent choice for hospitals and other high demanding care environments.



PLS Rail-Components

Our excellent Rail Components link up separate rails into a complete rail system.

Bedroom to bathroom or even building covering. The possibilities are endless. Clever design keeps the interruptions in rails limited to minimal gaps. Our parts and methods means perfect alignment of the rails can be achieved with every installation. The resulting smooth transitions not only make the patient feel comfortable and secure, but also ensure reliability and prevent strain and frustration for the caregiver. Optimal ease of use is accomplished by our renowned Sensor-Motion technology. Instead of wall switches or rail contacts, smart sensors detect the hoist and activate a motion to change direction or connect segments of track. This provides more attention for the patient, as caregivers no longer need to divert attention to wall switches. Safety is reflected in our proven track record and the extensive feature lists below.



PLS Coupling

The PLS Coupling temporarily locks a traverse rail of an XY system to a fixed track, enabling the hoist unit to leave the XY system and enter other rooms.

- ✓ Fully automatic and electronic action with Sensor-Motion Technology
- ✓ Fast response time; 1 second to operate
- ✓ Double locking mechanism
- ✓ Triple redundant safety system; retracting connector, spring and magnet
- ✓ Passive safety design ensures protection even when power is cut
- ✓ Sensors detect hoist and prevent it from getting stuck
- ✓ Safety Lock eliminates the possibility of hoist exiting uncoupled rail



PLS Turntable

The PLS Turntable is used for rail crossings and turning onto another track.

- ✓ Fully automatic and electronic action with Sensor-Motion Technology
- ✓ A short 1 second response time
- ✓ Strong side covers eliminate the possibility of hoist exiting open rail





PLS Track Switch



The Track Switch provides an exit in a straight track, allowing the user a choice of a left or right turn. The other way around a track switch allows the user to go from two different tracks into one.

- ✓ Fully automatic and electronic action with Sensor-Motion Technology
- ✓ A short 1 second response time
- ✓ Bump stops eliminate the possibility of hoist exiting open rail

PLS Rail Profiles, Curves & Trolleys

With the PLS Rail Profiles, the smoothest and most comfortable hoist tracking systems can be created. The four main profiles, combined with the newest technologies, make the hoist glide smoothly from one place to the next.

PLS Rail Profiles

In order to bridge every and any gap we've created four main profiles. Our A-profile, the backbone of the PLS hoist track, is our most versatile profile. This track is also available in various curves. Other options include an embeddable profile and 2 stronger profiles capable of heavier loads and bridging larger gaps. With the standard colour being RAL 9010, all tracks can be optionally painted in any other RAL colour desired.



PLS Profile Curves

With the PLS rail system, complete routes can be installed for the ceiling hoist for disabled patient handling, regardless of the location and the distances to be covered.



Whether it involves a monorail, a single XY system or a system for a complete floor, with the PLS rail system you can reach every corner of every room. Curved railparts are available in 15, 30, 45, 60 and 90 degree turns allowing you optimal placing flexibility. with a bending radius of 480mm it is a perfect fit for every situation.

Wall mounted track systems

The Wall Mounted Track system enables a system that doesn't require fixings to the ceiling. Its clever design has built in flexibility to allow for situations where the walls are not exactly parallel.

The underside can function as a picture hanging system or can alternatively be fitted with ambient LED lighting.



Gantry System

The gantry system is a free standing rail system. Easy to put up and take down. This makes the system ideal for situations where patient transfers are needed for a limited period of time. The system doesn't require any wall or ceiling fixtures and the four floor standing posts take up minimal floor space. The height of the system can be adjusted at initial set-up and the bottom of the posts provide the means to make the system perfectly level even on uneven floor surfaces.

The gantry system provides most of the same benefits as an XY system, providing unparalleled flexibility it enables a caregiver to lift a patient from anywhere within the area of the four posts. Maximum dimensions are 4x4 meters for a maximum weight of 275 kg (600 lbs) or 3,5x3,5 meter for 350 kg (770 lbs), but both length and width can be cut down to the required size.





On Track Charger

For situations where a Wall Charger or Charging Station is not suitable, the Railcharger is an excellent alternative. Discreetly installed inside and partly under the rail it offers the option of charging the ceiling hoist at the end of the rail. This feature is available for the AR-200, AR-275 and AR-350. A separate version of the On Track Charger is also available for the Detachable AR-200.

Fitted with pogopins, these spring loaded contacts paired with a strong magnet provide a very reliable connection to the trolley of the Ceiling Hoist. Combined with a visual cue of the green flashing LED this offers peace of mind. You can count on the hoist being fully charged when it is needed for its next transfer.





XY system

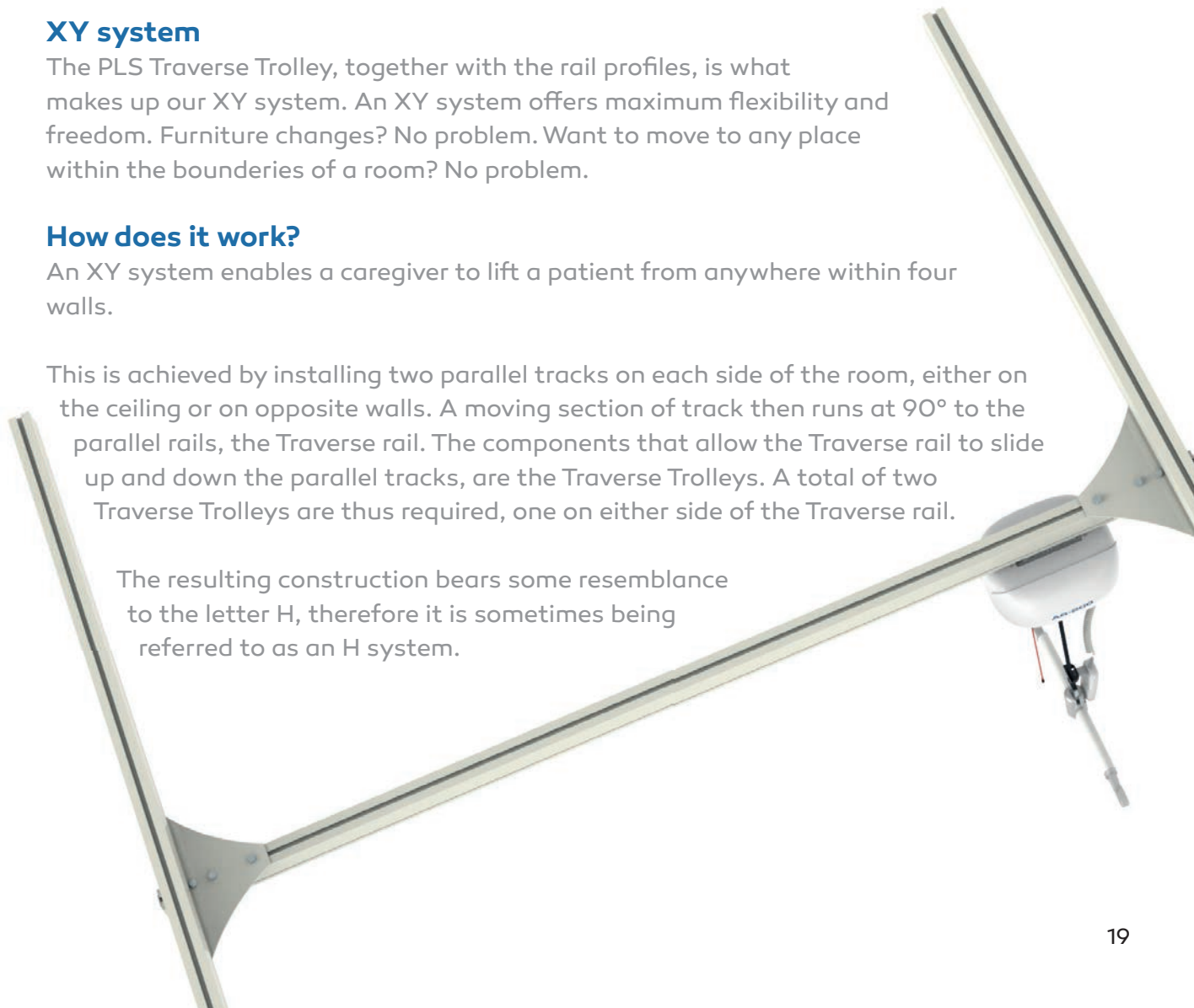
The PLS Traverse Trolley, together with the rail profiles, is what makes up our XY system. An XY system offers maximum flexibility and freedom. Furniture changes? No problem. Want to move to any place within the boundaries of a room? No problem.

How does it work?

An XY system enables a caregiver to lift a patient from anywhere within four walls.

This is achieved by installing two parallel tracks on each side of the room, either on the ceiling or on opposite walls. A moving section of track then runs at 90° to the parallel rails, the Traverse rail. The components that allow the Traverse rail to slide up and down the parallel tracks, are the Traverse Trolleys. A total of two Traverse Trolleys are thus required, one on either side of the Traverse rail.

The resulting construction bears some resemblance to the letter H, therefore it is sometimes being referred to as an H system.



PLS Ceiling Hoist Information

AR-200P (2010P)

Capacity (swl)	200 kg (440 lbs)
Dimensions	330 x 200 x 206 mm (folded) 560 x 200 x 206 mm (unfolded)
Weight	6 kg
Power	LifePo4 25,6V, 1,1Ah
Lifting Tape	25 x 2400 mm
Lifting speed	26 mm/sec
Lifts @ 70cm (full charge)	>58 @ 80 kg,
Charging time	1 Hour
Unique features	Advanced battery protection system Auto stand-by No power consumption in stand-by Easy to carry Overload alarm

AR-200 (2010)

Capacity (swl)	200 kg (440 lbs)
Dimensions	306 x 270 x 148 mm
Weight	10 kg
Power	Lead-Acid 24V, 2,9Ah
Lifting Tape	35 x 2400 mm
Lifting speed	35-70 mm/sec
Lifts @ 70cm (full charge)	>40 @ 120 kg, >75 @ 80 kg
Charging time	8 Hours
Unique features	Advanced battery protection system Auto stand-by No power consumption in stand-by Overload alarm

Also available:
✓ Detachable

AR-200D (2020)



AR-275 (2027)

Capacity (swl) ————— 275 kg (600 lbs)
Dimensions ————— 306 x 270 x 148 mm
Weight ————— 14,7 kg
Power ————— Lead-Acid 24V, 5Ah
Lifting Tape ————— 50 x 2400 mm
Lifting speed ————— 35-70 mm/sec

Lifts @ 70cm ————— >50 @ 275 kg,
(full charge) >80 @ 200 kg
Charging time ————— 8 Hours
Unique features ———— Advanced battery protection system
Auto stand-by
No power consumption in stand-by
Overload alarm

AR-350 (2035)

Capacity (swl) ————— 350 kg (770 lbs)
Dimensions ————— 306 x 270 x 148 mm
Weight ————— 15,7 kg
Power ————— Lead-Acid 24V, 5Ah
Lifting Tape ————— 50 x 2400 mm
Lifting speed ————— 35-70 mm/sec

Lifts @ 70cm ————— >35 @ 350 kg,
(full charge) >80 @ 200 kg
Charging time ————— 8 Hours
Unique features ———— Advanced battery protection system
Auto stand-by
No power consumption in stand-by
Overload alarm

AR-500 (2050)

Capacity (swl) ————— 500 kg (1100 lbs)
Dimensions ————— 496 x 340 x 275 mm
Weight ————— 26,7 kg
Power ————— Lead-Acid 24V, 5Ah
Lifting Tape ————— 50 x 2400 mm
Lifting speed ————— 35-70 mm/sec

Lifts @ 70cm ————— >30 @ 500 kg
(full charge)
Charging time ————— 8 Hours
Unique features ———— Advanced battery protection system
Auto stand-by
No power consumption in stand-by
Overload alarm



PLS Ceiling Hoist Information

AR-200DR (2010DR)

Capacity (swl)	200 kg (440 lbs)
Dimensions	306 x 270 x 295 mm
Weight	12 kg
Power	Lead-Acid 24V, 2.9Ah
Lifting Tape	35 x 2400 mm
Lifting speed	35-70 mm/sec
Lifts @ 70cm (full charge)	>40 @ 120 kg, >75 @ 80 kg
Charging time	8 Hours
Unique features	Advanced battery protection system Auto stand-by No power consumption in stand-by Quiet driving (35dB at full speed) Overload alarm

AR-275DR (2027DR)

Capacity (swl)	275 kg (600 lbs)
Dimensions	306 x 270 x 204 mm
Weight	16,7 kg
Power	Lead-Acid 24V, 5Ah
Lifting Tape	50 x 2400 mm
Lifting speed	35-70 mm/sec
Lifts @ 70cm (full charge)	>50 @ 275 kg, >80 @ 200 kg
Charging time	8 Hours
Unique features	Advanced battery protection system Auto stand-by No power consumption in stand-by Quiet driving (35dB at full speed) Overload alarm



Freewheel feature

The freewheel on the driven trolley allows you to quickly move the hoist by hand to where it is needed.



PLS Hoist Accessories

2-Point Spreader Bar (8102)

The standard 2-Point Spreader Bar, simple and easy to use with loop-fixing slings. The Spreader Bar features a quick release connection

Capacity (swl) 275 kg (600 lbs)

Also available:

✓ **Pediatric size (8102P)**

4-Point Spreader Bar (8103)

The 4-Point Spreader Bar, simple and easy to use with loop -fixing slings . The model has a quick couple and release option, suitable to the PLS Central Suspension Point.

Capacity (swl) 500 kg (1100 lbs)

Also available:

✓ **Pediatric size (8103P)**

4-Point Electric Spreader Bar (8105, 8107)

The 4 point Electric Spreader Bar comes in a wide and high design, with lots of space for the patient. Controlled by the hoist's handset, the electric movement is smooth and comfortable for the patient.

Capacity 8105 @ 275 kg (600 lbs)
 8107 @ 350 kg (770 lbs)

Also available:

✓ **Manual version (8104)**

✓ **Low version (8109)**

Wall-Charger (5264, 5265)

Input Voltage 90-264 V/AC
Maximal Output Voltage +29,4 V/DC
Maximal Output Current 0,5 A
IP-rating (when installed) IP-52

Also available:

✓ **Charging Station (5267)**

✓ **On Track Charger (5263)**

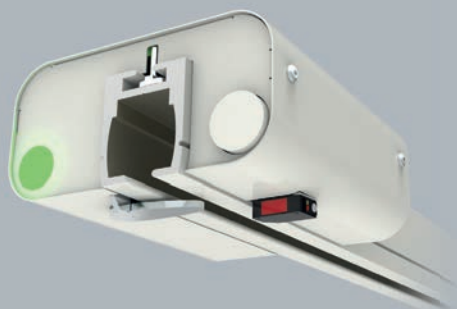


PLS Component Information

Coupling (1025)



Usage	Connects traverse rail XY to fixed rail system
Connecting rail	A-Profile and B-Profile
WLL	500 kg (1100 lbs)
Operation	Sensor-activated
Weight	4,7 kg
Material	Aluminium and galvanised steel, standard powder-coated in RAL 9010
Accessories	Safety-lock (1032)
Electrical specs	
Power supply	24 VDC



Turntable (1001 3-way, 1002 4-way)



Usage	In crossing of standard railprofile.
Available in	3- or 4-way version, Heavy Duty
Connecting rail	A-Profile and B-Profile
WLL	275 kg (600 lbs)
Operation	Sensor-activated
Weight	9,2 kg
Material	Aluminium and galvanised steel, standard powder-coated in RAL 9010
Electrical specs	
Power supply	24 VDC

Also available:

✓ HD 3-way (350 kg / 660 lbs) (1001-HD)

✓ HD 4-way (350 kg / 660 lbs) (1002-HD)



Track Switch (1003 Left, 1004 Right)



Usage	As exit in corridor.
Available in	left or right version
Connecting rail	A-Profile and B-Profile
WLL	275 kg (600 lbs)
Operation	Sensor-activated
Weight	8,2 kg
Material	Aluminium, standard powder-coated in RAL 9010
Electrical specs	
Power supply	24 VDC

Use PLS Components only in combination with a PLS approved power supply.

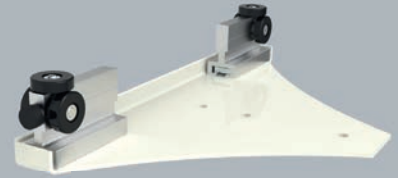
Activation by PLS Sensor-Motion technology.



Traverse Trolleys

Traverse Trolley (1010)

Suitable for A profile.



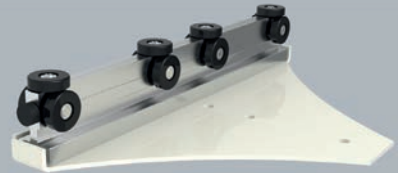
Traverse Trolley HD (1012)

Suitable for C profile and heavy loads.



Traverse Trolley EHD (1135)

Suitable for D-Profile and heavy loads.



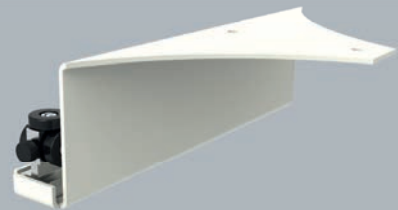
65 mm high Traverse Trolley (1011)

Suitable for A profile, for recessed fitting of an x-axis rail in between the two y-axis rails that make up an XY system.



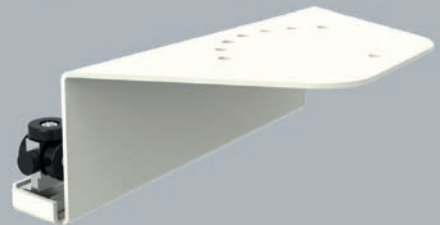
120 mm high Traverse Trolley (1120)

Suitable for C profile, for recessed fitting of an x-axis rail in between the two y-axis rails that make up an XY system.



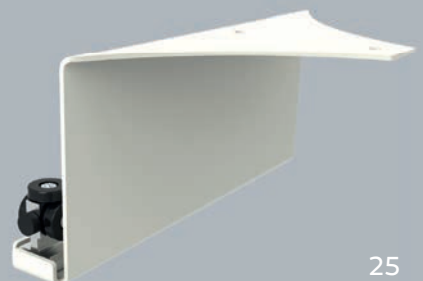
120 mm high Z-Traverse Trolley (1120Z)

Suitable for C profile, for recessed fitting of an x-axis rail in between the two y-axis rails that make up an XY system. In this case the rail profile can be angled diagonally at certain intervals, the maximum being 45 degrees.



180 mm high Traverse Trolley (1180)

Suitable for D profile, for recessed fitting of an x-axis rail in between the two y-axis rails that make up an XY system.



PLS Rail-fixings Catalog



T-mount 6001
Standard bracket for fixing track onto ceiling by using a threaded rod.



Doorway Bracket 6013
For stabilizing the A-Profile in a doorway.



Wall Bracket 6003
For fixing the A-Profile onto a wall, up to 45° angle.



Spacer Tube 6014
40x60mm. For creating extra space between the traverse trolley and traverse rail.



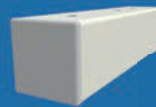
Wall Bracket Heavy Duty 6005
For fixing C-Profile onto a wall, up to a 60° angle.



Spacer Tube 6016
50x60mm. For creating extra space between the traverse trolley and traverse rail.



Wall Bracket EHD 6017
For fixing C-Profile onto a wall, up to a 60° angle.



Spacer Tube 6015
60x60mm. For creating extra space between the traverse trolley and traverse rail.



Lateral Bracket 6102
For fixing a lateral rail for stabilisation of a traverse rail onto the wall.



Connector Top Rail 6024
For fixing rail-profiles together.



Beam Bracket 6006
For fixing a track onto the side of a wooden or metal beam.



Connector Traverse Rails 6025
For fixing traverse-profiles together.



Cross Bracing Bracket 6029
Bracket for cross bracing, used in pairs.



Fixing Strip Traverse Trolley 6026
For fixing traverse rail and trolley together.



V-Mount 6007
Bracket for fixing track by using a threaded rod onto the underside of a wooden beam or ceiling.



Connector In Rail Long Version 6027
Longer version of 6002.



Parallel Bracket 6008
For parallel wall-fixing of the track.



Fixing Strip Traverse Trolley 65+120 6028
Shorter version of 6026.



Bridge Curtain rail
Single 6010
 Compatibility:
 PLS A-Profile.



Stabilizer
D-Profile 6114
 For stabilizing the traverse
 parallel rail against the fixed
 rail.



Bridge Curtain rail
Double 6011
 Compatibility:
 PLS A-Profile.



Stabilizer For Insert
Ceiling D-Profile 6115
 For stabilizing the traverse
 parallel rail against the fixed
 rail.



Stabilizer
A-Profile 6109
 For stabilizing the traverse
 parallel rail against the fixed
 rail.



U-profile 1041
 Reinforcement for the XY
 Gantry-system. Available in
 1500, 2000 and 2500mm
 length.



Stabilizer For Insert
Ceiling A-Profile 6110
 For stabilizing the traverse
 parallel B-Profile rail against
 the fixed rail.



Critical End Stop 1130
 Adds an End Stop to the
 Rail-Profile to keep the hoist
 in the track.



Stabilizer
C-Profile 6111
 For stabilizing the traverse
 parallel rail against the fixed
 rail.



End Cover
A-profile 1043
 A cap to cover the A-profile
 rail.



Stabilizer For Insert
Ceiling C-Profile 6112
 For stabilizing the traverse
 parallel rail against the fixed
 rail.



End Cover
C/D-profile 1044-47
 A cap to cover the D-profile
 rail. Can be snapped apart to
 fit on a C-profile.



Wall Post 6100
 Distributes the weight to
 the floor. Comes in a pair.

! Weight tests are always
 required after installation
 in accordance with the
 Hoisting specifications and
 regulations.



Keep your cool

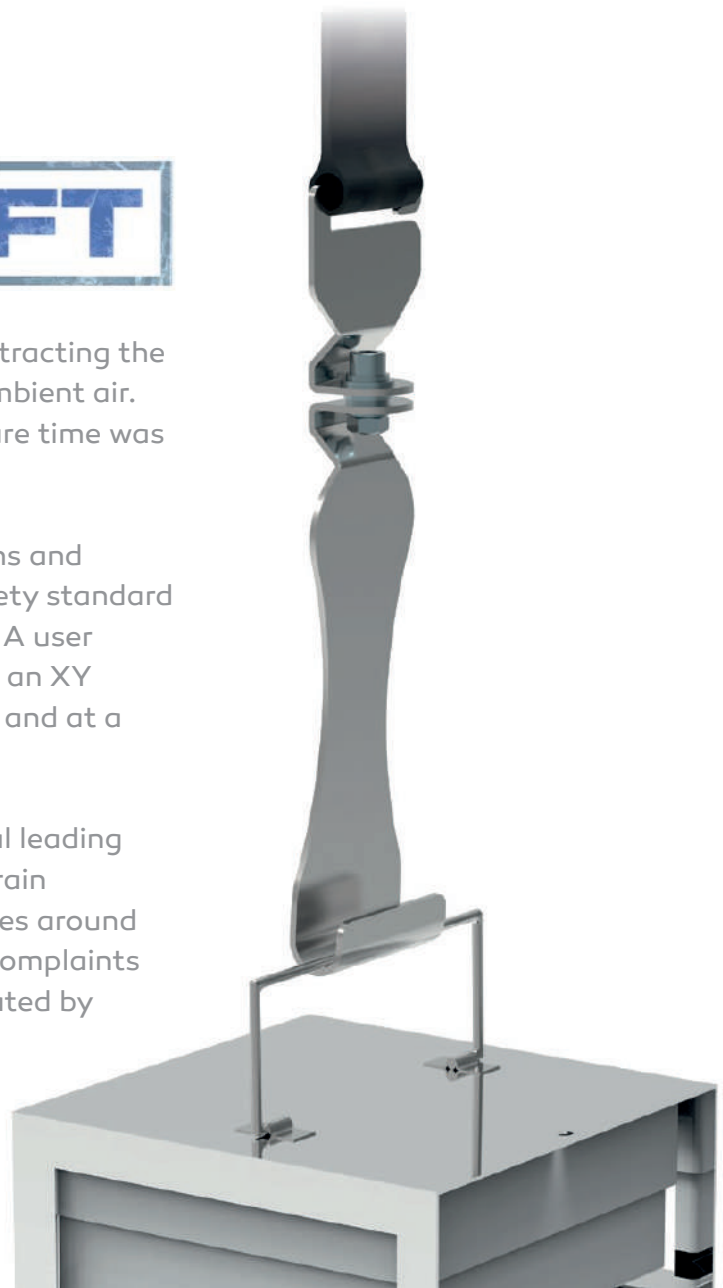
For cryogenic laboratory environments it is of critical importance to keep samples stable. Time and temperature are vital parameters during the process of accessing them. For this the team at PLS developed Cryo-Lift.

CRYO-LIFT

Cryo-Lift ensures a fast and safe way of extracting the product and reduces sample exposure to ambient air. An additional way of shortening the exposure time was found in the optional Clip-Racks.

Cryo-Lift vastly improves working conditions and safety. PLS proudly introduced the new safety standard in every cryo storage working environment. A user friendly control system in combination with an XY motion that ensures lifting samples exactly and at a right-angle wherever needed.

Cryo-Lift has already proven itself in several leading research institutes to prevent Repetitive Strain Injury. Also other frequently diagnosed issues around manually handling Cryo Racks like CANS (Complaints of Arm, Neck and/or Shoulder) were eliminated by Cryo-Lift.



Simple. Respectful.

Up to now there was no good solution to pick up a deceased person, lift them up, gently transfer them from their place and lower them in a coffin. Our technical team thought of a solution and came up with a revolutionary device, named The BodyHoist.



People working in funeral homes and morgues know that what they do has special meaning. However there are still practical limitations that can pose health risks to those that work in this industry. A human body is a heavy thing to lift and doing this in a controlled and respectful manner is even harder to do. In this day and age where people work longer careers it is especially important to prevent unnecessary strain and injury.

This is why the team at PLS has developed the BodyHoist to assist in transporting the deceased during the work process. The BodyHoist not only makes it very easy to place a corpse into a coffin, it also gets hold of a body even when it is already in a coffin and has to be taken out. Using the body hoist is not only very easy, but also very respectful. It takes only one person where normally two or more were required.



Body Hoist

Technical specifications

Maximum adjustment

- Shoulder width: 600 mm
- Ankle width: 350 mm

Adjustable balance point

Safe working load: 275 kg (600 lbs)*

* In combination with the PLS AR-275 Hoist unit.



Phone +31 318 576 668
E-mail info@plsbv.com
Website www.plsbv.com



Patient Lifting Solutions bv
Arkeneel 27
3905 NS Veenendaal
The Netherlands